
STATE OF ALASKA • COMMERCIAL FISHERIES ENTRY COMMISSION

1997 ANNUAL REPORT

Dear Governor, Legislators, and Fellow Alaskans:

Pursuant to AS 16.43.980, we are pleased to submit the Commercial Fisheries Entry Commission's 1997 Annual Report. 1997 is the 25th anniversary of the amendment to the Alaska's constitution authorizing the creation of a system of limited fishery.

During 1997, the Commission limited three additional fisheries, proposed point systems for six recently limited fisheries, issued 42,652 licenses, ruled upon 1,985 transfer requests, and issued 266 adjudicatory decisions. At various stages of adjudication, 597 cases were before the Commission as of the end of 1997. As in the past, the Commission generated twice the cost of its operating budget from license fees it collected and paid into the state General Fund.

Fishers have petitioned the Commission to limit an additional 21 fisheries. The Commission is reviewing these petitions and will develop proposals for public comment as required by the Limited Entry Act.

These are difficult economic times for many fishers, and the Commission continues to help fishers protect their fishing privileges. We work closely with the Division of Investments, Department of Commerce; the Commercial Fishing and Agriculture Bank, the Alaska Business Development Center, the Child Support Enforcement Division and the Internal Revenue Service.

The Commission continues to work with the Legislature and Administration on various fisheries issues including a bill to provide the Commission with authority to establish a temporary moratorium in a fishery when required to promote the conservation and sustained yield management and the economic health and stability of a fishery.

We renew our commitment to employ the Limited Entry Act for resource conservation and for prevention of economic distress among fishers and those dependent upon them for a livelihood.

Sincerely,
COMMERCIAL FISHERIES ENTRY COMMISSION
Marlene Johnson, Commissioner
Mary McDowell, Commissioner
Bruce Twomley, Chairman

by: _____

EEOC/ADA COMPLIANCE STATEMENT

CFEC is administratively attached to the Alaska Department of Fish and Game.

The Alaska Department of Fish and Game administers all programs and activities free from discrimination on the basis of sex, color, race, religion, national origin, age, marital status, pregnancy, parenthood, or disability. For information on alternative formats available for this and other department publications, contact the department ADA Coordinator at (voice) 907-465-6173, or (TDD/TDY) 907-465-3646 or 1-800-478-3648, or (fax) 907-465-2440. Any person who believes she or he has been discriminated against should write to:

ADF&G
P.O. Box 25526
Juneau, AK 99802-5526

O.E.O.
U.S. Department of Interior
Washington, D.C. 20240

COMMERCIAL FISHERIES ENTRY COMMISSION



**State of Alaska
Governor**

Tony Knowles

Commission

Marlene Johnson, Commissioner
Mary McDowell, Commissioner
Bruce Twomley, Chairman

Adjudications

Frank Glass, Project Leader

Data Processing

Roger Kolden, Project Leader

Licensing

Karen Wells, Project Leader
(Christine Kelly held this
position in 1997)

Research

Kurt Schelle, Project Leader

1997 Annual Report

Design and Layout

Sandra Thomas, Publication Specialist

Cover Art

Dale Anderson

Office Location

Commercial Fisheries Entry
Commission (CFEC)
Jordan Creek Center
8800 Glacier Highway, #109
Juneau, Alaska

Mailing Address

CFEC
8800 Glacier Highway, #109
Juneau, AK 99801

Telephone

(907)790-6900
(907)789-6160
(907)789-6150

Fax

(907)789-6170

World-wide Web Server

WWW.CFEC.STATE.AK.US

**Bulletin Board System
Internet Address**

(907)789-6180
BBS.CFEC.STATE.AK.US



Photo courtesy Frank See, Sr.

TABLE OF CONTENTS

| | |
|--|-----------|
| INTRODUCTION | 1 |
| Organization by Agency Function | 4 |
| DECISIONS AND ACTIVITIES | 5 |
| Limitation of Three Fisheries | 5 |
| Point System Proposals and Application Periods | 7 |
| Help for Fishers in Financial Crisis | 9 |
| Other Actions | 11 |
| ADJUDICATIONS | 13 |
| Overview | 13 |
| Administrative Proceedings and Decisions | 14 |
| Judicial Rulings and Appeals | 15 |
| LICENSING | 17 |
| Overview | 17 |
| New Developments | 20 |
| Permit Transfers | 22 |
| Permanent Transfers | 22 |
| Emergency Transfers | 23 |
| Vessel License Fee Categories | 24 |
| Field Office Operations | 26 |
| RESEARCH | 27 |
| Overview | 27 |
| New Limitations | 27 |
| Optimum Numbers and Fleet Reductions | 28 |
| Research On Individual Fishing Quota Programs | 29 |
| Other Projects and Reports | 30 |
| REVENUE | 33 |
| CFEC Budget - General Fund | 33 |
| Revenue Generated by CFEC | 34 |
| APPENDICES | 35 |



Photo courtesy Frank See, Sr.

INTRODUCTION

➤ The commercial fishing industry is a major component of Alaska's statewide economy and the economic backbone of Alaska's fishing communities. Alaska's seafood industry is the state's largest source of private sector jobs. The Commercial Fisheries Entry Commission (Commission) plays an essential management role in developing and sustaining Alaska's billion dollar fishing industry.

In 1972 Alaskans voted to amend Article 8, Section 15, of Alaska's constitution to allow limited entry into commercial fisheries. With this new authority, the Alaska Legislature approved the Limited Entry Act in 1973. The Act created the limited entry program and established the Alaska Commercial Fisheries Entry Commission as an exempt, independent, quasi-judicial agency to carry out the mandate of the people and Legislature.

The Commission was given the statutory responsibility to promote the conservation and sustained yield management of Alaska's fishery resources and the economic health and stability of the fishing industry by regulating entry into the state's commercial fisheries.

To meet these responsibilities, the Commission is organized into four sections: Adjudications, Research, Licensing and Data Processing (see the chart: "Organization by Agency Function," page 4). The Commission engages in the following activities mandated by law (AS 16.43):

- Establishes maximum numbers of entry permits for fisheries to be limited and implements application processes and point systems to rank eligible applicants;
- Processes entry permit applications and adjudicates claims not resolved in initial classification;

The Commercial Fisheries Entry Commission plays an essential management role in developing and sustaining Alaska's billion dollar fishing industry.

- Issues permits in limited and unlimited fisheries, and issues licenses for all vessels as required to legally participate in the State's fisheries;
- Processes requests for emergency and permanent transfers of entry and interim-use permits and compiles data of all such transfers;
- Enforces provisions of the Limited Entry Act by regulating permit transfer activities;
- Participates in the research and development of comprehensive fisheries economic data; and
- Works with other state and federal management agencies to develop and coordinate fisheries policies.

Since 1973, the Commission has granted more than 13,500 limited entry permits as the result of limiting entry in 60 different fisheries. The Commission has received petitions for the limitation of twenty-one (21) additional fisheries.

The percentage of permits held by Alaska residents has remained relatively stable.

The percentage of permits held by Alaska residents has remained relatively stable. Today approximately 77% (more than 10,000) of all permits are held by Alaskans and more than half of that number are held by rural Alaskans.

The Commission issues nearly 43,000 permanent permits, interim-use permits, and vessel licenses each year, completes 2,000 permit transfers per year and collects and contributes between \$5.0 and \$5.6 million in revenue annually to the state's General Fund. The Commission's operating budget is only half of the revenues collected.

The drastic declines in salmon prices over the past several years and disastrous 1997 salmon fishing season in Bristol Bay and the Kuskokwim River basin have imposed hardships on many

Alaska fishing families. In addition, the Commission is concerned with the efforts by the Internal Revenue Service (IRS) to force the sale of entry permits of local fishers. Together with the Division of Investments, the Commission has helped fishers take advantage of the Tax Obligation Loan Program as a means for fishers to settle their federal tax obligations and protect their fishing privileges. The Commission and others including State and Federal agencies have been meeting with the IRS to attempt to avoid the loss of entry fishing privileges.

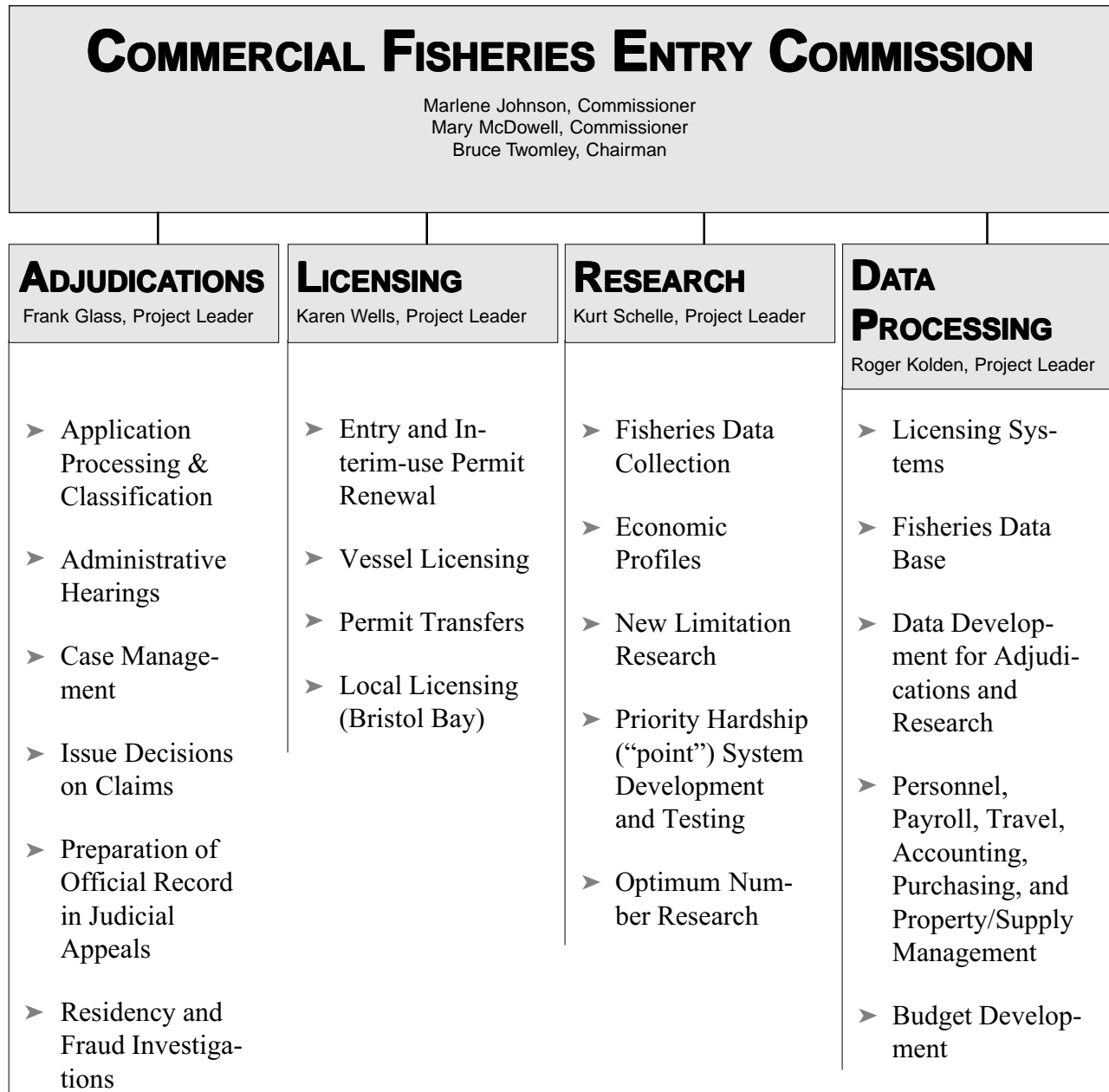
In addition to responding to these current and pressing issues, the Commission has continued to perform its primary functions of licensing fishers, adjudicating claims, performing critical research and providing data to people and agencies as needed to make the proper policy decisions. Major decisions and activities affecting the Commission's operations in 1997 are outlined in this report. Prior years' activities, events, and decisions that affected the Commission's operations are highlighted in the appendices.

Commissioner Dale Anderson's term expired in 1997 after four years of service on the Commission. Governor Tony Knowles appointed Mary McDowell to the Commission to replace Mr. Anderson. Mary is an experienced manager and brings a wealth of knowledge of the fishing industry to the Commission.

Alaska's fishing industry is vital to Alaska's economy and provides an important food source to the world. Alaskans must ensure our fisheries are sustained through sound management and wise commercial development. We at the Commercial Fisheries Entry Commission continue our commitment to fulfill our statutory role in achieving that goal.

Alaska's fishing industry is vital to Alaska's economy and provides an important food source to the world.


ORGANIZATION BY AGENCY FUNCTION



DECISIONS AND ACTIVITIES

OF THE COMMISSION IN 1997

LIMITATION OF THREE FISHERIES

 In 1997, the Commission adopted regulations limiting three additional fisheries. The following is a brief synopsis of these new limitations.

SOUTHEAST SHRIMP BEAM TRAWL FISHERY

The Commission proposed limitation for the Southeast shrimp beam trawl fishery on December 31, 1996. The fishery had experienced a substantial increase in effort around the time the Southeast pot shrimp fishery was in the process of being limited.

Public meetings were held and there was significant testimony supporting the limitation proposal. The public comment period ended on February 14, 1997 and the Commission adopted a maximum number regulation on February 19, 1997. The regulation became effective on May 29, 1997.

SOUTHEAST SHRIMP OTTER TRAWL FISHERY

The Commission proposed limitation for the Southeast shrimp otter trawl fishery on December 31, 1996, at the same time it proposed limitation for the beam trawl fishery. While shrimp otter trawls had traditionally been used sparingly in Southeast Alaska, there had been a recent increase in otter trawl use prior to the proposal. Moreover, many persons had concerns that use of otter trawls would expand substantially if the Commission let the shrimp otter trawl fishery remain open access while limiting access to the beam trawl fishery.

For these reasons, the Commission proposed limitation for both gear types. After the Commission had made these limitation proposals, the Board changed its regulations and removed otter trawls as legal gear for shrimp in Southeast Alaska. This occurred in February of 1997.

The Commission took public testimony on both the otter trawl and beam trawl proposals at hearings held in Southeast fishing communities. Because of the Board action, the Commission subsequently extended the public comment period on the otter trawl limitation proposal to May 30, 1997.

During the extended public comment period, the Commission learned that some fishers would be asking the Board to reconsider its decision to eliminate use of otter trawl gear for shrimp in Southeast Alaska. In addition, ADF&G and beam trawl fishers concerns about the potential growth of an open access otter trawl fishery should the Board reinstate otter trawls as legal gear at any time in the future.

For these reasons, the Commission adopted regulations limiting the Southeast shrimp otter trawl fishery on June 20, 1997. These regulations became effective on August 2, 1997. The Board reconsidered its decision on otter trawls on October 22, 1997 but did not opt to reinstate otter trawls as legal shrimp gear in Southeast Alaska at that time. Should the Board reinstate otter trawl gear at some later date, the fishery will be under limitation.

Should the Board reinstate otter trawl gear at some later date, the fishery will be under limitation.

GOODNEWS BAY ROE HERRING GILL NET FISHERY

The Commission received a petition to limit the Goodnews Bay roe herring gill net fishery in 1996. The fishery had experienced a large increase in effort. The Commission proposed limitation on April 7, 1997 and held public hearings. The public comment period ended on June 3, 1997 and the Commission adopted regulations on June 12, 1997. These regulations became effective on July 26, 1997.

POINT SYSTEM PROPOSALS AND APPLICATION PERIODS

Under AS 16.43, the Commission must develop a hardship ranking system or point system to determine which applicants will receive a limited entry permit in a newly limited fishery. A point system is necessary because the number of eligible applicants typically exceeds the maximum number established at the time of limitation.

Under the law, a point system is to be based upon the two broad concepts of past participation in the fishery and economic dependence on the fishery. The statute asks the Commission to consider a number of different criteria when developing a point system for a fishery.

During 1997, the Commission proposed and adopted point systems and application period regulations in the following recently limited fisheries.

SOUTHEAST ALASKA POT SHRIMP FISHERY

The Commission adopted point system regulations for this fishery on October 2, 1996 and the regulations became effective on December 4, 1996. An application period for permanent entry permits was held from March 15, 1997 through June 15, 1997.

During 1997 the Commission worked to evaluate and classify the applications. The Commission also considered the issue of whether or not to adopt regulations constraining the fishing capacity allowed under each individuals pot shrimp permit to pre-limitation levels.

On December 30, 1997, the Commission decided that the pot shrimp permits should be issued without additional fishing capacity restrictions and that any further gear restrictions in the

Under the law, a point system is to be based upon the two broad concepts of past participation in the fishery and economic dependence on the fishery.

fishery should be left to the Board. The Commission's decision was based upon a number of factors including uncertainty about the possible consequences of the different alternatives for restricting fishing capacity restrictions and uncertainty about the impacts of new Board regulations constraining the size and the number of pots fished.

The Commission will prepare a document explaining their decision not to put fishing capacity restrictions on individual entry permits for the Southeast Alaska pot shrimp fishery. This document should be available to the public in early 1998.

PRINCE WILLIAM SOUND SABLEFISH FISHERIES

The Commission proposed point system regulations for the Prince William Sound sablefish fixed gear, pot gear, and net gear fisheries on January 27, 1997. The public comment period on these three proposals ended on March 5, 1997. The Commission held public meetings and took public testimony during the public comment period.

Based on the public testimony, the Commission made slight modifications to the proposals and adopted final point system regulations on March 12, 1997. The regulations became effective on July 26, 1997. The Commission then held an application period for entry permits in these fisheries that lasted from September 1, 1997 through December 1, 1997. Applications will be evaluated and permanent entry permits will be issued during 1998.

NORTHERN SOUTHEAST AND SOUTHERN SOUTHEAST HERRING SPAWN-ON-KELP POUND FISHERIES

The Commission proposed point system regulations for the Northern Southeast and Southern Southeast herring spawn-on-kelp pound fisheries on February 13, 1997. The public comment period on these two proposals ended on March 26, 1997.

The Commission held public meetings and took public testimony during the public comment period.

The Commission adopted final point system regulations on June 30, 1997. The regulations became effective on September 11, 1997. The Commission then started an application period for entry permits in these fisheries that ran from October 1, 1997 through February 1, 1998. The Commission will begin to classify these applications during 1998.

HELP FOR FISHERS IN FINANCIAL CRISIS

Some salmon run failures in Bristol Bay and Western Alaska coupled with low salmon prices have created serious financial problems for many Alaska fishers. This situation makes even more critical the Commission's efforts to help fishers respond to financial crises and protect their fishing privileges.

In January, the Commission participated in the Governor's Salmon Strategy Forum. The forum brought hundreds of fishers, seafood processors and state and local officials together to develop strategies for improving the position of Alaska's salmon industry in the world marketplace.

During 1997, the Commission provided data to support Governor Knowles' request for Federal disaster relief for the Bristol Bay region. The Commission also continued to work closely with the Division of Investments of the Alaska Department of Commerce, the Commercial Fishing and Agriculture Bank, and the Alaska Business Development Center. Additionally, the Commission continued to work with the Bristol Bay Permit Brokerage. This service was established by the Bristol Bay Economic Development Corporation and the Bristol Bay Native Association to help maintain permits in the hands of residents

Some salmon run failures in Bristol Bay and Western Alaska coupled with low salmon prices have created serious financial problems for many Alaska fishers.

of the region. These collaborations have helped the Commission provide referrals for commercial fishers facing serious financial problems that could ultimately endanger their fishing privileges.

These collaborations have helped the Commission provide referrals for commercial fishers facing serious financial problems that could ultimately endanger their fishing privileges.

The Commission also continued to cooperate with the Federal Internal Revenue Service (IRS) in an effort to help permit holders achieve voluntary federal tax compliance. With support from the IRS, the Commission continued to work with the Division of Investments to seek legislation to extend the Fishers' Tax Obligation Loan Program (within the State's Fisheries Revolving Loan Program). While such legislation was introduced and passed the State House of Representatives during the 1997 session, it died in the Senate Resources Committee, when the Legislature adjourned in the spring of 1997.

The IRS suggested additional measures, which the Commission has undertaken. The IRS recommended the Commission obtain from the Alaska Permanent Fund Division of the Department of Revenue the lists of entry permit holders whose Permanent Fund Dividends have been levied upon by the IRS. According to the IRS, this list would help determine which permit holders are most in danger of IRS enforcement. With that information, the Commission may be able to identify fishers most in need of help, contact them, and offer referrals.

This task has proven difficult, because, like the IRS, the Permanent Fund Dividend Division is constrained by confidentiality laws. However, the Division agreed to modify its regulations to provide the Commission access to the information. Throughout 1997, data processing staffs of both agencies worked together to develop the means to share this information. The Commission is grateful for the support of the Permanent Fund Dividend Division.

Additionally, the Commission was pleased the IRS joined the state in responding to last season's disastrous salmon returns in Bristol Bay and Western Alaska. The IRS has not attempted to force the sale of an entry permit during 1997 (as it did in 1996). However, despite the State's efforts to cooperate, at a meeting in October with a number of fishers and citizens as well as state and federal officials, during an open discussion of fairness to taxpayers, the IRS Regional Director expressed hostility toward the state and spoke of preparing a lawsuit against the State of Alaska. His outburst prompted a written complaint from a Congressional staff member to the Alaska Congressional Delegation.

Although this October incident heightens the Commission's concern about the future, the Commission continues to work with the IRS to help fishers achieve voluntary compliance. The Commission is grateful to the individual Revenue Officers who have diligently worked in cooperation with fishers, particularly those in isolated Alaskan communities. The state hopes the IRS as a whole will recognize these and other continuing cooperative efforts are in the best interests of the public and long-term revenue collection.

*The IRS has not attempted
to force the sale of an entry
permit during 1997*

OTHER ACTIONS

HB141 was passed by the legislature and signed into law. The bill established a four year moratorium on vessels participating in the statewide and Cook Inlet weathervane scallop fisheries.

The Commission continued to work with the Department of Law to defend the state's nonresident permit fee differential.
Carlson v. CFEC.



Photo courtesy Frank See, Sr.

ADJUDICATIONS

OVERVIEW

▶ The primary function of the Commission's Adjudications Section is to evaluate applications for limited entry permits. Entry permit applicants are classified (ranked) in a system that measures each applicant's past participation and economic dependence on the fishery. Entry permits are then issued at successively lower classification levels until the established maximum number of permits has been issued for that fishery.

The Adjudication's Section is staffed by paralegals and hearing officers. The paralegals evaluate entry permit applications and make the initial determinations on accepting, denying and classifying them. Applicants may challenge denials or classifications by requesting a hearing. Commission hearing officers conduct administrative hearings throughout the state and issue decisions based on the record. The Commissioners review and may affirm or modify hearing officers' decisions on their own motion, or upon the request of an affected party.

Hearings may be requested also if the Commission's Licensing Section denies requests for the emergency transfer or the permanent transfer of entry permits. Emergency transfer hearings are held and decided by paralegals. Permanent transfer hearings are held and decided by hearing officers.

Commission hearing officers also preside over hearings arising from enforcement proceedings, where the Commission may impose fines, or revoke or suspend the permits of those who attempt to mislead the Commission with false information. These hearings are held in the presence of the Commissioners.

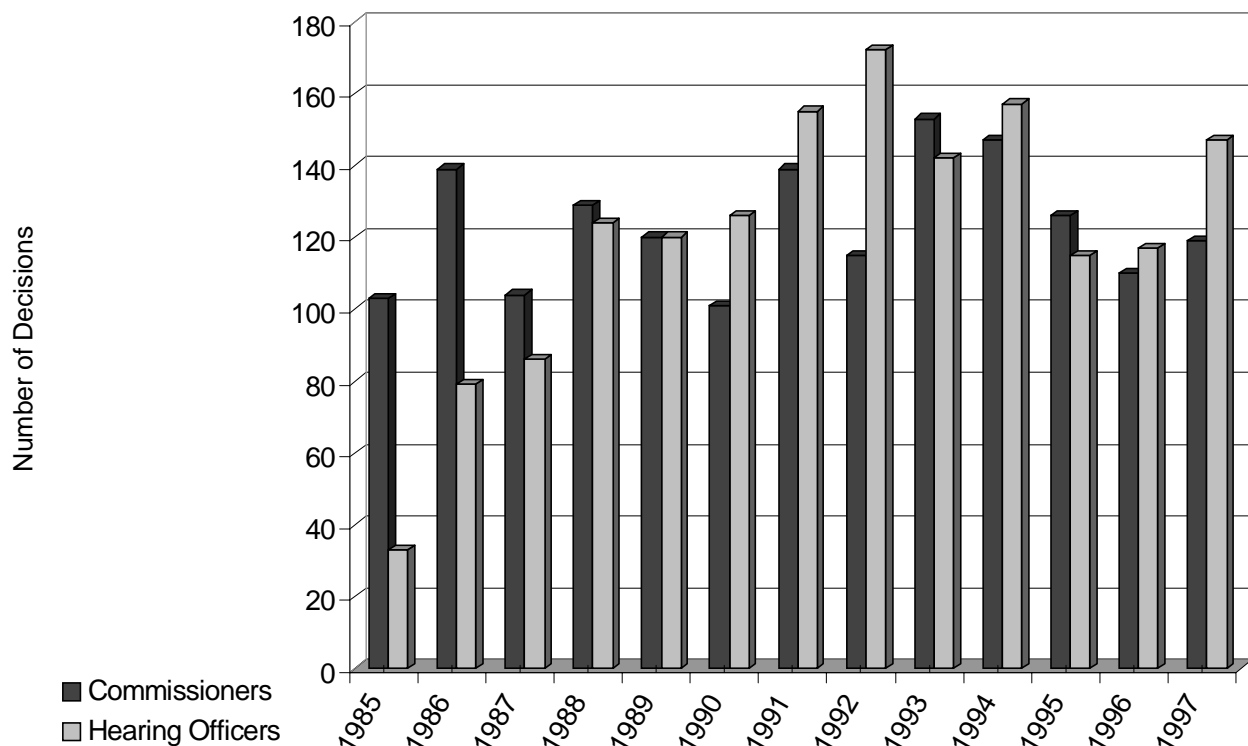
Entry permit applicants are classified (ranked) in a system that measures each applicant's past participation and economic dependence on the fishery.

ADMINISTRATIVE PROCEEDINGS AND DECISIONS

The Adjudications staff issued 147 decisions in 1997: 74 on permit applications, 60 on permit transfers, 2 on notices to show cause and 11 on miscellaneous actions. (The miscellaneous actions were primarily on qualifications for interim-use permits in fisheries subject to moratoria.) At the end of the year, 378 cases were pending before hearing officers.

The Commissioners adjudicated a total of 119 cases during 1997: 64 permit applications, 44 permit transfers and 11 miscellaneous actions. At the end of the year, 219 cases were pending before the Commissioners.

DECISIONS COMPLETED

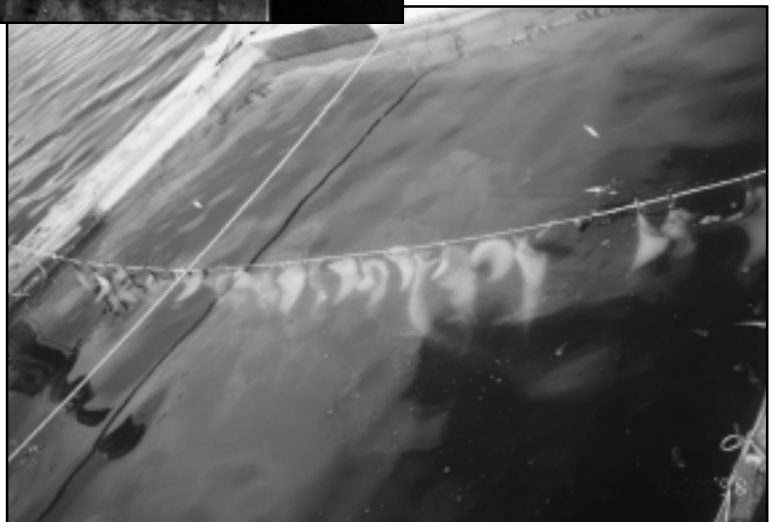


JUDICIAL RULINGS AND APPEALS

The Alaska Supreme Court's only limited entry decision in 1997 was *Bartlett v. State*, CFEC, 948 P.2d 987 (Alaska 1997). The Supreme Court upheld a Commission regulation, 20 AAC 05.515, barring the acceptance of late entry permit applications after the classification level for qualifying for permits had been lowered or the maximum number of permits for the fishery had been issued.



Photo courtesy Frank See, Sr.



Photos courtesy Joe Demmert, Sr.

LICENSING

OVERVIEW

The Commission's licensing section is responsible for issuance of annual permits and vessel licenses required for participation in Alaskan commercial fisheries. The section also handles replacement of lost licenses, documentation of vessel ownership changes, salmon net area registrations, and issuance of emergency and permanent permit transfers.

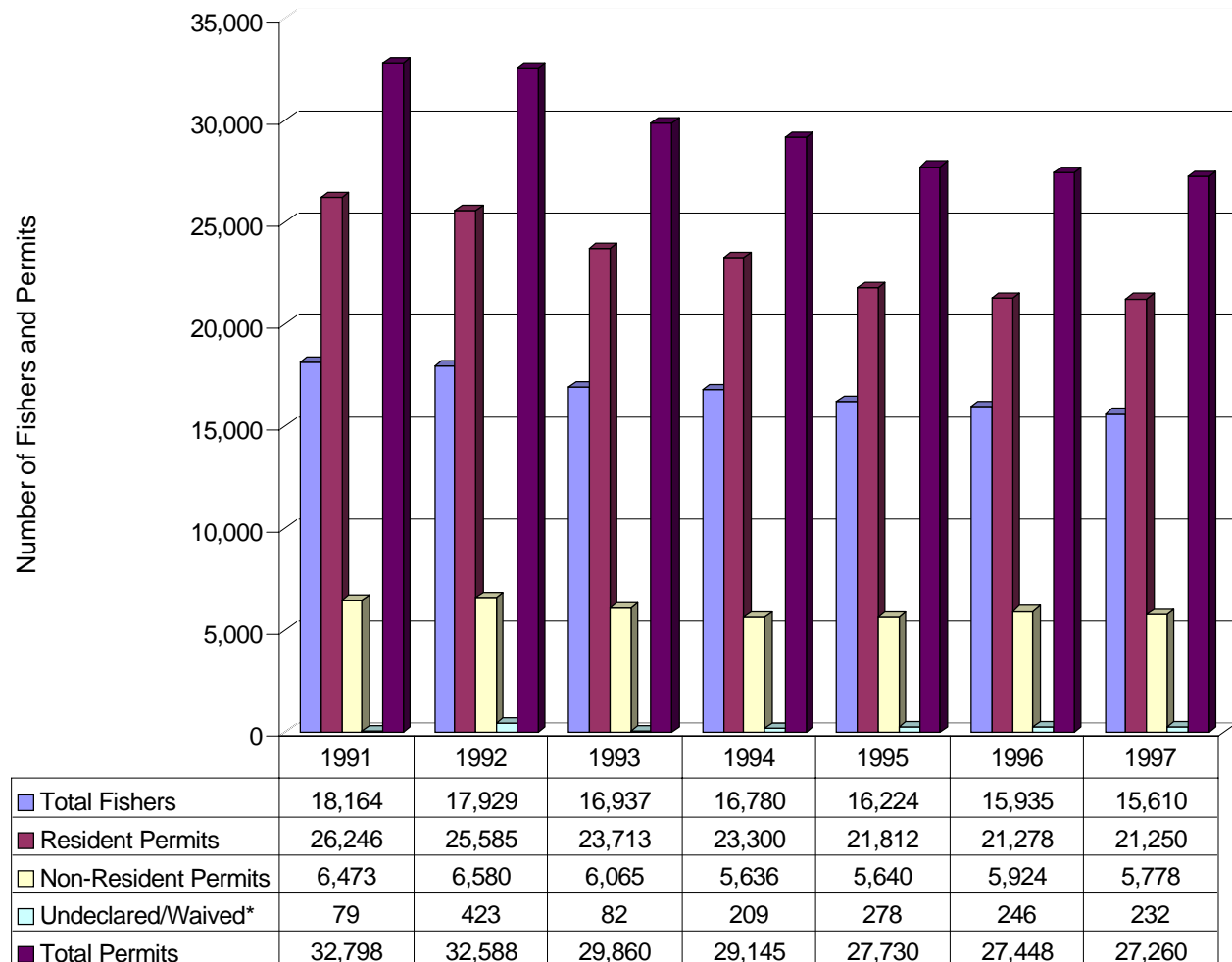
A number of developments in recent years have increased the quantity and complexity of the work of the licensing section. These include actions by the Commission and the Legislature to bring additional fisheries under limitation or moratoria; implementation of new types of licensing mechanisms; adoption of regulatory changes by the Board of Fisheries; and actions by federal agencies to create moratoria, license limitation programs, Individual Fishery Quota (IFQ) programs and Community Development Quota (CDQ) programs for Alaska fisheries. In addition to keeping up with additional licensing responsibilities associated with these developments, the staff must respond to thousands of information requests annually with current, accurate information. To meet ever increasing demands, the licensing section is continually streamlining procedures and automating processing wherever possible.

The total number of permits and vessel licenses issued for 1997 increased slightly from 1996 but remains somewhat lower than in the early 1990's. The drop in the number of annual permits reflects a decreasing number of fishers participating in Alaska's fisheries. (See table below.) The decline in numbers of permits is most evident in the halibut, sablefish, and miscellaneous finfish fisheries.

A number of developments in recent years have increased the quantity and complexity of the work of the licensing section.

To meet ever increasing demands, the licensing section is continually streamlining procedures and automating processing wherever possible.

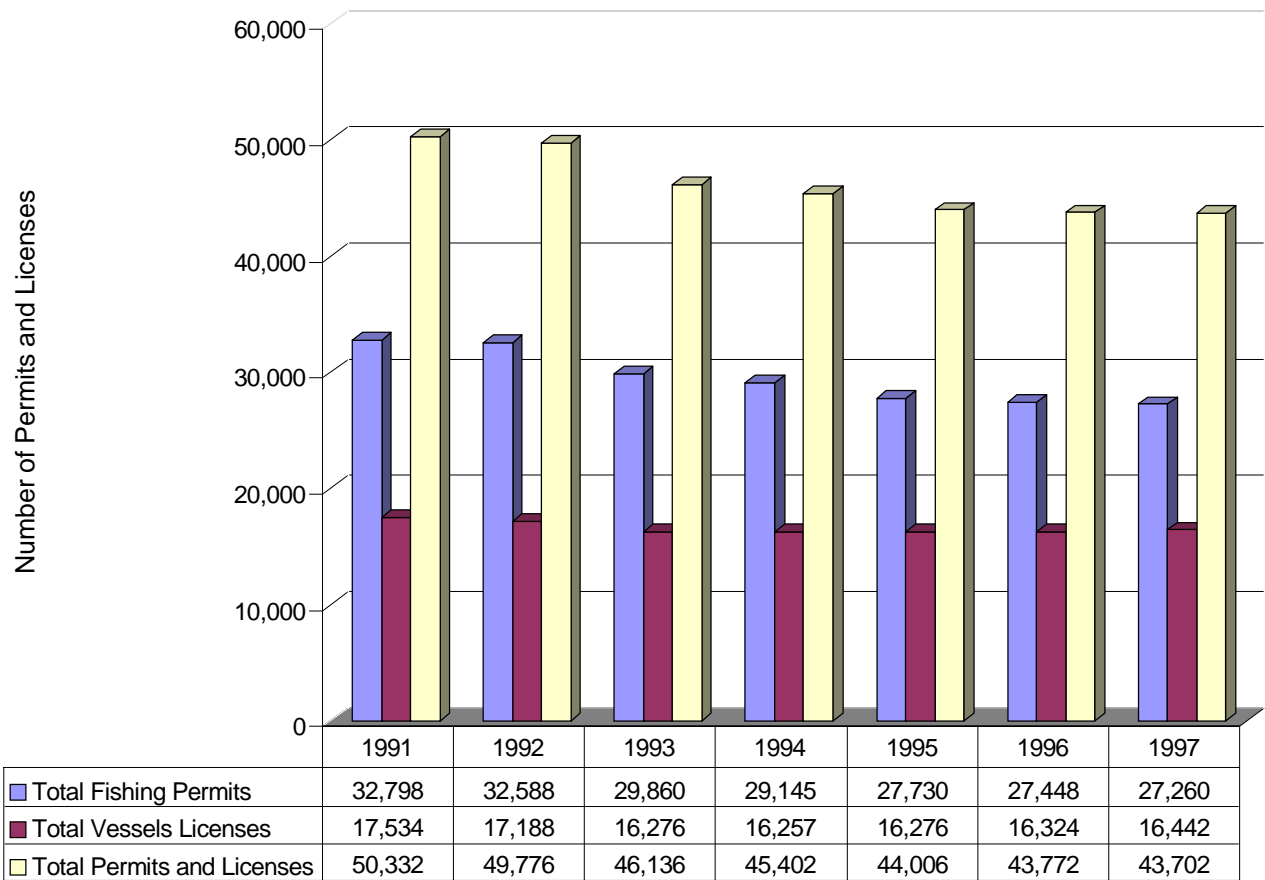
PERMITS ISSUED BY YEAR



Note: Number of permits is higher than number of fishers as some individuals hold more than one permit.
 Breakdown between resident/non-resident is determined by fees paid.
 All figures include permits issued in both open access fisheries and limited fisheries.

* Permits issued, but fees later refunded due to fishery not opening (thus residency not distinguishable).

FISHING PERMITS AND VESSEL LICENSES ISSUED BY YEAR



Figures include permits issued in both open access fisheries and limited fisheries.

NEW DEVELOPMENTS

SCALLOP MORATORIUM

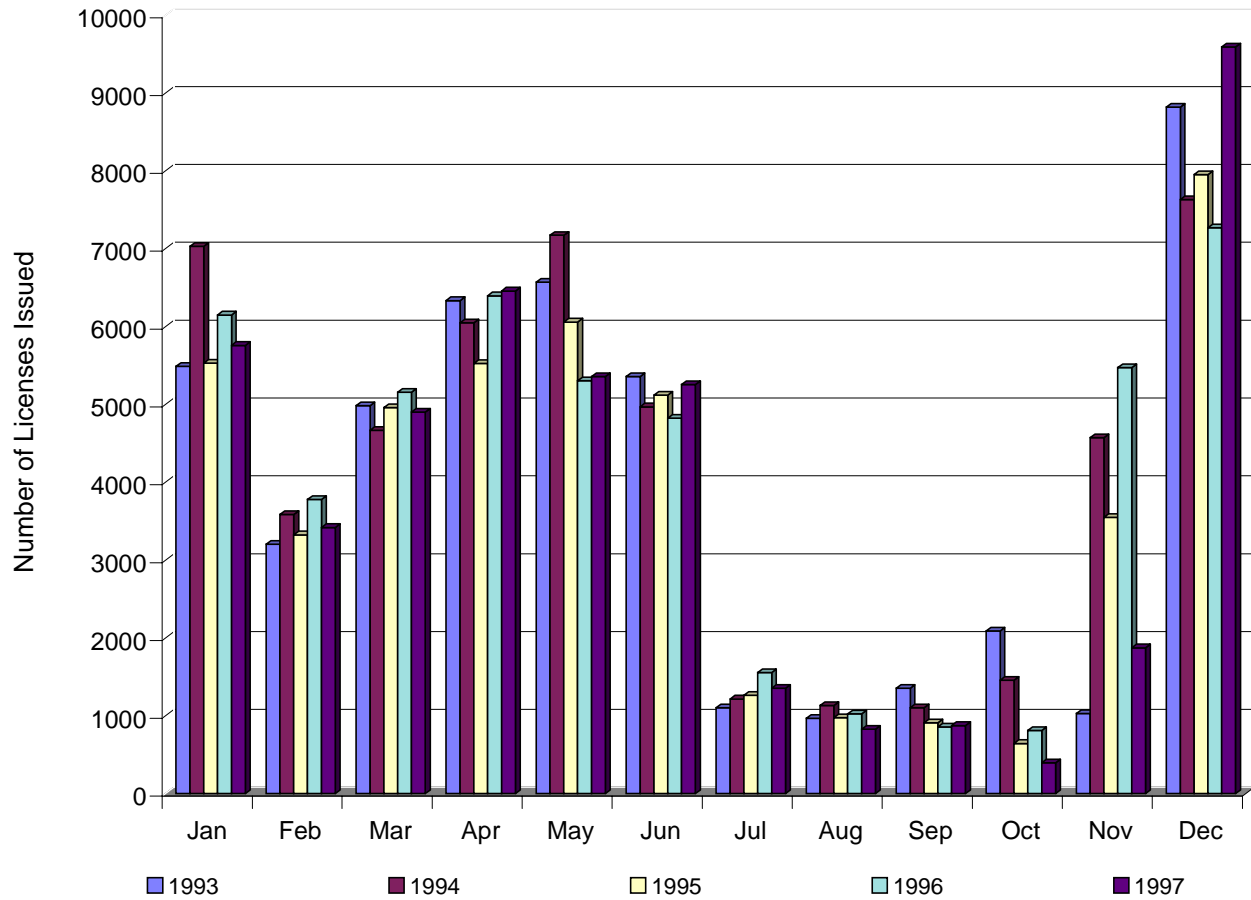
On June 20, 1997, the Governor signed HB 141 establishing a vessel permit moratorium for the statewide and Cook Inlet weathervane scallop fisheries. The legislation directed the Commission to issue vessel permits under the moratorium only to commercial fishing vessels that met eligibility requirements based on use in the fishery before 1997. During 1997, the Commission issued 5 statewide scallop vessel permits and 2 Cook Inlet vessel permits.

APPLICATION FOR CHARTER/GUIDED SPORT FISHING VESSELS

In a cooperative effort with the Alaska Department of Fish and Game (ADF&G) the licensing section developed a revised application form for sport charter vessel licenses. Beginning with the 1998 season, the revised forms will gather data for ADF&G Sportfish Division and the Legislature. Owners of vessels licensed for charter activity in the past were sent a supplemental notice explaining the new questions on the charter vessel application form. Additional information requested includes hull identification numbers, charter business names and business license numbers, as well as specific areas the charter activity will take place. This information will be helpful to ADF&G in its management of Alaska's sport fisheries. In addition, it will assist ADF&G, Board of Fisheries, and Legislature in future decisions about the orderly development of this growing industry.

Beginning with the 1998 season, the revised forms will gather data for ADF&G Sportfish Division and the Legislature.

LICENSES ISSUED BY MONTH



During 1997, the Commission reviewed 2004 requests for permanent and emergency transfers of permits.

PERMIT TRANSFERS

During 1997, the Commission reviewed 2004 requests for permanent and emergency transfers of permits. These included 984 emergency transfer requests, up slightly from 937 in 1996, and 1020 permanent transfer requests, also slightly higher than the 994 requests in 1996.

PERMANENT TRANSFERS

A breakdown of permanent transfer requests by type of transfer is shown below:

See the tables at the back of this report for additional information relating to permanent transfers.

PERMANENT TRANSFERS REQUESTS BY TYPE

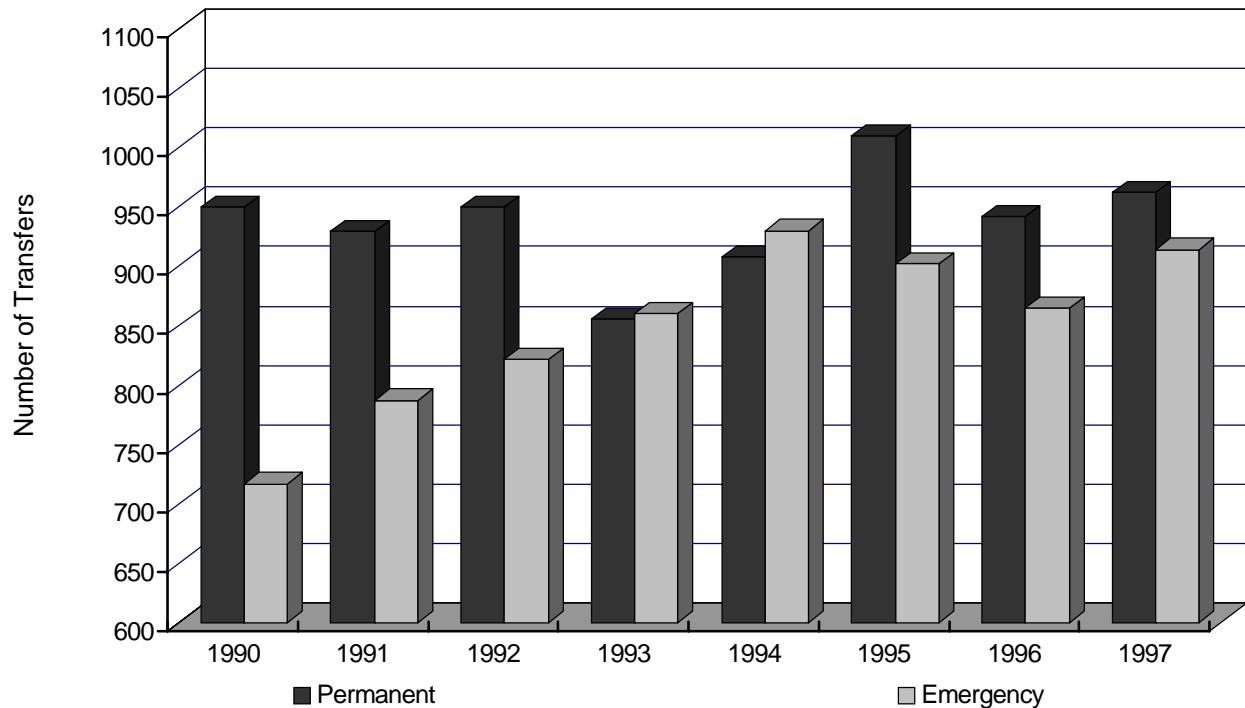
| | |
|--|-------------|
| Regular transfers | 932 |
| Survivorship transfers to spouse | 22 |
| Foreclosure transfers by loan agencies | 7 |
| TOTAL APPROVED | 961 |
| Denied Transfers | 39 |
| Withdrawn Transfer Requests | 20 |
| TOTAL REVIEWED | 1020 |

EMERGENCY TRANSFERS

Of the 984 emergency transfer requests reviewed, 892 were approved on initial review, 92 were denied and 9 requests were withdrawn prior to a determination. Administrative hearings were requested by 51 of the denied applicants and following the hearings, 36 of those requests were granted, while 15 of the denials were upheld.

The final count of emergency transfers approved was 919, involving 876 permits as some permits were transferred more than one time during the year.

PERMANENT AND EMERGENCY TRANSFERS



VESSEL LICENSE FEE CATEGORIES

In 1996, the Legislature revised vessel license fees. As a result, in 1997 vessel license fees were based on overall length of vessels. Instead of the \$20 fee which applied to all vessels prior to 1996, the new fee categories range from \$20 for vessels 25' and under up to \$750 for vessels over 250'. The number of vessels in each category and the revenue generated from the revised license fees are shown below:

| CATEGORY BASED ON OVERALL LENGTH OF VESSEL | NUMBER OF VESSELS IN EACH CATEGORY | FEE BASED ON OVERALL LENGTH OF VESSEL | REVENUE GENERATED FROM LICENSE FEES FOR CALENDAR YEAR 1997 |
|---|---|--|---|
| A - 25' and under | 6,651 | \$20 | \$133,020 |
| B - over 25' - 50' | 7,576 | \$50 | \$378,800 |
| C - over 50' - 75' | 956 | \$100 | \$95,600 |
| D - over 75' - 150' | 544 | \$250 | \$136,000 |
| E - over 150' - 250' | 138 | \$500 | \$69,000 |
| F - over 250' | 29 | \$750 | \$21,750 |
| TOTAL | 15,894 | | \$834,170 |

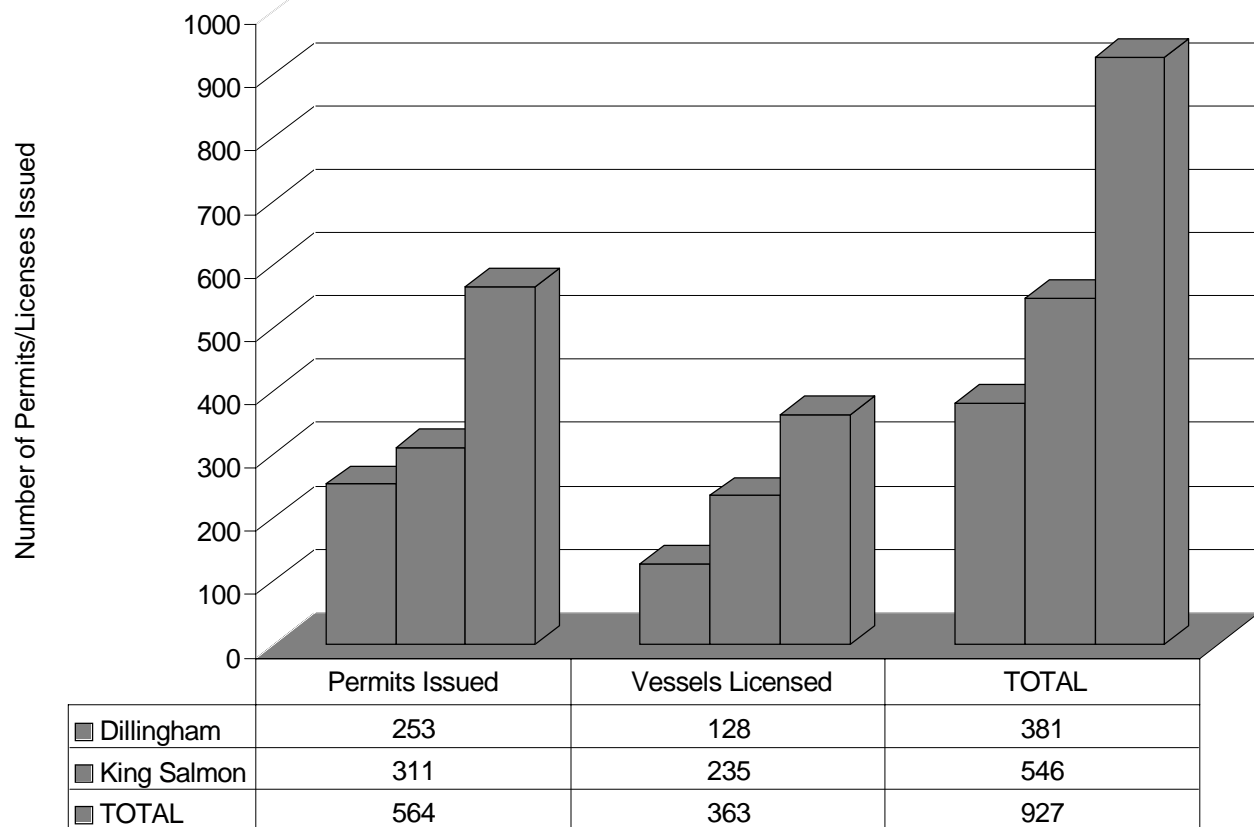
LICENSING ACTIVITY

| | |
|---|--------|
| Limited Entry Permits <i>Not</i> Renewed | 625 |
| Limited Entry Permits with Fees Waived* | 103 |
| Limited Entry Permits Revoked or Lapsed (since 1975) | 823 |
| Limited Entry Permits Renewed | 12,911 |
| Interim Permits in Fisheries Under Limitation or Moratoria .. | 2,000 |
| Interim Permits in Open-to-Entry Fisheries | 12,005 |
| Special Harvest Area (Hatchery) permits | 22 |
| Educational Entry Permits | 1 |
| Vessel Permits** | 24 |
| <p>*Fees for limited entry permits may be waived in the event of season-long closures.</p> <p>**Vessel permits were issued in the Bering Sea Korean hair crab fishery and the statewide and Cook Inlet scallop fisheries.</p> | |

FIELD OFFICE OPERATIONS

Licensing section staff again provided in-season licensing and transfer assistance in Dillingham and King Salmon during 1997. The Dillingham office was staffed prior to the herring season from April 22-26 and for salmon from June 4-16. The King Salmon office was operated June 10 - July 19. The field offices generated \$11,000 in “user fees” to cover operating costs. Staff assisted with 148 emergency transfer requests and issued 927 permits and vessel licenses. The Commission’s staff also assisted with ADF&G’s area registration.

PERMITS ISSUED IN FIELD OFFICES



RESEARCH

OVERVIEW

The research section provides the background analyses and studies needed by the Commission. This section, coupled with the Commission's data processing section, also produces basic economic data on Alaska's fisheries. The research section produces both standard and specialized reports. The Commission's reports have been used to help address a wide range of policy questions.

In 1997, the Commission's research staff was involved in many projects. These projects included efforts to monitor trends in Alaska's fisheries, to evaluate the need for access controls in particular fisheries, to develop hardship ranking systems in newly limited fisheries, and to provide other agencies and users with needed data and analyses.

The staff produced analyses on issues for the Legislature, the Office of the Governor, the Alaska Department of Fish and Game (ADF&G), and the Alaska Board of Fisheries (Board). In addition, the staff answered numerous information and data requests from the general public.

NEW LIMITATIONS

Each year the Commission receives petitions to limit additional fisheries. Petitions often occur when participation levels in a fishery rise dramatically and participants and fishery managers become concerned about both resource conservation and the economic health and stability of the fishery.

The Commission studies each fishery to see if limitation is really needed and to determine if a license-type limited entry program developed under AS 16.43 would be a suitable means for containing effort in the fishery. The Commission does not

Petitions often occur when participation levels in a fishery rise dramatically and participants and fishery managers become concerned about both resource conservation and the economic health and stability of the fishery.

adopt a limitation program for a fishery unless it concludes that limitation is needed and the program will provide significant benefits as defined by statute.

The research section provided analyses and data support for all new limitations undertaken in 1997 including Southeast shrimp beam trawl, Southeast shrimp otter trawl, and Goodnews Bay roe herring gill net fishery. The research section also provided analyses and data support for point systems developed for Southeast pot shrimp fishery, Prince William Sound sablefish fisheries, and Northern and Southern Southeast herring spawn-on-kelp pound fisheries.

OPTIMUM NUMBERS AND FLEET REDUCTIONS

The dramatic growth in farmed salmon production in recent years has led to drastic reductions in ex-vessel prices for Alaska's wild salmon. The livelihoods of Alaska salmon fishers and their families have been hurt severely by these price declines. As a result, there is a renewed and growing public interest in finding ways to reduce harvesting costs so that Alaska's commercial salmon fishers can better compete under these new world market conditions. Many persons are again talking about finding ways to reduce the size of Alaska's salmon harvesting fleets.

*Many persons are again
talking about finding ways
to reduce the size of
Alaska's salmon harvesting
fleets.*

Development of a viable fisherman-funded fleet reduction program will depend upon a satisfactory resolution of some of the issues raised by the Alaska Supreme Court in *Johns v. State*, CFEC, 758 P.2d 1256. During 1997, the Commission maintained its dialogue with individuals and gear groups interested in gear reductions.

The Commission participated in Governor Knowles' salmon strategy forum held in Juneau in January of 1997. The forum included a work session on buyback and fleet reduction alternatives. Some of the fishers who participated were interested in exploring other fleet reduction measures that would not require a government-run buyback program. Some of these ideas may eventually develop into Board proposals or statutory proposals.

RESEARCH ON INDIVIDUAL FISHING QUOTA PROGRAMS

During 1997, the research section completed three different studies on the new halibut and sablefish individual fishing quota programs (IFQ).

The North Pacific Fishery Management Council (NPFMC) adopted these new IFQ programs and the programs were implemented for the first time in 1995. The new IFQ programs are administered by the National Marine Fisheries Service's Restricted Access Management Division (NMFS-RAM).

These programs represent a dramatic change from an open access fishery and a considerable change from a license-type limited entry program. In Alaska, the IFQ programs have been controversial. While the NPFMC built many constraints into these programs to retain the pre-IFQ character of the fishing fleets, some Alaskans fear that there will be dramatic changes in these fisheries under IFQs and that some fishing communities may suffer losses in their economic base.

Because of these concerns, Governor Knowles asked the state and NMFS to study and to continue to monitor changes occurring under these new IFQ programs. In 1995 and 1996, NMFS-

... fishers who participated were interested in exploring other fleet reduction measures that would not require a government-run buyback program.

These programs represent a dramatic change from an open access fishery and a considerable change from a license-type limited entry program.

RAM and the state formed a study team and developed several study projects to examine changes under the IFQ programs. The Commission conducted three of the studies.

In 1997, this work to monitor changes under these programs continued. The Commission was funded by a NOAA award to update two of the previous studies. The reports for these new studies are titled:

- Changes Under Alaska's Halibut IFQ Program, 1995-1996.
- Changes Under Alaska's Sablefish IFQ Program, 1995-1996.

A third report focused on fishing operations that participated during the 1991 to 1994 time period but did not receive an initial quota share allocation under the IFQ program. This study was released in 1997 after extensive revisions. The third report is titled:

- Participation In The Alaska Halibut and Sablefish Fisheries, 1991 to 1994. (96-9RN)

Eleven of these reports are available from the NPFMC in Anchorage. These reports are also available on the Commission's home page at WWW.CFEC.STATE.AK.US.

OTHER PROJECTS AND REPORTS

The research staff produced monthly permit value estimates for the Department of Commerce and Economic Development (DCED) and other users and produced basic information tables on many of Alaska's commercial fisheries. The research and data processing sections also worked to produce reports on

Alaska's fisheries which were used in the National Marine Fisheries Service (NMFS) publication Fisheries of The United States, 1996.

During the year the Commission's research staff produced other reports for the Commission and other analyses requested by the Office of the Governor, ADF&G, the Board and the Alaska Legislature. The following is a listing of non-confidential reports that the Commission's staff members prepared during 1997.

- Harvest and Gross Earnings In The Cook Inlet Salmon Fisheries by Species, Area, and Resident Status (97-1N) by E. Dinneford.
- Changes In the Distribution of Alaska's Commercial Fisheries Entry Permits, 1975-1996 (97-2N) by A. Tingley, K. Iverson, and E. Dinneford.
- Executive Summary - Changes In the Distribution of Alaska's Commercial Fisheries Entry Permits, 1975-1996 (97-2N-EXEC) by K. Iverson, A. Tingley, and E. Dinneford.
- Data On Permit Holdings and Landings By Persons From Petersburg, Alaska by E. Dinneford, S. Burns, and S. Shirley.
- Bristol Bay Salmon Drift Gill Net Fishery: Harvest and Gross Earnings Data by Species and Resident-Type, 1992-1996 (97-4N) by E. Dinneford and A. Tingley.
- Bristol Bay Salmon Set Gill Net Fishery: Harvest and Gross Earnings Data By Species and Resident-type, 1992-1996 (97-5N) by E. Dinneford and A. Tingley.
- Harvest and Earnings Data For The Togiak Roe Herring Gill Net Fishery By Resident-type, 1975-1996 (97-6N) by A. Tingley.

- Harvest and Earnings Data For The Togiak Roe Herring Purse Seine Fishery By Resident-type, 1975-1996 (97-7N) by A. Tingley.
- Regression Analysis Of Alaska Halibut and Sablefish QS Prices, 1995-1996 (97-8N) by Ben Muse.
- Harvest and Earnings Data For The Norton Sound Roe Herring Gill Net Fishery By Resident-type, 1985-1996 (97-9N) by A. Tingley.

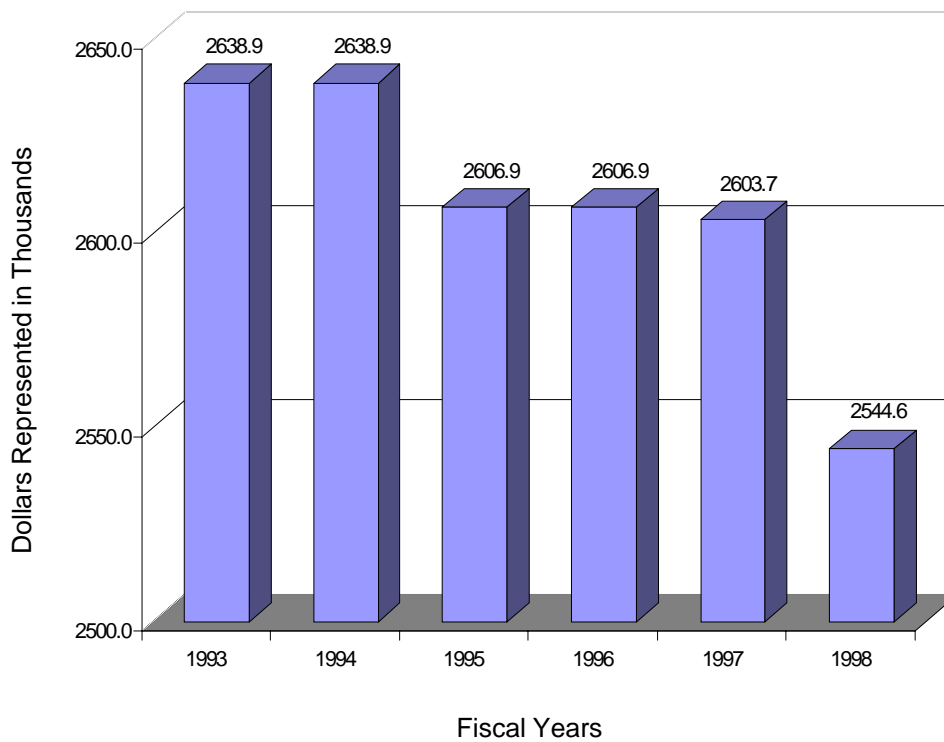
REVENUE

Revenues generated by the Commission come primarily from two sources: the issuance of commercial fishing permits and vessel licenses. Additional revenue come primarily from research and data processing services and reports requested by the public, fishing organizations and fisheries research groups. Total revenue for FY97 was \$5.4 million. This was a slight increase from FY96.

The General Fund revenues generated by the Commission continue to be approximately twice the amount of General Fund monies appropriated by the legislature to run the Commission. Despite an ever increasing workload and increased costs, the Commission has experienced reduction in budget and staff.

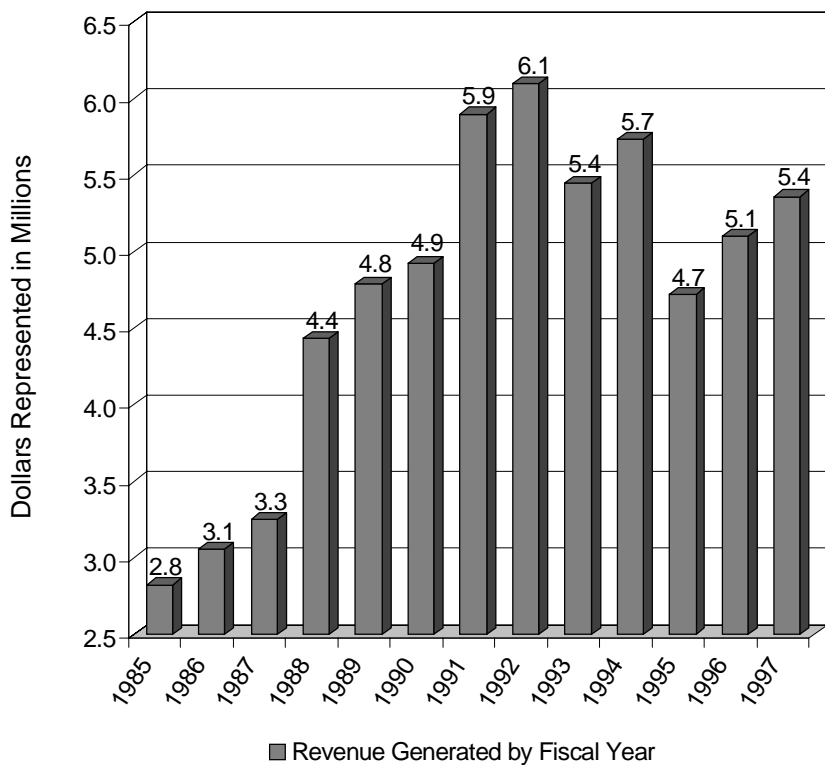
The General Fund revenues generated by the Commission continue to be approximately twice the amount of general fund monies appropriated by the legislature to run the Commission.

CFEC BUDGET - GENERAL FUND




REVENUE GENERATED BY CFEC

| REVENUE SOURCE* | FISCAL YEAR 1997 |
|---|--------------------|
| Permit Fees | \$4,339,030 |
| Vessel License Fees | \$863,652 |
| Limited Entry Application Fees | \$78,040 |
| Field Office User Fees | \$10,100 |
| NSF Check Penalties | \$675 |
| Refunds Paid | (\$62,755) |
| Miscellaneous Revenue | \$133,525 |
| (Special Requests, Reports, and Misc.) | |
| Total Revenue (in thousands) | \$5,362.267 |



*This report indicates total revenue during FY97 from each source, regardless of the license year.

APPENDICES

| | |
|--|----|
|  Employee List of Names and Internet Addresses | 36 |
| Decisions and Activities, Calendar Years 1993-1996 | 37 |
| Table 1. Permit and Permit Transfer Statistics, 1975-1997 | 42 |
| Table 2 Loans Approved by the Department of Commerce and Economic Development for the Purchase of Entry Permits Summed by Election District over the 1997 Time Period. | 68 |
| Table 3. Loans Approved by the Department of Commerce and Economic Development for the Purchase of Entry Permits by Calendar Year 1972-1997 | 69 |
| Table 4. Loans Approved by the Department of Commerce and Economic Development for the Purchase of Entry Permits, Summed by Election District over the 1994-1997 Time Period | 70 |

COMMERCIAL FISHERIES ENTRY COMMISSION

EMPLOYEE LIST OF NAMES AND INTERNET ADDRESSES

ADJUDICATIONS

| | | |
|------------------|------------------------------|-----------------------------------|
| Frank Glass | Adjudications Project Leader | Frank_Glass@cfec.state.ak.us |
| David A. Ingram | Hearing Officer III | Dave_Ingram@cfec.state.ak.us |
| Jim Bowen | Hearing Officer II | Jim_Bowen@cfec.state.ak.us |
| Joyce James | Hearing Officer II | Joyce_James@cfec.state.ak.us |
| Jonathan Sperber | Hearing Officer I | Jonathan_Sperber@cfec.state.ak.us |
| Susan Haymes | Law Specialist II | Susan_Haymes@cfec.state.ak.us |
| Dorothy Frary | Managing Paralegal | Dorothy_Frary@cfec.state.ak.us |
| Jackie Audap | Paralegal I | Jackie_Audap@cfec.state.ak.us |
| Beccy Kalwara | Commission Secretary II | Beccy_Kalwara@cfec.state.ak.us |
| Sandi Thomas | Publication Specialist | Sandi_Thomas@cfec.state.ak.us |

DATA PROCESSING

| | | |
|------------------|--------------------------------|-----------------------------------|
| Roger Kolden | Data Processing Project Leader | Roger_Kolden@cfec.state.ak.us |
| Mark Neyhart | Analyst Programmer V | Mark_Neyhart@cfec.state.ak.us |
| Don Huntsman | Analyst Programmer V | Don_Huntsman@cfec.state.ak.us |
| Laura Joralemon | Analyst Programmer V | Laura_Joralemon@cfec.state.ak.us |
| Nancy Free-Sloan | Analyst Programmer IV | Nancy_Free-Sloan@cfec.state.ak.us |
| Linda Daak | Analyst Programmer III | Linda_Daak@cfec.state.ak.us |
| Susan Burns | Analyst Programmer I | Susan_Burns@cfec.state.ak.us |
| Ted Fosket | Administrative Officer | Ted_Fosket@cfec.state.ak.us |

LICENSING

| | | |
|-----------------|------------------------------|----------------------------------|
| Karen Wells | Licensing Project Leader | Taffy_Wells@cfec.state.ak.us |
| Dawn Jackson | Assistant Project Leader | Dawn_Jackson@cfec.state.ak.us |
| Elerene McClure | Transfer Technician II | Elerene_McClure@cfec.state.ak.us |
| Pamela Reed | Transfer Technician I | Pam_Reed@cfec.state.ak.us |
| Karil Miller | Transfer Technician | Karil_Miller@cfec.state.ak.us |
| Lucy Perreard | Transfer Technician | Lucy_Perreard@cfec.state.ak.us |
| Yvonne Miller | Receptionist/Permit Clerk II | Yvonne_Miller@cfec.state.ak.us |
| Denise Nakachi | Receptionist/Permit Clerk I | Denise_Nakachi@cfec.state.ak.us |

RESEARCH AND PLANNING

| | | |
|------------------|------------------------------------|-----------------------------------|
| Kurt Schelle | Research & Planning Project Leader | Kurt_Schelle@cfec.state.ak.us |
| Ben Muse | Economist III | Ben_Muse@cfec.state.ak.us |
| Elaine Dinneford | Research Analyst III | Elaine_Dinneford@cfec.state.ak.us |
| Kurt Iverson | Research Analyst III | Kurt_Iverson@cfec.state.ak.us |
| Al Tingley | Research Analyst III | Al_Tingley@cfec.state.ak.us |
| Susan Shirley | Research Analyst III | Susan_Shirley@cfec.state.ak.us |

DECISIONS AND ACTIVITIES

CALENDAR YEAR 1996

- Conducted research, held public hearings and adopted regulations limiting the Southeastern Alaska shrimp pot fishery.
- Conducted research, held public hearings and adopted regulations establishing point systems and an application period for the Southeastern Alaska dungeness crab, the Cook Inlet dungeness crab fisheries, and the Southeastern Alaska shrimp pot fishery.
- Held application period for the Southeastern Alaska dungeness crab and Cook Inlet dungeness crab fisheries.
- Received petitions to limit additional fisheries and began required analysis.
- Participated in the Koliganek Economic Development Council meetings.
- Served on the Child Support Enforcement Division's Rural Task Force, concerning child support and Alaska fishers.
- The legislature adopted HB 297 which raised the annual vessel license fee based on overall length.
- The legislature adopted HB 547 which established a four year moratorium on entry into Southeast Alaska dive fisheries.
- The legislature adopted HB 538 which established a four year moratorium on vessels participating in the Bering Sea Korean hair crab fishery and directed the Commission to draft legislation for a vessel permit limited entry program.

- The legislature adopted SB 42 giving the Commission the authority to propose permit stacking (an individual could hold more than one permit up to limits set by the Board of Fisheries), where the Commission has imposed effort fishing capacity restrictions on individual entry permits.
- The IRS conducted a pre-Christmas sale of a Cook Inlet salmon set net permit and sold the permit, valued at \$30,000, for only \$5,005.
- The Commission issued the *Carle* decision denying a request by the IRS to transfer a Southeast Alaska salmon purse seine entry permit to the highest bidder in a forced permit auction held in December of 1995.
- Representatives from the Commission, other state agencies and Senator Steven's office met with the IRS to explore means to help permit holders achieve voluntary tax compliance and to eliminate forced sales of limited entry permits.
- Commission statutes, regulations, public notices, transfer survey, and staff's e-mail addresses became available to users of the Commission's internet site.
- Continued to defend state against elimination of non-resident fee differential. *Carlson v. CFEC*.

CALENDAR YEAR 1995

- Conducted research, held public meetings and adopted regulations limiting the Northern and Southern Southeast herring spawn-on-kelp pound fisheries, the Prince William sound sablefish fisheries, and the Southeastern Alaska dungeness crab fisheries.

- Held public meetings in Southeast Alaska to discuss the future of the moratorium in the Southeastern dungeness crab fisheries.
- Received petitions to limit additional fisheries and began required analysis.
- Served on an Alaska Federation of Natives (AFN) Task Force concerning the IRS and Alaska fishers.
- Served on a Bristol Bay Native Association Commission to address issues concerning limited entry.
- Participated in the Governor's Salmon Strategy Task Force.
- The Commission, together with the Division of Investments and the AFN, persuaded the IRS not to implement its new electronic levy program against those fishers eligible for the new loan program.
- The Commission, together with the Division of Investments, the IRS, and AFN, developed and began outreach to implement the new Commercial Fishing Tax Obligation Loan Program.
- The Commission's Bulletin Board System became available to Internet.
- Continued to defend state against elimination of non-resident fee differential. *Carlson v. CFEC*.

CALENDAR YEAR 1994

- Commission and the Attorney General successfully defended against a lawsuit (based on the *Johns* case) seeking to eliminate limited entry in the Bristol Bay drift gill net fishery.

- Adopted optimum number regulation for the Southeastern Alaska roe herring purse seine fishery. (*Johns v. State*, CFEC)
- Conducted research, held public hearings, and adopted regulations limiting the Cook Inlet dungeness crab fishery.
- Conducted research and prepared a report on the Southeastern Alaska dungeness crab fishery to assist in determining if some form of limited entry is warranted for the fishery following the moratorium.
- Participated in the AFN Task Force concerning the IRS and Alaska commercial fishers.
- The legislature adopted SB 251 (Ch 62, SLA 1994), which authorized the existing Commercial Fishing Loan Program to make loans of up to \$30,000 to fishers in danger of IRS seizure and forced sale of their entry permits.
- Developed new licensing system to run on the Commission's local area network (LAN) rather than the state mainframe computer.
- Continued to defend state against elimination of non-resident fee differential. *Carlson v. CFEC*.

CALENDAR YEAR 1993

- Completed optimum number study for the Southeastern Alaska roe herring purse seine fishery.
- Conducted workshops related to getting and keeping limited entry permits in local communities.

- Continued to defend state against elimination of non-resident fee differential. *Carlson v. CFEC*.

PRIOR YEARS

Information on prior years can be found in previous annual reports or on the internet at our web site WWW.CFEC.STATE.AK.US.



Photo courtesy Frank See, Sr.

Table 1. Permit and Permit Transfer Statistics, 1975-1997 *

| Fishery and Area | Year | Actual Transfer Information | | | | Transfer Survey Information | | | | | | |
|--|---|-----------------------------|------------------------------------|---------------------------|---|--------------------------------------|--------------------------|------------------------------|------------------------------|--------------------------------|---------------------------------------|---|
| | | Total Permanent Permits | Permanent Permits Held by Alaskans | Total Number of Transfers | Number of Permits Involved in Transfers | Change in Residency Due to Transfers | Permits with State Liens | Number of Non-mon. Transfers | Number of Monetary Transfers | Average Price Paid For Permits | Number of Financed Monetary Transfers | |
| Sablefish Longline S. Southeastern | 1989 | 2 | 1 | 0 | 0 | 0 | 0 | 0 | 0 | — | 0 | |
| | 1990 | 3 | 2 | 1 | 1 | 0 | 1 | 0 | 1 | *** | 0 | |
| | 1991 | 3 | 1 | 1 | 1 | -1 | 1 | 0 | 1 | *** | 0 | |
| | 1992 | 4 | 0 | 1 | 1 | -1 | 0 | 0 | 1 | *** | 0 | |
| | 1993 | 4 | 2 | 1 | 1 | +1 | 1 | 0 | 1 | *** | 1 | |
| | 1994 | 4 | 2 | 1 | 1 | 0 | 1 | 1 | 0 | — | 0 | |
| | 1995 | 4 | 2 | 1 | 1 | 0 | 1 | 1 | 0 | — | 0 | |
| | 1996 | 4 | 3 | 1 | 1 | +1 | 1 | 0 | 1 | *** | 1 | |
| | 1997 | 4 | 3 | 0 | 0 | 0 | 1 | 0 | 0 | — | 0 | |
| | N. Southeastern | 1988 | 16 | 14 | 0 | 0 | 0 | 0 | 0 | 0 | — | 0 |
| | | 1989 | 27 | 23 | 1 | 1 | 0 | 0 | 0 | 1 | *** | 0 |
| | | 1990 | 27 | 23 | 2 | 2 | 0 | 1 | 0 | 2 | *** | 0 |
| | | 1991 | 28 | 22 | 3 | 3 | -1 | 0 | 0 | 3 | *** | 0 |
| | | 1992 | 32 | 26 | 6 | 6 | 0 | 3 | 2 | 4 | 149,000 | 2 |
| | | 1993 | 34 | 28 | 2 | 2 | 0 | 3 | 0 | 2 | *** | 1 |
| | | 1994 | 34 | 29 | 3 | 3 | +1 | 5 | 1 | 2 | *** | 2 |
| | | 1995 | 34 | 28 | 7 | 7 | -1 | 6 | 1 | 6 | 190,000 | 4 |
| 1996 | | 36 | 30 | 3 | 3 | +1 | 6 | 1 | 2 | *** | 1 | |
| 1997 | | 37 | 31 | 3 | 3 | 0 | 5 | 1 | 2 | *** | 0 | |
| Sablefish Pots S. Southeastern | | 1988 | 1 | 1 | 0 | 0 | 0 | 0 | 0 | 0 | — | 0 |
| | 1989 | 1 | 1 | 0 | 0 | 0 | 0 | 0 | 0 | — | 0 | |
| | 1990 | 1 | 1 | 0 | 0 | 0 | 0 | 0 | 0 | — | 0 | |
| | 1991 | 1 | 1 | 0 | 0 | 0 | 0 | 0 | 0 | — | 0 | |
| | 1992 | 1 | 1 | 0 | 0 | 0 | 0 | 0 | 0 | — | 0 | |
| | 1993 | 1 | 1 | 0 | 0 | 0 | 0 | 0 | 0 | — | 0 | |
| | 1994 | 1 | 1 | 0 | 0 | 0 | 0 | 0 | 0 | — | 0 | |
| | 1995 | 1 | 1 | 0 | 0 | 0 | 0 | 0 | 0 | — | 0 | |
| | 1996 | 1 | 1 | 0 | 0 | 0 | 0 | 0 | 0 | — | 0 | |
| | 1997 | 1 | 1 | 1 | 1 | 0 | 0 | 0 | 1 | *** | 0 | |
| | Dungeness Ring Net Southeastern | 1997 | 8 | 8 | 0 | 0 | 0 | 0 | 0 | 0 | — | 0 |
| | | Cook Inlet | 1997 | 1 | 1 | 0 | 0 | 0 | 0 | 0 | — | 0 |

Table 1. Permit and Permit Transfer Statistics, 1975-1997 *

| Fishery and Area | Year | Actual Transfer Information | | | | Transfer Survey Information | | | | | |
|--|------|-----------------------------|------------------------------------|---------------------------|---|--------------------------------------|--------------------------|------------------------------|------------------------------|--------------------------------|---------------------------------------|
| | | Total Permanent Permits | Permanent Permits Held by Alaskans | Total Number of Transfers | Number of Permits Involved in Transfers | Change in Residency Due to Transfers | Permits with State Liens | Number of Non-mon. Transfers | Number of Monetary Transfers | Average Price Paid For Permits | Number of Financed Monetary Transfers |
| Dungeness Dive Southeastern | 1997 | 2 | 2 | 0 | 0 | 0 | 0 | 0 | 0 | — | 0 |
| Dungeness Pot SE 300 Pots | 1997 | 50 | 44 | 15 | 14 | +6 | 7 | 1 | 14 | 87,036 | 6 |
| SE 225 Pots | 1997 | 43 | 34 | 13 | 12 | 0 | 5 | 2 | 11 | 65,133 | 5 |
| SE 150 Pots | 1997 | 78 | 69 | 35 | 33 | +1 | 13 | 7 | 28 | 41,736 | 13 |
| SE 75 Pots | 1997 | 70 | 60 | 26 | 25 | -4 | 4 | 2 | 24 | 21,740 | 8 |
| Cook Inlet Pots | 1997 | 70 | 69 | 4 | 3 | 0 | 0 | 3 | 1 | *** | 0 |
| Herring Purse Seine Southeastern | 1977 | 38 | 36 | 0 | 0 | 0 | 0 | 0 | 0 | — | 0 |
| | 1978 | 41 | 37 | 2 | 2 | -1 | 0 | 0 | 0 | — | 0 |
| | 1979 | 42 | 38 | 2 | 2 | 0 | 1 | 1 | 0 | — | 0 |
| | 1980 | 42 | 38 | 2 | 2 | +1 | 2 | 2 | 0 | — | 0 |
| | 1981 | 41 | 38 | 1 | 1 | 0 | 5 | 1 | 0 | — | 0 |
| | 1982 | 42 | 39 | 4 | 4 | 0 | 5 | 2 | 2 | *** | 2 |
| | 1983 | 42 | 37 | 3 | 3 | -2 | 6 | 1 | 2 | *** | 1 |
| | 1984 | 42 | 37 | 1 | 1 | 0 | 8 | 0 | 1 | *** | 1 |
| | 1985 | 43 | 37 | 2 | 2 | -1 | 9 | 0 | 2 | *** | 2 |
| | 1986 | 44 | 39 | 3 | 3 | 0 | 9 | 1 | 2 | *** | 2 |
| | 1987 | 44 | 39 | 3 | 3 | 0 | 10 | 1 | 2 | *** | 2 |
| | 1988 | 44 | 36 | 3 | 3 | -2 | 10 | 0 | 3 | *** | 0 |
| | 1989 | 44 | 35 | 0 | 0 | 0 | 11 | 0 | 0 | — | 0 |
| | 1990 | 44 | 35 | 2 | 2 | 0 | 11 | 0 | 2 | *** | 1 |
| | 1991 | 44 | 35 | 4 | 4 | 0 | 13 | 0 | 4 | 235,000 | 1 |
| | 1992 | 44 | 35 | 1 | 1 | 0 | 14 | 1 | 0 | — | 0 |
| | 1993 | 45 | 37 | 1 | 1 | +1 | 14 | 0 | 1 | *** | 0 |
| | 1994 | 45 | 35 | 3 | 2 | -1 | 14 | 2 | 1 | *** | 0 |
| | 1995 | 45 | 34 | 4 | 4 | -1 | 14 | 1 | 3 | *** | 1 |
| | 1996 | 45 | 30 | 6 | 6 | -3 | 15 | 1 | 5 | 287,300 | 3 |
| | 1997 | 45 | 31 | 4 | 4 | +1 | 17 | 0 | 4 | 227,500 | 2 |
| Prince Wm Sound | 1977 | 85 | 77 | 3 | 3 | -1 | 0 | 0 | 1 | *** | 1 |
| | 1978 | 91 | 78 | 7 | 6 | -1 | 0 | 0 | 1 | *** | 0 |
| | 1979 | 92 | 80 | 16 | 13 | +1 | 0 | 1 | 2 | *** | 1 |
| | 1980 | 92 | 77 | 7 | 7 | -1 | 5 | 2 | 4 | 46,250 | 3 |
| | 1981 | 92 | 76 | 4 | 4 | 0 | 8 | 2 | 2 | *** | 2 |

Table 1. Permit and Permit Transfer Statistics, 1975-1997 *

| Fishery and Area | Year | Actual Transfer Information | | | | Transfer Survey Information | | | | | | |
|------------------|------------|-----------------------------|------------------------------------|---------------------------|---|--------------------------------------|--------------------------|------------------------------|------------------------------|--------------------------------|---------------------------------------|---|
| | | Total Permanent Permits | Permanent Permits Held by Alaskans | Total Number of Transfers | Number of Permits Involved in Transfers | Change in Residency Due to Transfers | Permits with State Liens | Number of Non-mon. Transfers | Number of Monetary Transfers | Average Price Paid For Permits | Number of Financed Monetary Transfers | |
| Prince Wm Sound | 1982 | 93 | 78 | 10 | 10 | 0 | 14 | 3 | 7 | 71,250 | 6 | |
| | 1983 | 97 | 83 | 2 | 2 | +2 | 16 | 1 | 1 | *** | 1 | |
| | 1984 | 100 | 85 | 16 | 15 | 0 | 22 | 9 | 7 | 63,857 | 7 | |
| | 1985 | 102 | 86 | 16 | 14 | -1 | 25 | 4 | 12 | 66,375 | 5 | |
| | 1986 | 102 | 84 | 13 | 13 | -1 | 29 | 3 | 10 | 75,750 | 6 | |
| | 1987 | 103 | 83 | 6 | 6 | 0 | 29 | 2 | 4 | 96,250 | 1 | |
| | 1988 | 103 | 82 | 11 | 10 | +1 | 34 | 1 | 10 | 160,500 | 3 | |
| | 1989 | 103 | 80 | 1 | 1 | +1 | 37 | 0 | 1 | *** | 1 | |
| | 1990 | 103 | 81 | 8 | 8 | +3 | 36 | 5 | 3 | *** | 2 | |
| | 1991 | 103 | 80 | 7 | 7 | +1 | 35 | 1 | 6 | 222,500 | 2 | |
| | 1992 | 103 | 79 | 11 | 11 | -1 | 37 | 3 | 8 | 187,531 | 2 | |
| | 1993 | 103 | 79 | 3 | 3 | 0 | 38 | 2 | 1 | *** | 1 | |
| | 1994 | 103 | 82 | 5 | 5 | +3 | 38 | 3 | 2 | *** | 1 | |
| | 1995 | 103 | 82 | 5 | 5 | 0 | 31 | 1 | 4 | 59,182 | 1 | |
| | 1996 | 103 | 81 | 8 | 8 | -1 | 28 | 0 | 8 | 71,875 | 2 | |
| | 1997 | 103 | 79 | 8 | 8 | 0 | 31 | 2 | 6 | 125,333 | 4 | |
| | Cook Inlet | 1977 | 61 | 57 | 1 | 1 | 0 | 0 | 0 | 1 | *** | 0 |
| | | 1978 | 67 | 60 | 9 | 7 | -1 | 0 | 1 | 1 | *** | 1 |
| | | 1979 | 68 | 59 | 10 | 7 | 0 | 0 | 0 | 4 | 27,500 | 1 |
| | | 1980 | 68 | 58 | 3 | 3 | 0 | 5 | 1 | 1 | *** | 1 |
| 1981 | | 68 | 56 | 4 | 4 | -1 | 6 | 1 | 3 | *** | 1 | |
| 1982 | | 69 | 58 | 2 | 2 | 0 | 6 | 1 | 1 | *** | 1 | |
| 1983 | | 70 | 59 | 1 | 1 | 0 | 6 | 1 | 0 | — | 0 | |
| 1984 | | 72 | 59 | 3 | 3 | 0 | 7 | 2 | 1 | *** | 1 | |
| 1985 | | 73 | 59 | 12 | 12 | +1 | 8 | 2 | 10 | 16,700 | 0 | |
| 1986 | | 73 | 57 | 20 | 19 | -2 | 10 | 7 | 13 | 31,362 | 4 | |
| 1987 | | 73 | 56 | 14 | 14 | -2 | 12 | 3 | 11 | 111,364 | 3 | |
| 1988 | | 73 | 55 | 5 | 5 | 0 | 16 | 1 | 4 | 165,000 | 2 | |
| 1989 | | 73 | 53 | 5 | 3 | 0 | 16 | 1 | 4 | 211,250 | 3 | |
| 1990 | | 73 | 51 | 5 | 5 | +1 | 18 | 4 | 1 | *** | 0 | |
| 1991 | | 73 | 49 | 4 | 4 | 0 | 17 | 1 | 3 | *** | 1 | |
| 1992 | | 73 | 48 | 5 | 5 | -1 | 16 | 1 | 4 | 80,625 | 1 | |
| 1993 | | 73 | 47 | 1 | 1 | 0 | 16 | 1 | 0 | — | 0 | |
| 1994 | | 73 | 49 | 6 | 6 | +1 | 13 | 2 | 4 | 67,000 | 0 | |
| 1995 | | 74 | 50 | 11 | 11 | +2 | 13 | 2 | 9 | 74,645 | 2 | |
| 1996 | | 74 | 52 | 9 | 8 | +3 | 12 | 3 | 6 | 104,750 | 1 | |
| 1997 | 74 | 51 | 4 | 4 | 0 | 12 | 1 | 3 | *** | 1 | | |

Table 1. Permit and Permit Transfer Statistics, 1975-1997 *

| Fishery and Area | Year | Actual Transfer Information | | | | Transfer Survey Information | | | | | | |
|---|--|-----------------------------|------------------------------------|---------------------------|---|--------------------------------------|--------------------------|------------------------------|------------------------------|--------------------------------|---------------------------------------|---|
| | | Total Permanent Permits | Permanent Permits Held by Alaskans | Total Number of Transfers | Number of Permits Involved in Transfers | Change in Residency Due to Transfers | Permits with State Liens | Number of Non-mon. Transfers | Number of Monetary Transfers | Average Price Paid For Permits | Number of Financed Monetary Transfers | |
| Kodiak | 1984 | 5 | 5 | 0 | 0 | 0 | 0 | 0 | 0 | — | 0 | |
| | 1985 | 42 | 39 | 6 | 6 | 0 | 2 | 2 | 4 | 36,250 | 2 | |
| | 1986 | 42 | 39 | 9 | 9 | +1 | 4 | 2 | 7 | 23,286 | 3 | |
| | 1987 | 44 | 40 | 9 | 7 | -1 | 6 | 0 | 9 | 22,611 | 2 | |
| | 1988 | 45 | 42 | 4 | 4 | +1 | 8 | 2 | 2 | *** | 1 | |
| | 1989 | 46 | 44 | 7 | 7 | +1 | 7 | 4 | 3 | *** | 1 | |
| | 1990 | 46 | 42 | 7 | 7 | 0 | 10 | 2 | 5 | 70,500 | 2 | |
| | 1991 | 47 | 42 | 5 | 5 | -1 | 8 | 2 | 3 | *** | 0 | |
| | 1992 | 67 | 57 | 11 | 11 | +2 | 10 | 1 | 10 | 47,600 | 1 | |
| | 1993 | 68 | 55 | 3 | 3 | 0 | 13 | 0 | 3 | *** | 0 | |
| | 1994 | 69 | 58 | 12 | 9 | +1 | 15 | 2 | 10 | 66,680 | 3 | |
| | 1995 | 67 | 54 | 7 | 7 | -2 | 18 | 1 | 6 | 88,000 | 4 | |
| | 1996 | 69 | 54 | 5 | 5 | -2 | 19 | 1 | 4 | 103,000 | 1 | |
| | 1997 | 70 | 54 | 2 | 2 | 0 | 20 | 0 | 2 | *** | 1 | |
| | Herring Beach Seine Norton Sound | 1990 | 2 | 1 | 0 | 0 | 0 | 0 | 0 | 0 | — | 0 |
| | | 1991 | 2 | 1 | 0 | 0 | 0 | 0 | 0 | 0 | — | 0 |
| | | 1992 | 2 | 1 | 0 | 0 | 0 | 0 | 0 | 0 | — | 0 |
| | | 1993 | 2 | 1 | 0 | 0 | 0 | 0 | 0 | 0 | — | 0 |
| | | 1994 | 2 | 1 | 0 | 0 | 0 | 0 | 0 | 0 | — | 0 |
| | | 1995 | 2 | 1 | 0 | 0 | 0 | 0 | 0 | 0 | — | 0 |
| 1996 | | 4 | 2 | 0 | 0 | 0 | 0 | 0 | 0 | — | 0 | |
| 1997 | | 4 | 2 | 0 | 0 | 0 | 0 | 0 | 0 | — | 0 | |
| Herring Seine/Gill Net Kodiak | | 1987 | 1 | 1 | 0 | 0 | 0 | 0 | 0 | 0 | — | 0 |
| | | 1988 | 1 | 1 | 0 | 0 | 0 | 0 | 0 | 0 | — | 0 |
| | 1989 | 1 | 1 | 0 | 0 | 0 | 0 | 0 | 0 | — | 0 | |
| | 1990 | 1 | 1 | 0 | 0 | 0 | 0 | 0 | 0 | — | 0 | |
| | 1991 | 1 | 1 | 0 | 0 | 0 | 0 | 0 | 0 | — | 0 | |
| | 1992 | 2 | 1 | 0 | 0 | 0 | 0 | 0 | 0 | — | 0 | |
| | 1993 | 2 | 1 | 0 | 0 | 0 | 0 | 0 | 0 | — | 0 | |
| | 1994 | 2 | 1 | 0 | 0 | 0 | 0 | 0 | 0 | — | 0 | |
| | 1995 | 2 | 1 | 0 | 0 | 0 | 0 | 0 | 0 | — | 0 | |
| | 1996 | 2 | 1 | 0 | 0 | 0 | 0 | 0 | 0 | — | 0 | |
| | 1997 | 2 | 1 | 0 | 0 | 0 | 0 | 0 | 0 | — | 0 | |
| | Herring Gill Net Southeastern | 1978 | 10 | 10 | 1 | 1 | 0 | 0 | 0 | 0 | — | 0 |
| | | 1979 | 39 | 35 | 2 | 2 | 0 | 1 | 0 | 0 | — | 0 |
| | | 1980 | 44 | 38 | 4 | 4 | 0 | 2 | 0 | 4 | 13,363 | 4 |

Table 1. Permit and Permit Transfer Statistics, 1975-1997 *

| Fishery and Area | Year | Actual Transfer Information | | | | Transfer Survey Information | | | | | | |
|------------------|-----------------|-----------------------------|------------------------------------|---------------------------|---|--------------------------------------|--------------------------|------------------------------|------------------------------|--------------------------------|---------------------------------------|---|
| | | Total Permanent Permits | Permanent Permits Held by Alaskans | Total Number of Transfers | Number of Permits Involved in Transfers | Change in Residency Due to Transfers | Permits with State Liens | Number of Non-mon. Transfers | Number of Monetary Transfers | Average Price Paid For Permits | Number of Financed Monetary Transfers | |
| Southeastern | 1981 | 45 | 39 | 4 | 4 | +1 | 6 | 0 | 4 | 13,875 | 2 | |
| | 1982 | 59 | 47 | 6 | 6 | -1 | 10 | 1 | 5 | 27,500 | 5 | |
| | 1983 | 67 | 47 | 12 | 12 | -6 | 8 | 9 | 3 | *** | 2 | |
| | 1984 | 82 | 62 | 11 | 11 | +1 | 11 | 5 | 6 | 39,583 | 2 | |
| | 1985 | 87 | 61 | 16 | 16 | -5 | 11 | 4 | 12 | 45,000 | 4 | |
| | 1986 | 90 | 61 | 12 | 10 | -1 | 10 | 8 | 4 | 51,250 | 1 | |
| | 1987 | 91 | 60 | 15 | 14 | 0 | 13 | 3 | 12 | 48,542 | 6 | |
| | 1988 | 91 | 58 | 16 | 15 | -2 | 14 | 5 | 11 | 48,827 | 4 | |
| | 1989 | 92 | 60 | 6 | 6 | +1 | 14 | 2 | 4 | 54,750 | 2 | |
| | 1990 | 98 | 64 | 5 | 5 | 0 | 12 | 3 | 2 | *** | 1 | |
| | 1991 | 98 | 66 | 8 | 7 | +1 | 13 | 1 | 7 | 27,214 | 1 | |
| | 1992 | 106 | 70 | 14 | 13 | 0 | 13 | 2 | 12 | 32,388 | 1 | |
| | 1993 | 106 | 70 | 6 | 6 | +1 | 14 | 5 | 1 | *** | 1 | |
| | 1994 | 107 | 68 | 12 | 12 | -1 | 17 | 4 | 8 | 31,813 | 5 | |
| | 1995 | 107 | 71 | 11 | 10 | +4 | 17 | 1 | 10 | 31,800 | 3 | |
| | 1996 | 107 | 70 | 14 | 12 | 0 | 15 | 1 | 13 | 34,923 | 5 | |
| | 1997 | 107 | 71 | 7 | 7 | +2 | 16 | 2 | 5 | 35,100 | 3 | |
| | Prince Wm Sound | 1982 | 24 | 22 | 4 | 4 | +1 | 0 | 1 | 3 | *** | 1 |
| | | 1983 | 24 | 23 | 4 | 4 | +1 | 3 | 0 | 4 | 17,000 | 4 |
| | | 1984 | 24 | 22 | 5 | 5 | 0 | 7 | 1 | 4 | 24,000 | 4 |
| | | 1985 | 24 | 23 | 4 | 3 | +1 | 9 | 1 | 3 | *** | 2 |
| 1986 | | 24 | 22 | 5 | 5 | 0 | 11 | 1 | 4 | 30,500 | 1 | |
| 1987 | | 24 | 22 | 1 | 1 | 0 | 10 | 1 | 0 | — | 0 | |
| 1988 | | 24 | 22 | 2 | 2 | 0 | 10 | 0 | 2 | *** | 1 | |
| 1989 | | 24 | 21 | 3 | 3 | -1 | 10 | 0 | 3 | *** | 0 | |
| 1990 | | 24 | 21 | 0 | 0 | 0 | 8 | 0 | 0 | — | 0 | |
| 1991 | | 24 | 22 | 2 | 2 | +1 | 8 | 0 | 2 | *** | 1 | |
| 1992 | | 24 | 22 | 1 | 1 | 0 | 6 | 0 | 1 | *** | 0 | |
| 1993 | | 24 | 22 | 2 | 2 | 0 | 6 | 0 | 2 | *** | 1 | |
| 1994 | | 24 | 22 | 0 | 0 | 0 | 4 | 0 | 0 | — | 0 | |
| 1995 | | 24 | 21 | 2 | 2 | -1 | 3 | 0 | 2 | *** | 0 | |
| 1996 | | 24 | 21 | 0 | 0 | 0 | 3 | 0 | 0 | — | 0 | |
| 1997 | | 24 | 23 | 3 | 3 | +2 | 4 | 0 | 3 | *** | 1 | |
| Kodiak | | 1984 | 8 | 8 | 1 | 1 | 0 | 0 | 0 | 1 | *** | 1 |
| | | 1985 | 54 | 53 | 12 | 11 | 0 | 3 | 2 | 10 | 15,600 | 4 |
| | | 1986 | 57 | 57 | 12 | 12 | +1 | 11 | 2 | 10 | 16,600 | 4 |
| | 1987 | 59 | 59 | 9 | 8 | 0 | 14 | 3 | 6 | 15,250 | 3 | |
| 1988 | 64 | 64 | 21 | 20 | 0 | 15 | 3 | 18 | 16,511 | 3 | | |

Table 1. Permit and Permit Transfer Statistics, 1975-1997 *

| Fishery and Area | Year | Actual Transfer Information | | | | Transfer Survey Information | | | | | | |
|------------------|---------------|-----------------------------|------------------------------------|---------------------------|---|--------------------------------------|--------------------------|------------------------------|------------------------------|--------------------------------|---------------------------------------|---|
| | | Total Permanent Permits | Permanent Permits Held by Alaskans | Total Number of Transfers | Number of Permits Involved in Transfers | Change in Residency Due to Transfers | Permits with State Liens | Number of Non-mon. Transfers | Number of Monetary Transfers | Average Price Paid For Permits | Number of Financed Monetary Transfers | |
| Kodiak | 1989 | 68 | 66 | 13 | 13 | -1 | 17 | 1 | 12 | 22,813 | 2 | |
| | 1990 | 72 | 69 | 13 | 12 | 0 | 18 | 5 | 8 | 29,000 | 0 | |
| | 1991 | 74 | 69 | 10 | 10 | 0 | 17 | 2 | 8 | 31,125 | 1 | |
| | 1992 | 94 | 90 | 9 | 9 | +2 | 15 | 2 | 7 | 26,886 | 1 | |
| | 1993 | 97 | 92 | 4 | 4 | +1 | 18 | 0 | 4 | 26,000 | 1 | |
| | 1994 | 102 | 92 | 11 | 11 | -3 | 17 | 4 | 7 | 25,429 | 4 | |
| | 1995 | 97 | 89 | 14 | 13 | 0 | 18 | 4 | 10 | 25,050 | 2 | |
| | 1996 | 97 | 86 | 19 | 18 | -2 | 22 | 3 | 16 | 27,725 | 5 | |
| | 1997 | 96 | 85 | 8 | 8 | 0 | 20 | 2 | 6 | 27,000 | 1 | |
| | Nelson Island | 1990 | 77 | 74 | 1 | 1 | 0 | 0 | 1 | 0 | — | 0 |
| | | 1991 | 80 | 77 | 2 | 2 | 0 | 0 | 2 | 0 | — | 0 |
| | | 1992 | 114 | 107 | 0 | 0 | 0 | 0 | 0 | 0 | — | 0 |
| | | 1993 | 134 | 126 | 3 | 3 | 0 | 0 | 3 | 0 | — | 0 |
| 1994 | | 139 | 133 | 5 | 5 | 0 | 0 | 5 | 0 | — | 0 | |
| 1995 | | 140 | 133 | 6 | 6 | 0 | 0 | 4 | 2 | *** | 1 | |
| 1996 | | 140 | 134 | 10 | 10 | +1 | 0 | 7 | 3 | *** | 1 | |
| 1997 | | 140 | 134 | 6 | 6 | 0 | 1 | 5 | 1 | *** | 1 | |
| Numivak Island | | 1990 | 9 | 8 | 0 | 0 | 0 | 0 | 0 | 0 | — | 0 |
| | | 1991 | 42 | 40 | 0 | 0 | 0 | 0 | 0 | 0 | — | 0 |
| | 1992 | 48 | 45 | 1 | 1 | 0 | 0 | 1 | 0 | — | 0 | |
| | 1993 | 50 | 47 | 0 | 0 | 0 | 0 | 0 | 0 | — | 0 | |
| | 1994 | 50 | 47 | 0 | 0 | 0 | 0 | 0 | 0 | — | 0 | |
| | 1995 | 52 | 49 | 0 | 0 | 0 | 0 | 0 | 0 | — | 0 | |
| | 1996 | 51 | 48 | 4 | 4 | 0 | 0 | 3 | 1 | *** | 0 | |
| | 1997 | 50 | 47 | 3 | 3 | 0 | 0 | 3 | 0 | — | 0 | |
| | Lower Yukon | 1990 | 66 | 66 | 3 | 2 | 0 | 0 | 3 | 0 | — | 0 |
| | | 1991 | 70 | 70 | 5 | 5 | 0 | 0 | 5 | 0 | — | 0 |
| 1992 | | 78 | 78 | 3 | 3 | 0 | 0 | 3 | 0 | — | 0 | |
| 1993 | | 77 | 77 | 4 | 4 | 0 | 0 | 4 | 0 | — | 0 | |
| 1994 | | 77 | 77 | 2 | 2 | 0 | 0 | 2 | 0 | — | 0 | |
| 1995 | | 72 | 72 | 3 | 3 | 0 | 0 | 3 | 0 | — | 0 | |
| 1996 | | 72 | 72 | 3 | 3 | 0 | 0 | 3 | 0 | — | 0 | |
| 1997 | | 71 | 71 | 6 | 6 | 0 | 0 | 6 | 0 | — | 0 | |
| Norton Sound | | 1990 | 211 | 162 | 31 | 29 | -7 | 0 | 5 | 26 | 29,731 | 2 |
| | | 1991 | 229 | 178 | 35 | 33 | +1 | 6 | 8 | 27 | 35,370 | 3 |

Table 1. Permit and Permit Transfer Statistics, 1975-1997 *

| Fishery and Area | Year | Actual Transfer Information | | | | Transfer Survey Information | | | | | | |
|---|------|-----------------------------|------------------------------------|---------------------------|---|--------------------------------------|--------------------------|------------------------------|------------------------------|--------------------------------|---------------------------------------|--|
| | | Total Permanent Permits | Permanent Permits Held by Alaskans | Total Number of Transfers | Number of Permits Involved in Transfers | Change in Residency Due to Transfers | Permits with State Liens | Number of Non-mon. Transfers | Number of Monetary Transfers | Average Price Paid For Permits | Number of Financed Monetary Transfers | |
| Norton Sound | 1992 | 233 | 181 | 14 | 14 | 0 | 9 | 6 | 8 | 27,813 | 2 | |
| | 1993 | 238 | 187 | 11 | 11 | +1 | 9 | 7 | 4 | 22,250 | 1 | |
| | 1994 | 241 | 189 | 21 | 19 | -1 | 8 | 13 | 8 | 14,000 | 1 | |
| | 1995 | 240 | 182 | 26 | 24 | -5 | 10 | 6 | 20 | 13,550 | 0 | |
| | 1996 | 243 | 170 | 64 | 54 | -15 | 19 | 16 | 48 | 21,818 | 11 | |
| | 1997 | 245 | 171 | 19 | 18 | +1 | 21 | 5 | 14 | 18,786 | 5 | |
| | | | | | | | | | | | | |
| King/Tanner Crab Pot SE Red/Blue King | 1989 | 1 | 1 | 0 | 0 | 0 | 0 | 0 | 0 | — | 0 | |
| | 1990 | 1 | 1 | 0 | 0 | 0 | 0 | 0 | 0 | — | 0 | |
| | 1991 | 1 | 1 | 0 | 0 | 0 | 0 | 0 | 0 | — | 0 | |
| | 1992 | 1 | 1 | 0 | 0 | 0 | 0 | 0 | 0 | — | 0 | |
| | 1993 | 1 | 1 | 1 | 1 | 0 | 0 | 1 | 0 | — | 0 | |
| | 1994 | 1 | 1 | 0 | 0 | 0 | 0 | 0 | 0 | — | 0 | |
| | 1995 | 1 | 1 | 0 | 0 | 0 | 1 | 0 | 0 | — | 0 | |
| | 1996 | 1 | 1 | 0 | 0 | 0 | 1 | 0 | 0 | — | 0 | |
| | 1997 | 1 | 1 | 0 | 0 | 0 | 1 | 0 | 0 | — | 0 | |
| | | | | | | | | | | | | |
| | | | | | | | | | | | | |
| SE R/B/Brn King | 1992 | 1 | 1 | 0 | 0 | 0 | 0 | 0 | 0 | — | 0 | |
| | 1993 | 1 | 1 | 0 | 0 | 0 | 0 | 0 | 0 | — | 0 | |
| | 1994 | 1 | 1 | 0 | 0 | 0 | 0 | 0 | 0 | — | 0 | |
| | 1995 | 1 | 1 | 0 | 0 | 0 | 0 | 0 | 0 | — | 0 | |
| | 1996 | 1 | 1 | 0 | 0 | 0 | 0 | 0 | 0 | — | 0 | |
| | 1997 | 1 | 1 | 0 | 0 | 0 | 0 | 0 | 0 | — | 0 | |
| | | | | | | | | | | | | |
| | | | | | | | | | | | | |
| SE Brn King | 1990 | 1 | 1 | 0 | 0 | 0 | 0 | 0 | 0 | — | 0 | |
| | 1991 | 1 | 1 | 0 | 0 | 0 | 0 | 0 | 0 | — | 0 | |
| | 1992 | 1 | 1 | 0 | 0 | 0 | 0 | 0 | 0 | — | 0 | |
| | 1993 | 2 | 2 | 0 | 0 | 0 | 0 | 0 | 0 | — | 0 | |
| | 1994 | 2 | 2 | 0 | 0 | 0 | 0 | 0 | 0 | — | 0 | |
| | 1995 | 2 | 2 | 0 | 0 | 0 | 0 | 0 | 0 | — | 0 | |
| | 1996 | 2 | 2 | 0 | 0 | 0 | 0 | 0 | 0 | — | 0 | |
| 1997 | 2 | 2 | 1 | 1 | 0 | 1 | 0 | 1 | *** | 1 | | |
| SE R/B King + Tanner | 1989 | 4 | 4 | 0 | 0 | 0 | 0 | 0 | 0 | — | 0 | |
| | 1990 | 6 | 6 | 1 | 1 | 0 | 1 | 0 | 1 | *** | 1 | |
| | 1991 | 7 | 7 | 1 | 1 | 0 | 2 | 0 | 1 | *** | 1 | |
| | 1992 | 8 | 8 | 0 | 0 | 0 | 2 | 0 | 0 | — | 0 | |
| | 1993 | 8 | 8 | 0 | 0 | 0 | 2 | 0 | 0 | — | 0 | |

Table 1. Permit and Permit Transfer Statistics, 1975-1997 *

| Fishery and Area | Year | Actual Transfer Information | | | | Transfer Survey Information | | | | | |
|--------------------------------------|------|-----------------------------|------------------------------------|---------------------------|---|--------------------------------------|--------------------------|------------------------------|------------------------------|--------------------------------|---------------------------------------|
| | | Total Permanent Permits | Permanent Permits Held by Alaskans | Total Number of Transfers | Number of Permits Involved in Transfers | Change in Residency Due to Transfers | Permits with State Liens | Number of Non-mon. Transfers | Number of Monetary Transfers | Average Price Paid For Permits | Number of Financed Monetary Transfers |
| SE R/B King + Tanner | 1994 | 8 | 8 | 3 | 3 | 0 | 4 | 0 | 3 | *** | 2 |
| | 1995 | 8 | 8 | 0 | 0 | 0 | 6 | 0 | 0 | — | 0 |
| | 1996 | 8 | 8 | 0 | 0 | 0 | 6 | 0 | 0 | — | 0 |
| | 1997 | 8 | 8 | 0 | 0 | 0 | 6 | 0 | 0 | — | 0 |
| | 1989 | 5 | 5 | 0 | 0 | 0 | 0 | 0 | 0 | — | 0 |
| | 1990 | 14 | 14 | 1 | 1 | 0 | 1 | 0 | 1 | *** | 1 |
| | 1991 | 14 | 14 | 1 | 1 | 0 | 3 | 0 | 1 | *** | 0 |
| | 1992 | 14 | 14 | 1 | 1 | 0 | 3 | 0 | 1 | *** | 0 |
| SE All King + Tanner | 1993 | 14 | 14 | 2 | 2 | 0 | 3 | 2 | 0 | — | 0 |
| | 1994 | 14 | 14 | 2 | 2 | +1 | 4 | 0 | 2 | *** | 1 |
| | 1995 | 14 | 14 | 2 | 2 | 0 | 3 | 0 | 2 | *** | 1 |
| | 1996 | 14 | 14 | 0 | 0 | 0 | 3 | 0 | 0 | — | 0 |
| | 1997 | 14 | 14 | 0 | 0 | 0 | 3 | 0 | 0 | — | 0 |
| | 1989 | 1 | 1 | 0 | 0 | 0 | 0 | 0 | 0 | — | 0 |
| | 1990 | 3 | 3 | 1 | 1 | 0 | 0 | 0 | 1 | *** | 0 |
| | 1991 | 3 | 3 | 0 | 0 | 0 | 0 | 0 | 0 | — | 0 |
| SE Tanner Crab | 1992 | 3 | 3 | 0 | 0 | 0 | 0 | 0 | 0 | — | 0 |
| | 1993 | 4 | 4 | 2 | 2 | +1 | 1 | 1 | 1 | *** | 1 |
| | 1994 | 4 | 4 | 1 | 1 | 0 | 1 | 1 | 0 | — | 0 |
| | 1995 | 4 | 4 | 0 | 0 | 0 | 1 | 0 | 0 | — | 0 |
| | 1996 | 4 | 4 | 1 | 1 | 0 | 2 | 0 | 1 | *** | 0 |
| | 1997 | 4 | 4 | 0 | 0 | 0 | 2 | 0 | 0 | — | 0 |
| | 1992 | 255 | 253 | 2 | 2 | 0 | 1 | 2 | 0 | — | 0 |
| | 1993 | 272 | 270 | 3 | 3 | 0 | 1 | 2 | 1 | *** | 0 |
| Herring Spawn on Kelp Bristol Bay | 1994 | 281 | 278 | 12 | 12 | 0 | 1 | 8 | 4 | 5,375 | 0 |
| | 1995 | 282 | 279 | 14 | 14 | 0 | 1 | 9 | 5 | 4,052 | 1 |
| | 1996 | 282 | 277 | 21 | 19 | -1 | 3 | 15 | 6 | 4,500 | 1 |
| | 1997 | 282 | 276 | 13 | 13 | 0 | 3 | 9 | 4 | 5,000 | 0 |
| | 1988 | 128 | 97 | 36 | 34 | +4 | 3 | 4 | 32 | 24,519 | 7 |
| Herring Pound Prince Wm Sound | 1989 | 128 | 100 | 14 | 14 | +5 | 8 | 1 | 13 | 47,884 | 4 |
| | 1990 | 128 | 100 | 4 | 4 | -1 | 9 | 2 | 2 | *** | 1 |
| | 1991 | 128 | 102 | 12 | 12 | +2 | 12 | 0 | 12 | 61,375 | 1 |
| | 1992 | 128 | 105 | 8 | 8 | 0 | 19 | 2 | 6 | 57,833 | 3 |
| | 1993 | 128 | 102 | 10 | 10 | 0 | 23 | 2 | 8 | 40,675 | 1 |

Table 1. Permit and Permit Transfer Statistics, 1975-1997 *

| Fishery and Area | Year | Actual Transfer Information | | | | Transfer Survey Information | | | | | |
|---|------|-----------------------------|------------------------------------|---------------------------|---|--------------------------------------|--------------------------|------------------------------|------------------------------|--------------------------------|---------------------------------------|
| | | Total Permanent Permits | Permanent Permits Held by Alaskans | Total Number of Transfers | Number of Permits Involved in Transfers | Change in Residency Due to Transfers | Permits with State Liens | Number of Non-mon. Transfers | Number of Monetary Transfers | Average Price Paid For Permits | Number of Financed Monetary Transfers |
| Prince Wm Sound | 1994 | 128 | 101 | 7 | 7 | 0 | 25 | 2 | 5 | 28,800 | 1 |
| | 1995 | 128 | 102 | 3 | 3 | +1 | 25 | 1 | 2 | *** | 0 |
| | 1996 | 128 | 97 | 20 | 19 | -2 | 23 | 1 | 19 | 23,664 | 2 |
| | 1997 | 128 | 95 | 12 | 12 | +1 | 27 | 5 | 7 | 31,571 | 3 |
| Salmon Purse Seine Southeastern | 1975 | 398 | 198 | 51 | 51 | -4 | 0 | 8 | 15 | 10,633 | 12 |
| | 1976 | 409 | 202 | 24 | 21 | -3 | 0 | 1 | 9 | 9,222 | 5 |
| | 1977 | 411 | 196 | 53 | 50 | -6 | 0 | 6 | 21 | 16,667 | 14 |
| | 1978 | 413 | 193 | 56 | 50 | -8 | 0 | 5 | 16 | 30,929 | 13 |
| | 1979 | 413 | 189 | 38 | 36 | -2 | 1 | 3 | 12 | 39,917 | 10 |
| | 1980 | 414 | 193 | 35 | 34 | +3 | 13 | 12 | 15 | 39,600 | 9 |
| | 1981 | 414 | 194 | 35 | 34 | 0 | 16 | 12 | 23 | 40,652 | 12 |
| | 1982 | 414 | 186 | 31 | 31 | -6 | 24 | 10 | 21 | 40,286 | 11 |
| | 1983 | 416 | 187 | 34 | 32 | -1 | 27 | 14 | 20 | 38,531 | 10 |
| | 1984 | 417 | 185 | 55 | 52 | -1 | 33 | 17 | 38 | 40,884 | 18 |
| | 1985 | 416 | 181 | 36 | 33 | -6 | 39 | 9 | 27 | 37,907 | 12 |
| | 1986 | 416 | 184 | 26 | 23 | +2 | 38 | 8 | 18 | 34,403 | 3 |
| | 1987 | 416 | 182 | 36 | 33 | +3 | 43 | 6 | 30 | 40,832 | 10 |
| | 1988 | 416 | 181 | 30 | 29 | -3 | 44 | 12 | 18 | 65,833 | 5 |
| | 1989 | 416 | 182 | 36 | 36 | +5 | 47 | 7 | 29 | 78,448 | 13 |
| | 1990 | 417 | 180 | 26 | 26 | -2 | 45 | 8 | 18 | 104,667 | 4 |
| | 1991 | 417 | 181 | 33 | 32 | +2 | 48 | 14 | 19 | 92,684 | 6 |
| | 1992 | 417 | 179 | 28 | 26 | -2 | 51 | 11 | 16 | 64,969 | 5 |
| | 1993 | 417 | 179 | 33 | 30 | +2 | 50 | 17 | 16 | 79,625 | 4 |
| | 1994 | 417 | 181 | 41 | 39 | +2 | 50 | 16 | 25 | 73,616 | 8 |
| | 1995 | 417 | 184 | 22 | 20 | +1 | 57 | 5 | 17 | 70,912 | 7 |
| | 1996 | 416 | 185 | 18 | 18 | +3 | 58 | 2 | 16 | 61,188 | 2 |
| | 1997 | 415 | 190 | 28 | 27 | +4 | 62 | 8 | 20 | 50,033 | 5 |
| Prince Wm Sound | 1975 | 210 | 164 | 19 | 17 | +2 | 0 | 0 | 7 | 8,000 | 5 |
| | 1976 | 247 | 194 | 42 | 36 | -5 | 0 | 5 | 11 | 10,700 | 6 |
| | 1977 | 255 | 198 | 28 | 24 | -3 | 0 | 1 | 6 | 29,800 | 5 |
| | 1978 | 257 | 193 | 36 | 32 | -5 | 0 | 3 | 10 | 24,272 | 4 |
| | 1979 | 258 | 192 | 47 | 41 | -3 | 5 | 3 | 13 | 33,846 | 5 |
| | 1980 | 258 | 197 | 29 | 28 | +1 | 15 | 12 | 14 | 40,154 | 6 |
| | 1981 | 259 | 190 | 34 | 34 | -5 | 33 | 18 | 16 | 69,531 | 10 |
| 1982 | 259 | 188 | 26 | 26 | +1 | 41 | 12 | 14 | 101,690 | 13 | |
| 1983 | 259 | 187 | 29 | 28 | -1 | 53 | 12 | 17 | 142,384 | 14 | |

Table 1. Permit and Permit Transfer Statistics, 1975-1997 *

| Fishery and Area | Year | Actual Transfer Information | | | | Transfer Survey Information | | | | | | |
|------------------|------------|-----------------------------|------------------------------------|---------------------------|---|--------------------------------------|--------------------------|------------------------------|------------------------------|--------------------------------|---------------------------------------|---|
| | | Total Permanent Permits | Permanent Permits Held by Alaskans | Total Number of Transfers | Number of Permits Involved in Transfers | Change in Residency Due to Transfers | Permits with State Liens | Number of Non-mon. Transfers | Number of Monetary Transfers | Average Price Paid For Permits | Number of Financed Monetary Transfers | |
| Prince Wm Sound | 1984 | 261 | 187 | 23 | 22 | - 3 | 62 | 12 | 11 | 131,695 | 9 | |
| | 1985 | 261 | 191 | 27 | 25 | + 7 | 68 | 11 | 16 | 104,469 | 7 | |
| | 1986 | 262 | 190 | 26 | 24 | + 1 | 70 | 13 | 13 | 99,400 | 9 | |
| | 1987 | 262 | 191 | 36 | 35 | + 2 | 72 | 15 | 21 | 90,000 | 16 | |
| | 1988 | 263 | 184 | 32 | 30 | - 3 | 69 | 13 | 19 | 135,158 | 7 | |
| | 1989 | 263 | 184 | 15 | 15 | 0 | 72 | 9 | 6 | 236,333 | 2 | |
| | 1990 | 264 | 184 | 16 | 15 | 0 | 71 | 11 | 5 | 228,000 | 3 | |
| | 1991 | 264 | 181 | 21 | 20 | - 3 | 65 | 11 | 10 | 215,500 | 1 | |
| | 1992 | 265 | 189 | 25 | 25 | + 4 | 69 | 6 | 19 | 98,347 | 5 | |
| | 1993 | 265 | 191 | 20 | 20 | + 1 | 65 | 10 | 10 | 88,850 | 5 | |
| | 1994 | 266 | 192 | 26 | 26 | - 1 | 59 | 9 | 17 | 35,265 | 3 | |
| | 1995 | 266 | 189 | 20 | 18 | + 1 | 62 | 12 | 8 | 75,000 | 2 | |
| | 1996 | 266 | 190 | 8 | 8 | + 1 | 61 | 2 | 6 | 33,833 | 1 | |
| | 1997 | 266 | 193 | 20 | 19 | + 4 | 63 | 3 | 17 | 36,382 | 3 | |
| | Cook Inlet | 1975 | 49 | 49 | 3 | 2 | 0 | 0 | 0 | 0 | — | 0 |
| | | 1976 | 63 | 62 | 7 | 6 | - 1 | 0 | 1 | 2 | *** | 2 |
| | | 1977 | 72 | 72 | 12 | 11 | 0 | 0 | 2 | 4 | 10,625 | 2 |
| | | 1978 | 74 | 74 | 10 | 9 | 0 | 0 | 2 | 5 | 40,000 | 4 |
| | | 1979 | 75 | 74 | 9 | 8 | 0 | 1 | 2 | 1 | *** | 1 |
| | | 1980 | 75 | 73 | 12 | 12 | - 1 | 5 | 4 | 7 | 82,786 | 3 |
| 1981 | | 75 | 73 | 10 | 9 | 0 | 10 | 3 | 7 | 83,714 | 5 | |
| 1982 | | 77 | 76 | 11 | 11 | 0 | 16 | 6 | 5 | 84,267 | 5 | |
| 1983 | | 78 | 78 | 15 | 14 | + 1 | 23 | 7 | 8 | 90,000 | 7 | |
| 1984 | | 78 | 77 | 10 | 8 | - 1 | 24 | 9 | 1 | *** | 1 | |
| 1985 | | 80 | 79 | 5 | 5 | 0 | 26 | 1 | 4 | 58,375 | 3 | |
| 1986 | | 82 | 81 | 9 | 9 | 0 | 27 | 4 | 5 | 60,000 | 4 | |
| 1987 | | 82 | 81 | 16 | 15 | 0 | 27 | 5 | 11 | 60,455 | 6 | |
| 1988 | | 82 | 81 | 14 | 14 | 0 | 31 | 5 | 9 | 66,089 | 6 | |
| 1989 | | 82 | 81 | 10 | 9 | 0 | 32 | 7 | 3 | *** | 2 | |
| 1990 | | 82 | 81 | 6 | 5 | 0 | 32 | 2 | 4 | 177,500 | 0 | |
| 1991 | | 82 | 80 | 3 | 3 | 0 | 29 | 1 | 2 | *** | 0 | |
| 1992 | | 82 | 79 | 4 | 4 | 0 | 30 | 3 | 1 | *** | 0 | |
| 1993 | | 83 | 78 | 6 | 6 | 0 | 29 | 6 | 0 | — | 0 | |
| 1994 | | 83 | 77 | 2 | 2 | 0 | 29 | 2 | 0 | — | 0 | |
| 1995 | 83 | 75 | 7 | 7 | 0 | 28 | 6 | 1 | *** | 0 | | |
| 1996 | 84 | 77 | 7 | 6 | + 1 | 26 | 3 | 4 | 37,355 | 3 | | |
| 1997 | 84 | 78 | 2 | 2 | + 1 | 25 | 0 | 2 | *** | 0 | | |

Table 1. Permit and Permit Transfer Statistics, 1975-1997 *

| Fishery and Area | Year | Actual Transfer Information | | | | | Transfer Survey Information | | | | |
|------------------|------|-----------------------------|------------------------------------|---------------------------|---|--------------------------------------|-----------------------------|------------------------------|------------------------------|--------------------------------|---------------------------------------|
| | | Total Permanent Permits | Permanent Permits Held by Alaskans | Total Number of Transfers | Number of Permits Involved in Transfers | Change in Residency Due to Transfers | Permits with State Liens | Number of Non-mon. Transfers | Number of Monetary Transfers | Average Price Paid For Permits | Number of Financed Monetary Transfers |
| Kodiak | 1975 | 334 | 242 | 22 | 22 | +4 | 0 | 4 | 7 | 4,571 | 5 |
| | 1976 | 358 | 262 | 42 | 40 | -1 | 0 | 6 | 13 | 9,736 | 5 |
| | 1977 | 365 | 269 | 72 | 62 | +2 | 0 | 13 | 19 | 17,611 | 7 |
| | 1978 | 371 | 273 | 60 | 52 | +4 | 0 | 11 | 9 | 47,611 | 9 |
| | 1979 | 374 | 272 | 57 | 41 | -2 | 3 | 5 | 12 | 66,045 | 6 |
| | 1980 | 375 | 275 | 35 | 34 | +4 | 24 | 5 | 24 | 70,688 | 15 |
| | 1981 | 375 | 280 | 37 | 36 | +7 | 50 | 16 | 20 | 68,625 | 15 |
| | 1982 | 376 | 284 | 43 | 42 | +4 | 65 | 14 | 29 | 75,511 | 28 |
| | 1983 | 377 | 289 | 47 | 47 | +4 | 80 | 19 | 28 | 69,903 | 20 |
| | 1984 | 378 | 286 | 29 | 29 | -2 | 90 | 12 | 17 | 61,265 | 7 |
| | 1985 | 379 | 288 | 43 | 39 | 0 | 99 | 20 | 23 | 46,337 | 9 |
| | 1986 | 380 | 293 | 52 | 46 | +5 | 102 | 25 | 27 | 36,151 | 12 |
| | 1987 | 381 | 292 | 61 | 53 | +1 | 104 | 23 | 38 | 44,128 | 13 |
| | 1988 | 382 | 288 | 55 | 50 | -5 | 110 | 21 | 34 | 66,491 | 15 |
| | 1989 | 382 | 287 | 38 | 37 | 0 | 112 | 15 | 22 | 132,795 | 8 |
| | 1990 | 382 | 283 | 25 | 25 | 0 | 113 | 8 | 17 | 146,588 | 4 |
| | 1991 | 383 | 282 | 22 | 22 | -1 | 109 | 7 | 15 | 119,170 | 3 |
| | 1992 | 383 | 279 | 33 | 33 | +4 | 107 | 13 | 20 | 69,850 | 5 |
| | 1993 | 383 | 282 | 29 | 29 | +5 | 102 | 12 | 17 | 60,897 | 8 |
| | 1994 | 383 | 287 | 33 | 32 | +7 | 99 | 8 | 25 | 46,518 | 3 |
| | 1995 | 383 | 288 | 33 | 32 | +1 | 111 | 9 | 24 | 50,375 | 10 |
| | 1996 | 383 | 286 | 16 | 16 | -1 | 115 | 4 | 12 | 46,333 | 4 |
| | 1997 | 383 | 285 | 22 | 21 | 0 | 114 | 8 | 14 | 39,786 | 2 |
| Chignik | 1975 | 85 | 64 | 4 | 4 | 0 | 0 | 1 | 1 | *** | 1 |
| | 1976 | 90 | 72 | 4 | 4 | 0 | 0 | 2 | 0 | — | 0 |
| | 1977 | 90 | 73 | 6 | 5 | +1 | 0 | 2 | 1 | *** | 1 |
| | 1978 | 90 | 76 | 3 | 3 | 0 | 0 | 1 | 0 | — | 0 |
| | 1979 | 90 | 76 | 1 | 1 | +1 | 0 | 0 | 0 | — | 0 |
| | 1980 | 90 | 76 | 1 | 1 | 0 | 2 | 1 | 0 | — | 0 |
| | 1981 | 90 | 74 | 5 | 4 | -1 | 5 | 2 | 3 | *** | 3 |
| | 1982 | 90 | 74 | 7 | 6 | 0 | 5 | 5 | 2 | *** | 1 |
| | 1983 | 90 | 74 | 4 | 4 | 0 | 9 | 2 | 2 | *** | 1 |
| | 1984 | 90 | 75 | 9 | 8 | 0 | 13 | 5 | 4 | 322,500 | 3 |
| | 1985 | 90 | 77 | 6 | 6 | +1 | 15 | 3 | 3 | *** | 2 |
| | 1986 | 90 | 77 | 5 | 5 | +1 | 16 | 3 | 2 | *** | 1 |
| | 1987 | 90 | 76 | 0 | 0 | 0 | 17 | 0 | 0 | — | 0 |
| | 1988 | 90 | 75 | 4 | 3 | -1 | 19 | 3 | 1 | *** | 1 |
| | 1989 | 90 | 74 | 4 | 4 | -1 | 20 | 2 | 2 | *** | 1 |

Table 1. Permit and Permit Transfer Statistics, 1975-1997 *

| Fishery and Area | Year | Actual Transfer Information | | | | Transfer Survey Information | | | | | | |
|------------------------------|------------------|-----------------------------|------------------------------------|---------------------------|---|--------------------------------------|--------------------------|------------------------------|------------------------------|--------------------------------|---------------------------------------|---|
| | | Total Permanent Permits | Permanent Permits Held by Alaskans | Total Number of Transfers | Number of Permits Involved in Transfers | Change in Residency Due to Transfers | Permits with State Liens | Number of Non-mon. Transfers | Number of Monetary Transfers | Average Price Paid For Permits | Number of Financed Monetary Transfers | |
| Chignik | 1990 | 90 | 74 | 4 | 4 | +1 | 23 | 2 | 2 | *** | 1 | |
| | 1991 | 90 | 72 | 4 | 4 | 0 | 21 | 2 | 2 | *** | 1 | |
| | 1992 | 90 | 73 | 2 | 2 | +1 | 21 | 0 | 2 | *** | 0 | |
| | 1993 | 90 | 72 | 7 | 7 | 0 | 20 | 5 | 2 | *** | 0 | |
| | 1994 | 90 | 71 | 8 | 8 | -1 | 19 | 5 | 3 | *** | 2 | |
| | 1995 | 90 | 71 | 6 | 6 | +1 | 22 | 0 | 6 | 228,333 | 4 | |
| | 1996 | 90 | 70 | 6 | 6 | -1 | 25 | 2 | 4 | 194,500 | 3 | |
| | 1997 | 90 | 75 | 9 | 9 | +4 | 29 | 3 | 6 | 188,333 | 5 | |
| | Alaska Peninsula | 1975 | 108 | 95 | 3 | 3 | 0 | 0 | 0 | 0 | — | 0 |
| | | 1976 | 112 | 99 | 6 | 5 | 0 | 0 | 3 | 0 | — | 0 |
| 1977 | | 113 | 100 | 15 | 13 | 0 | 0 | 4 | 1 | *** | 0 | |
| 1978 | | 115 | 104 | 12 | 12 | +1 | 0 | 2 | 3 | *** | 2 | |
| 1979 | | 117 | 102 | 13 | 12 | -3 | 0 | 3 | 5 | 66,000 | 1 | |
| 1980 | | 117 | 97 | 19 | 17 | -3 | 3 | 14 | 2 | *** | 1 | |
| 1981 | | 117 | 98 | 9 | 9 | +1 | 7 | 7 | 2 | *** | 2 | |
| 1982 | | 118 | 99 | 5 | 5 | 0 | 6 | 3 | 2 | *** | 0 | |
| 1983 | | 118 | 98 | 22 | 19 | -2 | 7 | 16 | 6 | 195,000 | 5 | |
| 1984 | | 118 | 98 | 8 | 8 | +1 | 11 | 5 | 3 | *** | 3 | |
| 1985 | | 119 | 100 | 3 | 3 | 0 | 15 | 3 | 0 | — | 0 | |
| 1986 | | 119 | 99 | 10 | 10 | -1 | 17 | 6 | 4 | 251,250 | 2 | |
| 1987 | | 119 | 96 | 10 | 10 | -2 | 18 | 6 | 4 | 145,000 | 2 | |
| 1988 | | 119 | 93 | 13 | 13 | -2 | 18 | 9 | 4 | 149,625 | 0 | |
| 1989 | | 119 | 92 | 5 | 5 | -1 | 19 | 3 | 2 | *** | 0 | |
| 1990 | | 119 | 92 | 5 | 5 | -1 | 25 | 3 | 2 | *** | 1 | |
| 1991 | | 119 | 92 | 5 | 3 | 0 | 26 | 5 | 0 | — | 0 | |
| 1992 | | 119 | 91 | 12 | 11 | -1 | 24 | 6 | 6 | 191,717 | 0 | |
| 1993 | | 120 | 91 | 8 | 8 | -1 | 25 | 6 | 2 | *** | 0 | |
| 1994 | | 120 | 93 | 10 | 9 | +1 | 26 | 7 | 3 | *** | 1 | |
| 1995 | 120 | 93 | 3 | 3 | +1 | 30 | 2 | 1 | *** | 0 | | |
| 1996 | 120 | 89 | 9 | 8 | -2 | 33 | 7 | 2 | *** | 1 | | |
| 1997 | 120 | 89 | 2 | 2 | -1 | 36 | 2 | 0 | — | 0 | | |
| Salmon Beach Seine Kodiak | 1975 | 21 | 20 | 0 | 0 | 0 | 0 | 0 | 0 | — | 0 | |
| | 1976 | 23 | 22 | 2 | 2 | 0 | 0 | 0 | 0 | — | 0 | |
| | 1977 | 30 | 27 | 10 | 8 | -1 | 0 | 1 | 3 | *** | 2 | |
| | 1978 | 33 | 30 | 16 | 14 | 0 | 0 | 4 | 3 | *** | 1 | |
| | 1979 | 33 | 30 | 7 | 7 | -1 | 0 | 1 | 4 | 36,500 | 3 | |
| | 1980 | 34 | 31 | 9 | 9 | -1 | 0 | 1 | 4 | 42,625 | 2 | |

Table 1. Permit and Permit Transfer Statistics, 1975-1997 *

| Fishery and Area | Year | Actual Transfer Information | | | | Transfer Survey Information | | | | | | |
|------------------|---------------------------------------|-----------------------------|------------------------------------|---------------------------|---|--------------------------------------|--------------------------|------------------------------|------------------------------|--------------------------------|---------------------------------------|----|
| | | Total Permanent Permits | Permanent Permits Held by Alaskans | Total Number of Transfers | Number of Permits Involved in Transfers | Change in Residency Due to Transfers | Permits with State Liens | Number of Non-mon. Transfers | Number of Monetary Transfers | Average Price Paid For Permits | Number of Financed Monetary Transfers | |
| Kodiak | 1981 | 34 | 32 | 10 | 8 | 0 | 4 | 3 | 7 | 42,429 | 5 | |
| | 1982 | 34 | 32 | 4 | 4 | 0 | 3 | 2 | 2 | *** | 2 | |
| | 1983 | 35 | 32 | 5 | 5 | 0 | 6 | 2 | 3 | *** | 3 | |
| | 1984 | 35 | 32 | 3 | 3 | 0 | 7 | 1 | 2 | *** | 1 | |
| | 1985 | 34 | 30 | 6 | 5 | -1 | 7 | 2 | 4 | 23,750 | 1 | |
| | 1986 | 34 | 30 | 3 | 3 | 0 | 6 | 1 | 2 | *** | 0 | |
| | 1987 | 33 | 31 | 7 | 7 | 0 | 7 | 2 | 5 | 25,000 | 3 | |
| | 1988 | 33 | 29 | 8 | 8 | -2 | 5 | 3 | 5 | 28,400 | 0 | |
| | 1989 | 33 | 29 | 9 | 9 | -1 | 4 | 3 | 6 | 34,833 | 2 | |
| | 1990 | 33 | 29 | 3 | 3 | +1 | 3 | 0 | 3 | *** | 0 | |
| | 1991 | 33 | 30 | 3 | 2 | 0 | 4 | 1 | 2 | *** | 0 | |
| | 1992 | 33 | 30 | 4 | 4 | 0 | 3 | 3 | 1 | *** | 0 | |
| | 1993 | 34 | 31 | 2 | 2 | 0 | 3 | 2 | 0 | — | 0 | |
| | 1994 | 34 | 31 | 4 | 4 | +1 | 3 | 2 | 2 | *** | 0 | |
| | 1995 | 34 | 31 | 5 | 5 | 0 | 3 | 4 | 1 | *** | 0 | |
| | 1996 | 34 | 31 | 2 | 2 | 0 | 3 | 0 | 2 | *** | 0 | |
| | 1997 | 34 | 31 | 1 | 1 | 0 | 3 | 1 | 0 | — | 0 | |
| | Salmon Drift Gill Net Southeastern | 1975 | 431 | 293 | 94 | 89 | +6 | 0 | 9 | 28 | 9,211 | 21 |
| | | 1976 | 449 | 313 | 59 | 48 | +4 | 0 | 6 | 12 | 10,213 | 7 |
| | | 1977 | 460 | 323 | 71 | 68 | +6 | 0 | 11 | 25 | 16,262 | 17 |
| 1978 | | 463 | 329 | 81 | 67 | +5 | 0 | 11 | 26 | 34,604 | 18 | |
| 1979 | | 464 | 324 | 72 | 60 | -6 | 10 | 8 | 19 | 41,763 | 14 | |
| 1980 | | 464 | 322 | 59 | 56 | -1 | 35 | 22 | 35 | 41,714 | 21 | |
| 1981 | | 464 | 319 | 66 | 61 | -1 | 56 | 25 | 40 | 43,920 | 30 | |
| 1982 | | 466 | 315 | 74 | 66 | -10 | 68 | 33 | 41 | 38,495 | 30 | |
| 1983 | | 467 | 322 | 50 | 45 | 0 | 82 | 13 | 37 | 34,508 | 23 | |
| 1984 | | 467 | 316 | 64 | 60 | -9 | 84 | 21 | 43 | 32,898 | 14 | |
| 1985 | | 468 | 320 | 61 | 59 | +1 | 18 | 18 | 43 | 35,623 | 21 | |
| 1986 | | 468 | 326 | 71 | 65 | +1 | 107 | 26 | 45 | 44,849 | 22 | |
| 1987 | | 468 | 327 | 52 | 48 | -2 | 108 | 18 | 34 | 55,632 | 16 | |
| 1988 | | 468 | 316 | 50 | 41 | -10 | 107 | 20 | 30 | 75,958 | 12 | |
| 1989 | | 468 | 309 | 25 | 23 | -4 | 114 | 9 | 16 | 125,625 | 9 | |
| 1990 | | 468 | 306 | 45 | 43 | -3 | 116 | 17 | 28 | 106,500 | 7 | |
| 1991 | | 468 | 316 | 46 | 44 | +8 | 120 | 13 | 33 | 82,773 | 10 | |
| 1992 | | 468 | 320 | 42 | 37 | +2 | 122 | 13 | 29 | 71,276 | 8 | |
| 1993 | | 468 | 326 | 44 | 42 | +5 | 126 | 17 | 27 | 80,519 | 10 | |
| 1994 | | 469 | 329 | 44 | 44 | 0 | 116 | 13 | 31 | 62,929 | 8 | |

Table 1. Permit and Permit Transfer Statistics, 1975-1997 *

| Fishery and Area | Year | Actual Transfer Information | | | | Transfer Survey Information | | | | | | |
|------------------|------------|-----------------------------|------------------------------------|---------------------------|---|--------------------------------------|--------------------------|------------------------------|------------------------------|--------------------------------|---------------------------------------|----|
| | | Total Permanent Permits | Permanent Permits Held by Alaskans | Total Number of Transfers | Number of Permits Involved in Transfers | Change in Residency Due to Transfers | Permits with State Liens | Number of Non-mon. Transfers | Number of Monetary Transfers | Average Price Paid For Permits | Number of Financed Monetary Transfers | |
| Southeastern | 1995 | 469 | 335 | 43 | 41 | +5 | 130 | 10 | 33 | 70,803 | 15 | |
| | 1996 | 471 | 331 | 41 | 39 | -1 | 142 | 11 | 30 | 59,417 | 18 | |
| | 1997 | 471 | 334 | 44 | 41 | +7 | 143 | 12 | 32 | 50,625 | 11 | |
| Prince Wm Sound | 1975 | 494 | 366 | 36 | 33 | +1 | 0 | 4 | 9 | 3,089 | 6 | |
| | 1976 | 514 | 390 | 70 | 64 | +3 | 0 | 10 | 18 | 4,500 | 15 | |
| | 1977 | 524 | 393 | 83 | 71 | -2 | 0 | 8 | 30 | 13,750 | 20 | |
| | 1978 | 528 | 384 | 84 | 69 | -4 | 1 | 8 | 25 | 27,742 | 19 | |
| | 1979 | 531 | 384 | 68 | 62 | +1 | 4 | 11 | 22 | 35,632 | 13 | |
| | 1980 | 531 | 391 | 54 | 51 | +3 | 16 | 19 | 26 | 27,288 | 17 | |
| | 1981 | 531 | 398 | 74 | 73 | +8 | 55 | 20 | 54 | 32,204 | 30 | |
| | 1982 | 531 | 384 | 78 | 72 | -10 | 73 | 27 | 51 | 46,461 | 32 | |
| | 1983 | 533 | 396 | 54 | 53 | +1 | 104 | 17 | 37 | 61,450 | 24 | |
| | 1984 | 534 | 393 | 57 | 52 | -6 | 128 | 22 | 35 | 53,157 | 18 | |
| | 1985 | 534 | 385 | 70 | 66 | -6 | 138 | 17 | 53 | 55,679 | 25 | |
| | 1986 | 536 | 384 | 57 | 53 | -1 | 144 | 11 | 46 | 62,006 | 23 | |
| | 1987 | 536 | 386 | 57 | 55 | +5 | 154 | 12 | 45 | 62,147 | 21 | |
| | 1988 | 536 | 386 | 68 | 60 | +11 | 158 | 18 | 50 | 75,802 | 17 | |
| | 1989 | 537 | 392 | 29 | 28 | 0 | 158 | 14 | 15 | 137,833 | 8 | |
| | 1990 | 537 | 391 | 41 | 39 | 0 | 155 | 14 | 27 | 160,523 | 11 | |
| | 1991 | 537 | 394 | 41 | 39 | +2 | 158 | 17 | 24 | 122,250 | 6 | |
| | 1992 | 537 | 404 | 40 | 40 | +2 | 158 | 14 | 26 | 95,212 | 3 | |
| | 1993 | 537 | 402 | 21 | 20 | -4 | 159 | 7 | 14 | 99,286 | 7 | |
| | 1994 | 537 | 400 | 28 | 26 | -1 | 161 | 6 | 21 | 67,155 | 5 | |
| | 1995 | 537 | 395 | 43 | 43 | +1 | 169 | 9 | 34 | 67,397 | 11 | |
| | 1996 | 536 | 391 | 38 | 36 | -1 | 169 | 8 | 30 | 57,360 | 16 | |
| | 1997 | 537 | 392 | 25 | 25 | +3 | 175 | 2 | 23 | 67,861 | 11 | |
| | Cook Inlet | 1975 | 453 | 291 | 30 | 30 | +3 | 0 | 3 | 10 | 3,911 | 3 |
| | | 1976 | 514 | 342 | 76 | 73 | +2 | 0 | 9 | 29 | 5,552 | 12 |
| | | 1977 | 539 | 359 | 87 | 79 | -4 | 0 | 13 | 28 | 9,643 | 14 |
| | | 1978 | 549 | 365 | 87 | 82 | 0 | 0 | 20 | 21 | 36,825 | 15 |
| 1979 | | 554 | 371 | 86 | 75 | +3 | 6 | 13 | 24 | 82,636 | 18 | |
| 1980 | | 554 | 373 | 76 | 72 | +2 | 42 | 36 | 34 | 67,290 | 28 | |
| 1981 | | 554 | 375 | 76 | 73 | +1 | 82 | 27 | 47 | 67,213 | 39 | |
| 1982 | | 554 | 382 | 64 | 61 | +4 | 97 | 27 | 37 | 57,866 | 27 | |
| 1983 | | 555 | 390 | 72 | 69 | +4 | 123 | 21 | 51 | 69,720 | 39 | |
| 1984 | | 556 | 399 | 48 | 48 | +2 | 139 | 13 | 35 | 66,306 | 20 | |
| 1985 | | 557 | 394 | 62 | 58 | -1 | 156 | 23 | 39 | 62,759 | 22 | |
| 1986 | 559 | 394 | 71 | 68 | 0 | 165 | 21 | 50 | 63,902 | 27 | | |
| 1987 | 560 | 399 | 44 | 42 | +4 | 168 | 18 | 26 | 86,542 | 11 | | |

Table 1. Permit and Permit Transfer Statistics, 1975-1997 *

| Fishery and Area | Year | Actual Transfer Information | | | | | Transfer Survey Information | | | | | |
|------------------|------------------|-----------------------------|------------------------------------|---------------------------|---|--------------------------------------|-----------------------------|------------------------------|------------------------------|--------------------------------|---------------------------------------|----|
| | | Total Permanent Permits | Permanent Permits Held by Alaskans | Total Number of Transfers | Number of Permits Involved in Transfers | Change in Residency Due to Transfers | Permits with State Liens | Number of Non-mon. Transfers | Number of Monetary Transfers | Average Price Paid For Permits | Number of Financed Monetary Transfers | |
| Cook Inlet | 1988 | 561 | 403 | 35 | 33 | +4 | 174 | 7 | 28 | 126,138 | 11 | |
| | 1989 | 561 | 399 | 53 | 53 | -2 | 169 | 18 | 35 | 168,400 | 14 | |
| | 1990 | 561 | 394 | 54 | 51 | -1 | 169 | 30 | 24 | 203,063 | 6 | |
| | 1991 | 562 | 396 | 43 | 41 | +3 | 166 | 15 | 28 | 177,214 | 7 | |
| | 1992 | 562 | 388 | 45 | 44 | -4 | 157 | 13 | 32 | 88,816 | 9 | |
| | 1993 | 563 | 382 | 38 | 36 | -3 | 137 | 17 | 21 | 89,786 | 5 | |
| | 1994 | 564 | 380 | 39 | 37 | 0 | 136 | 14 | 25 | 64,993 | 8 | |
| | 1995 | 564 | 379 | 57 | 57 | +2 | 145 | 25 | 32 | 84,186 | 11 | |
| | 1996 | 565 | 380 | 53 | 52 | -3 | 148 | 23 | 30 | 75,957 | 13 | |
| | 1997 | 566 | 380 | 55 | 55 | +1 | 150 | 21 | 34 | 75,074 | 14 | |
| | Alaska Peninsula | 1975 | 152 | 109 | 4 | 4 | 0 | 0 | 1 | 0 | — | 0 |
| | | 1976 | 153 | 110 | 17 | 17 | 0 | 0 | 1 | 4 | 6,333 | 1 |
| | | 1977 | 154 | 108 | 31 | 26 | -1 | 0 | 7 | 7 | 10,286 | 5 |
| | | 1978 | 156 | 109 | 27 | 25 | -5 | 0 | 6 | 5 | 15,000 | 3 |
| | | 1979 | 156 | 107 | 32 | 26 | -1 | 0 | 7 | 4 | 60,625 | 3 |
| | | 1980 | 156 | 103 | 28 | 25 | -4 | 12 | 16 | 8 | 95,875 | 5 |
| | | 1981 | 156 | 101 | 23 | 23 | -3 | 15 | 13 | 10 | 123,500 | 7 |
| | | 1982 | 156 | 98 | 25 | 24 | -2 | 19 | 12 | 13 | 119,000 | 8 |
| | | 1983 | 156 | 96 | 26 | 23 | -1 | 19 | 17 | 9 | 145,778 | 5 |
| | | 1984 | 156 | 96 | 15 | 15 | -1 | 24 | 8 | 7 | 186,429 | 5 |
| | | 1985 | 156 | 92 | 24 | 22 | -3 | 32 | 9 | 15 | 159,153 | 11 |
| | | 1986 | 157 | 94 | 22 | 22 | +1 | 38 | 9 | 13 | 197,000 | 7 |
| | | 1987 | 158 | 93 | 9 | 9 | 0 | 40 | 2 | 7 | 215,429 | 4 |
| | | 1988 | 158 | 90 | 7 | 7 | -3 | 39 | 5 | 2 | *** | 1 |
| | | 1989 | 158 | 87 | 13 | 13 | -2 | 39 | 8 | 5 | 344,000 | 2 |
| | | 1990 | 158 | 87 | 15 | 14 | +1 | 45 | 4 | 11 | 356,136 | 4 |
| | | 1991 | 159 | 89 | 7 | 7 | +1 | 48 | 1 | 6 | 357,000 | 3 |
| 1992 | | 159 | 89 | 11 | 11 | 0 | 44 | 4 | 7 | 319,286 | 5 | |
| 1993 | | 159 | 90 | 13 | 13 | +2 | 46 | 4 | 9 | 389,932 | 5 | |
| 1994 | | 159 | 91 | 8 | 8 | +1 | 45 | 4 | 4 | 329,750 | 1 | |
| 1995 | | 159 | 88 | 11 | 11 | -1 | 47 | 5 | 6 | 305,167 | 4 | |
| 1996 | | 159 | 86 | 13 | 12 | -2 | 48 | 4 | 9 | 287,222 | 4 | |
| 1997 | | 160 | 85 | 5 | 5 | -2 | 48 | 2 | 3 | *** | 1 | |
| Bristol Bay | | 1975 | 1,416 | 767 | 81 | 80 | +9 | 0 | 16 | 19 | 1,166 | 9 |
| | | 1976 | 1,622 | 918 | 126 | 124 | 0 | 0 | 34 | 30 | 2,536 | 10 |
| | | 1977 | 1,663 | 947 | 213 | 196 | -11 | 0 | 47 | 63 | 6,180 | 40 |
| | | 1978 | 1,700 | 973 | 235 | 211 | -12 | 1 | 49 | 78 | 21,638 | 52 |
| | 1979 | 1,717 | 971 | 225 | 197 | -14 | 8 | 44 | 51 | 64,588 | 37 | |

Table 1. Permit and Permit Transfer Statistics, 1975-1997 *

| Fishery and Area | Year | Actual Transfer Information | | | | Transfer Survey Information | | | | | |
|------------------|------------------------|-----------------------------|---------------------------|---|--------------------------------------|-----------------------------|------------------------------|------------------------------|--------------------------------|---------------------------------------|---|
| | | Total Permanent Permits | Total Number of Transfers | Number of Permits Involved in Transfers | Change in Residency Due to Transfers | Permits with State Liens | Number of Non-mon. Transfers | Number of Monetary Transfers | Average Price Paid For Permits | Number of Financed Monetary Transfers | |
| Bristol Bay | 1980 | 1,717 | 169 | 162 | 0 | 87 | 68 | 79 | 88,108 | 58 | |
| | 1981 | 1,720 | 168 | 161 | -3 | 141 | 77 | 89 | 82,107 | 59 | |
| | 1982 | 1,724 | 183 | 179 | -13 | 191 | 71 | 112 | 94,383 | 76 | |
| | 1983 | 1,727 | 160 | 155 | +15 | 284 | 63 | 97 | 99,072 | 78 | |
| | 1984 | 1,729 | 153 | 146 | -17 | 356 | 65 | 88 | 117,036 | 52 | |
| | 1985 | 1,738 | 138 | 130 | 0 | 393 | 49 | 89 | 114,647 | 41 | |
| | 1986 | 1,743 | 155 | 144 | +1 | 411 | 57 | 97 | 121,120 | 54 | |
| | 1987 | 1,746 | 129 | 125 | -10 | 418 | 51 | 78 | 130,265 | 40 | |
| | 1988 | 1,749 | 126 | 121 | -12 | 422 | 49 | 77 | 167,461 | 32 | |
| | 1989 | 1,776 | 116 | 112 | +2 | 439 | 63 | 53 | 233,400 | 26 | |
| | 1990 | 1,785 | 107 | 103 | -3 | 435 | 47 | 60 | 212,855 | 20 | |
| | 1991 | 1,793 | 102 | 97 | -18 | 408 | 41 | 61 | 201,173 | 7 | |
| | 1992 | 1,797 | 128 | 126 | -23 | 385 | 61 | 67 | 187,201 | 15 | |
| | 1993 | 1,805 | 116 | 112 | -3 | 364 | 48 | 68 | 187,248 | 25 | |
| | 1994 | 1,810 | 134 | 127 | -9 | 350 | 55 | 79 | 161,909 | 25 | |
| | 1995 | 1,813 | 144 | 135 | -2 | 357 | 56 | 87 | 190,870 | 34 | |
| | 1996 | 1,821 | 117 | 114 | +3 | 361 | 51 | 66 | 171,564 | 26 | |
| | 1997 | 1,832 | 106 | 104 | -9 | 368 | 40 | 66 | 154,134 | 26 | |
| | Salmon Set Net Yakutat | 1975 | 147 | 9 | 8 | +2 | 0 | 1 | 3 | *** | 2 |
| | | 1976 | 156 | 15 | 15 | +1 | 0 | 8 | 4 | 6,000 | 2 |
| 1977 | | 158 | 16 | 15 | -1 | 0 | 2 | 5 | 7,000 | 1 | |
| 1978 | | 161 | 22 | 20 | -1 | 0 | 4 | 5 | 10,480 | 2 | |
| 1979 | | 164 | 13 | 12 | -3 | 0 | 3 | 3 | *** | 1 | |
| 1980 | | 164 | 16 | 15 | 0 | 2 | 9 | 2 | *** | 1 | |
| 1981 | | 164 | 23 | 20 | 0 | 6 | 11 | 11 | 26,682 | 6 | |
| 1982 | | 164 | 15 | 14 | -1 | 12 | 7 | 8 | 32,792 | 5 | |
| 1983 | | 164 | 18 | 17 | -1 | 13 | 14 | 4 | 27,250 | 2 | |
| 1984 | | 164 | 13 | 13 | +1 | 11 | 9 | 4 | 23,750 | 2 | |
| 1985 | | 164 | 18 | 17 | +1 | 15 | 9 | 9 | 25,862 | 7 | |
| 1986 | | 164 | 17 | 16 | 0 | 17 | 10 | 7 | 26,857 | 2 | |
| 1987 | | 164 | 17 | 16 | -2 | 14 | 12 | 5 | 27,200 | 0 | |
| 1988 | | 164 | 27 | 27 | -3 | 17 | 10 | 17 | 28,279 | 7 | |
| 1989 | | 165 | 18 | 18 | -1 | 17 | 13 | 5 | 33,200 | 2 | |
| 1990 | | 165 | 22 | 22 | +1 | 19 | 10 | 12 | 36,458 | 2 | |
| 1991 | | 167 | 20 | 19 | +2 | 20 | 12 | 8 | 44,125 | 2 | |
| 1992 | | 168 | 13 | 12 | -1 | 19 | 10 | 3 | *** | 0 | |
| 1993 | | 169 | 18 | 17 | -1 | 18 | 8 | 10 | 46,850 | 2 | |

Table 1. Permit and Permit Transfer Statistics, 1975-1997 *

| Fishery and Area | Year | Actual Transfer Information | | | | Transfer Survey Information | | | | | |
|------------------|------|-----------------------------|------------------------------------|---------------------------|---|--------------------------------------|--------------------------|------------------------------|------------------------------|--------------------------------|---------------------------------------|
| | | Total Permanent Permits | Permanent Permits Held by Alaskans | Total Number of Transfers | Number of Permits Involved in Transfers | Change in Residency Due to Transfers | Permits with State Liens | Number of Non-mon. Transfers | Number of Monetary Transfers | Average Price Paid For Permits | Number of Financed Monetary Transfers |
| Yakutat | 1994 | 169 | 136 | 14 | 13 | -4 | 15 | 9 | 5 | 36,500 | 0 |
| | 1995 | 169 | 135 | 18 | 18 | -1 | 18 | 13 | 5 | 49,600 | 3 |
| | 1996 | 169 | 135 | 17 | 16 | 0 | 19 | 9 | 8 | 43,375 | 4 |
| | 1997 | 168 | 135 | 14 | 14 | 0 | 23 | 9 | 5 | 34,900 | 4 |
| | 1975 | 26 | 21 | 2 | 2 | +2 | 0 | 0 | 0 | — | 0 |
| | 1976 | 28 | 23 | 0 | 0 | 0 | 0 | 0 | 0 | — | 0 |
| | 1977 | 28 | 21 | 2 | 2 | -1 | 0 | 0 | 0 | — | 0 |
| | 1978 | 28 | 21 | 5 | 4 | +1 | 0 | 0 | 2 | *** | 1 |
| | 1979 | 28 | 23 | 2 | 2 | 0 | 0 | 0 | 1 | *** | 1 |
| | 1980 | 28 | 24 | 3 | 3 | +1 | 0 | 3 | 0 | — | 0 |
| 1981 | 29 | 24 | 2 | 2 | 0 | 1 | 0 | 2 | *** | 1 | |
| 1982 | 30 | 27 | 5 | 5 | +2 | 2 | 0 | 5 | 19,400 | 5 | |
| 1983 | 30 | 28 | 9 | 8 | +1 | 2 | 3 | 6 | 24,167 | 5 | |
| 1984 | 30 | 28 | 6 | 6 | 0 | 3 | 2 | 4 | 31,250 | 1 | |
| 1985 | 30 | 28 | 5 | 5 | 0 | 6 | 1 | 4 | 32,375 | 2 | |
| 1986 | 30 | 28 | 1 | 1 | 0 | 7 | 0 | 1 | *** | 1 | |
| 1987 | 30 | 27 | 6 | 5 | -1 | 7 | 2 | 4 | 29,625 | 0 | |
| 1988 | 30 | 27 | 6 | 6 | +1 | 5 | 4 | 2 | *** | 1 | |
| 1989 | 30 | 27 | 4 | 4 | 0 | 4 | 3 | 1 | *** | 0 | |
| 1990 | 30 | 28 | 1 | 1 | +1 | 4 | 0 | 1 | *** | 0 | |
| 1991 | 30 | 27 | 2 | 2 | -1 | 5 | 1 | 1 | *** | 0 | |
| 1992 | 30 | 27 | 3 | 3 | 0 | 5 | 2 | 1 | *** | 1 | |
| 1993 | 30 | 27 | 0 | 0 | 0 | 5 | 0 | 0 | — | 0 | |
| 1994 | 30 | 28 | 2 | 2 | +1 | 6 | 0 | 2 | *** | 1 | |
| 1995 | 30 | 28 | 4 | 4 | 0 | 8 | 1 | 3 | *** | 2 | |
| 1996 | 30 | 27 | 2 | 2 | -1 | 7 | 0 | 2 | *** | 1 | |
| 1997 | 30 | 26 | 1 | 1 | -1 | 7 | 0 | 1 | *** | 0 | |
| Cook Inlet | 1975 | 652 | 608 | 47 | 46 | 0 | 0 | 7 | 9 | 2,250 | 6 |
| | 1976 | 712 | 670 | 77 | 74 | +9 | 0 | 14 | 14 | 1,778 | 7 |
| | 1977 | 731 | 690 | 93 | 90 | +3 | 0 | 12 | 29 | 4,821 | 15 |
| | 1978 | 742 | 698 | 129 | 120 | +1 | 0 | 23 | 46 | 9,824 | 15 |
| | 1979 | 744 | 701 | 99 | 92 | -6 | 0 | 24 | 20 | 23,412 | 9 |
| | 1980 | 744 | 696 | 89 | 87 | +2 | 5 | 42 | 42 | 15,333 | 25 |
| | 1981 | 744 | 684 | 110 | 103 | -7 | 18 | 50 | 59 | 15,322 | 31 |
| | 1982 | 744 | 692 | 90 | 86 | -2 | 28 | 48 | 42 | 17,190 | 21 |
| | 1983 | 743 | 682 | 103 | 101 | -1 | 34 | 52 | 51 | 18,340 | 19 |
| | 1984 | 743 | 669 | 89 | 86 | -1 | 41 | 44 | 45 | 17,078 | 15 |

Table 1. Permit and Permit Transfer Statistics, 1975-1997 *

| Fishery and Area | Year | Actual Transfer Information | | | | Transfer Survey Information | | | | | | |
|------------------|--------|-----------------------------|------------------------------------|---------------------------|---|--------------------------------------|--------------------------|------------------------------|------------------------------|--------------------------------|---------------------------------------|---|
| | | Total Permanent Permits | Permanent Permits Held by Alaskans | Total Number of Transfers | Number of Permits Involved in Transfers | Change in Residency Due to Transfers | Permits with State Liens | Number of Non-mon. Transfers | Number of Monetary Transfers | Average Price Paid For Permits | Number of Financed Monetary Transfers | |
| Cook Inlet | 1985 | 744 | 669 | 92 | 90 | -7 | 44 | 41 | 51 | 16,312 | 10 | |
| | 1986 | 743 | 664 | 102 | 97 | -2 | 46 | 42 | 60 | 18,310 | 10 | |
| | 1987 | 743 | 659 | 101 | 98 | -3 | 48 | 33 | 68 | 26,727 | 14 | |
| | 1988 | 743 | 659 | 79 | 77 | -1 | 48 | 33 | 46 | 41,151 | 4 | |
| | 1989 | 743 | 644 | 91 | 87 | -9 | 54 | 42 | 49 | 57,694 | 11 | |
| | 1990 | 743 | 643 | 83 | 80 | -3 | 68 | 41 | 42 | 91,171 | 8 | |
| | 1991 | 745 | 642 | 63 | 63 | -3 | 71 | 43 | 20 | 65,875 | 5 | |
| | 1992 | 745 | 637 | 79 | 77 | +5 | 71 | 54 | 25 | 40,793 | 7 | |
| | 1993 | 745 | 634 | 72 | 70 | -5 | 72 | 39 | 33 | 36,478 | 5 | |
| | 1994 | 745 | 629 | 53 | 52 | +3 | 70 | 34 | 19 | 28,263 | 3 | |
| | 1995 | 745 | 623 | 53 | 53 | -2 | 78 | 30 | 23 | 30,283 | 3 | |
| | 1996 | 745 | 622 | 52 | 52 | 0 | 79 | 36 | 16 | 33,563 | 7 | |
| | 1997 | 745 | 622 | 70 | 64 | +1 | 80 | 39 | 31 | 25,173 | 10 | |
| | Kodiak | 1975 | 139 | 103 | 22 | 22 | +8 | 0 | 7 | 7 | 5,380 | 5 |
| | | 1976 | 176 | 133 | 37 | 34 | -2 | 0 | 4 | 10 | 3,900 | 2 |
| | | 1977 | 181 | 137 | 28 | 26 | +1 | 0 | 5 | 7 | 6,600 | 4 |
| | | 1978 | 184 | 138 | 28 | 25 | +2 | 0 | 9 | 6 | 19,800 | 4 |
| 1979 | | 185 | 137 | 32 | 27 | 0 | 1 | 4 | 10 | 33,667 | 6 | |
| 1980 | | 186 | 137 | 34 | 33 | +1 | 6 | 16 | 9 | 39,861 | 5 | |
| 1981 | | 186 | 140 | 25 | 25 | +1 | 18 | 15 | 9 | 41,278 | 7 | |
| 1982 | | 186 | 138 | 28 | 28 | -3 | 21 | 16 | 12 | 39,817 | 7 | |
| 1983 | | 186 | 139 | 19 | 18 | +1 | 23 | 13 | 6 | 57,033 | 5 | |
| 1984 | | 187 | 141 | 24 | 23 | +1 | 30 | 13 | 11 | 57,200 | 5 | |
| 1985 | | 187 | 146 | 22 | 22 | +2 | 34 | 15 | 7 | 56,357 | 3 | |
| 1986 | | 187 | 150 | 38 | 36 | +3 | 32 | 19 | 19 | 61,792 | 8 | |
| 1987 | | 187 | 152 | 25 | 25 | +3 | 29 | 17 | 8 | 60,122 | 3 | |
| 1988 | | 187 | 150 | 15 | 14 | +1 | 30 | 12 | 3 | *** | 1 | |
| 1989 | | 188 | 144 | 15 | 14 | -1 | 29 | 9 | 6 | 69,542 | 2 | |
| 1990 | | 188 | 143 | 16 | 16 | +1 | 27 | 10 | 6 | 85,000 | 2 | |
| 1991 | | 188 | 138 | 21 | 19 | -1 | 27 | 18 | 3 | *** | 2 | |
| 1992 | 188 | 139 | 27 | 25 | +3 | 31 | 18 | 9 | 109,722 | 3 | | |
| 1993 | 188 | 140 | 14 | 13 | 0 | 30 | 6 | 8 | 111,938 | 1 | | |
| 1994 | 188 | 135 | 20 | 20 | -2 | 29 | 15 | 5 | 98,040 | 3 | | |
| 1995 | 188 | 137 | 14 | 14 | +2 | 26 | 10 | 4 | 92,625 | 2 | | |
| 1996 | 188 | 134 | 21 | 19 | 0 | 23 | 14 | 7 | 75,961 | 3 | | |
| 1997 | 188 | 133 | 25 | 24 | 0 | 25 | 19 | 6 | 107,500 | 1 | | |

Table 1. Permit and Permit Transfer Statistics, 1975-1997 *

| Fishery and Area | Year | Actual Transfer Information | | | | Transfer Survey Information | | | | | |
|------------------|-------|-----------------------------|------------------------------------|---------------------------|---|--------------------------------------|--------------------------|------------------------------|------------------------------|--------------------------------|---------------------------------------|
| | | Total Permanent Permits | Permanent Permits Held by Alaskans | Total Number of Transfers | Number of Permits Involved in Transfers | Change in Residency Due to Transfers | Permits with State Liens | Number of Non-mon. Transfers | Number of Monetary Transfers | Average Price Paid For Permits | Number of Financed Monetary Transfers |
| Alaska Peninsula | 1975 | 82 | 76 | 4 | 3 | 0 | 0 | 2 | 0 | — | 0 |
| | 1976 | 105 | 98 | 5 | 5 | 0 | 0 | 2 | 3 | *** | 1 |
| | 1977 | 106 | 95 | 15 | 14 | -1 | 0 | 1 | 4 | 5,150 | 1 |
| | 1978 | 108 | 99 | 14 | 13 | 0 | 0 | 3 | 2 | *** | 0 |
| | 1979 | 108 | 99 | 12 | 11 | 0 | 0 | 2 | 0 | — | 0 |
| | 1980 | 109 | 98 | 17 | 14 | -2 | 1 | 7 | 5 | 14,500 | 3 |
| | 1981 | 109 | 98 | 21 | 21 | 0 | 3 | 12 | 9 | 54,278 | 7 |
| | 1982 | 109 | 96 | 19 | 19 | -1 | 5 | 8 | 11 | 54,636 | 6 |
| | 1983 | 109 | 96 | 24 | 24 | 0 | 5 | 13 | 11 | 50,836 | 3 |
| | 1984 | 109 | 95 | 18 | 18 | -1 | 7 | 9 | 9 | 45,332 | 2 |
| | 1985 | 110 | 94 | 14 | 14 | -2 | 11 | 7 | 7 | 47,500 | 2 |
| | 1986 | 113 | 92 | 11 | 10 | -4 | 13 | 4 | 7 | 56,357 | 4 |
| | 1987 | 113 | 90 | 23 | 22 | -2 | 16 | 14 | 9 | 55,722 | 5 |
| | 1988 | 113 | 94 | 13 | 12 | +2 | 20 | 8 | 3 | *** | 2 |
| | 1989 | 113 | 94 | 9 | 9 | 0 | 19 | 9 | 1 | *** | 0 |
| | 1990 | 113 | 93 | 6 | 6 | -1 | 21 | 3 | 3 | *** | 0 |
| | 1991 | 113 | 91 | 8 | 8 | -1 | 24 | 5 | 3 | *** | 1 |
| | 1992 | 113 | 93 | 11 | 11 | +1 | 27 | 4 | 7 | 101,429 | 2 |
| | 1993 | 113 | 94 | 15 | 13 | +2 | 26 | 6 | 9 | 129,444 | 2 |
| | 1994 | 113 | 91 | 15 | 15 | 0 | 28 | 12 | 3 | *** | 1 |
| | 1995 | 113 | 90 | 17 | 17 | +1 | 33 | 6 | 11 | 117,500 | 2 |
| | 1996 | 113 | 89 | 11 | 11 | +1 | 34 | 8 | 3 | *** | 1 |
| | 1997 | 113 | 88 | 18 | 17 | -1 | 38 | 8 | 10 | 107,470 | 4 |
| Bristol Bay | 1975 | 716 | 592 | 22 | 22 | +2 | 0 | 9 | 0 | — | 0 |
| | 1976 | 759 | 621 | 68 | 65 | -3 | 0 | 23 | 11 | 2,755 | 6 |
| | 1977 | 824 | 669 | 76 | 74 | -6 | 0 | 21 | 19 | 2,695 | 4 |
| | 1978 | 891 | 733 | 133 | 125 | +4 | 0 | 39 | 27 | 8,507 | 9 |
| | 1979 | 910 | 745 | 133 | 125 | -6 | 1 | 32 | 38 | 18,184 | 16 |
| | 1980 | 913 | 728 | 113 | 111 | -11 | 11 | 49 | 49 | 30,689 | 20 |
| | 1981 | 914 | 714 | 112 | 106 | -17 | 30 | 55 | 56 | 32,370 | 27 |
| | 1982 | 916 | 704 | 118 | 115 | -13 | 46 | 47 | 71 | 37,359 | 42 |
| | 1983 | 929 | 710 | 97 | 94 | -4 | 64 | 48 | 49 | 41,680 | 27 |
| | 1984 | 931 | 711 | 90 | 87 | -8 | 64 | 43 | 47 | 40,766 | 22 |
| | 1985 | 931 | 713 | 98 | 96 | 0 | 76 | 50 | 48 | 35,974 | 22 |
| | 1986 | 940 | 718 | 97 | 92 | +5 | 87 | 36 | 61 | 33,300 | 18 |
| | 1987 | 942 | 722 | 108 | 101 | +1 | 90 | 44 | 64 | 34,453 | 20 |
| 1988 | 941 | 715 | 97 | 93 | -2 | 88 | 50 | 47 | 46,508 | 16 | |
| 1989 | 1,007 | 770 | 95 | 92 | -6 | 88 | 55 | 39 | 63,731 | 11 | |

Table 1. Permit and Permit Transfer Statistics, 1975-1997 *

| Fishery and Area | Year | Actual Transfer Information | | | | Transfer Survey Information | | | | | | |
|--|---|-----------------------------|------------------------------------|---------------------------|---|--------------------------------------|--------------------------|------------------------------|------------------------------|--------------------------------|---------------------------------------|----|
| | | Total Permanent Permits | Permanent Permits Held by Alaskans | Total Number of Transfers | Number of Permits Involved in Transfers | Change in Residency Due to Transfers | Permits with State Liens | Number of Non-mon. Transfers | Number of Monetary Transfers | Average Price Paid For Permits | Number of Financed Monetary Transfers | |
| Bristol Bay | 1990 | 1,011 | 770 | 85 | 81 | +2 | 95 | 52 | 33 | 60,545 | 8 | |
| | 1991 | 1,012 | 763 | 83 | 78 | -1 | 103 | 44 | 39 | 58,321 | 5 | |
| | 1992 | 1,017 | 766 | 92 | 86 | -2 | 103 | 45 | 47 | 48,904 | 5 | |
| | 1993 | 1,014 | 754 | 71 | 70 | -6 | 97 | 40 | 31 | 48,016 | 7 | |
| | 1994 | 1,012 | 753 | 81 | 79 | -2 | 95 | 51 | 30 | 35,767 | 6 | |
| | 1995 | 1,011 | 754 | 87 | 85 | -1 | 98 | 51 | 36 | 41,797 | 15 | |
| | 1996 | 1,011 | 754 | 108 | 105 | -3 | 102 | 58 | 49 | 41,253 | 15 | |
| | 1997 | 1,012 | 751 | 78 | 78 | +3 | 111 | 45 | 33 | 38,985 | 10 | |
| | Salmon Power Troll Southeastern | 1975 | 849 | 619 | 137 | 130 | +23 | 0 | 11 | 52 | 5,303 | 27 |
| | | 1976 | 915 | 677 | 78 | 76 | +2 | 0 | 14 | 29 | 5,065 | 18 |
| 1977 | | 929 | 698 | 159 | 147 | +15 | 0 | 11 | 64 | 8,831 | 25 | |
| 1978 | | 934 | 717 | 143 | 127 | +13 | 3 | 13 | 78 | 15,457 | 39 | |
| 1979 | | 939 | 718 | 126 | 108 | -3 | 26 | 13 | 61 | 26,680 | 39 | |
| 1980 | | 939 | 703 | 97 | 94 | -11 | 76 | 14 | 72 | 33,308 | 41 | |
| 1981 | | 939 | 712 | 95 | 92 | +7 | 127 | 23 | 68 | 29,012 | 47 | |
| 1982 | | 940 | 717 | 86 | 83 | -3 | 153 | 15 | 71 | 21,630 | 44 | |
| 1983 | | 939 | 721 | 95 | 94 | 0 | 167 | 22 | 73 | 20,864 | 40 | |
| 1984 | | 940 | 720 | 83 | 81 | -9 | 188 | 12 | 71 | 19,456 | 34 | |
| 1985 | | 942 | 728 | 83 | 82 | +1 | 211 | 10 | 73 | 21,509 | 40 | |
| 1986 | | 942 | 728 | 88 | 85 | +2 | 228 | 16 | 72 | 24,776 | 38 | |
| 1987 | | 942 | 748 | 75 | 72 | +15 | 239 | 10 | 65 | 26,431 | 28 | |
| 1988 | | 942 | 755 | 83 | 80 | +13 | 259 | 15 | 68 | 29,782 | 37 | |
| 1989 | | 942 | 756 | 63 | 61 | +13 | 265 | 7 | 56 | 32,446 | 23 | |
| 1990 | | 942 | 753 | 65 | 61 | 0 | 266 | 14 | 51 | 33,142 | 17 | |
| 1991 | | 944 | 746 | 71 | 69 | -7 | 251 | 15 | 56 | 36,299 | 5 | |
| 1992 | | 944 | 749 | 57 | 54 | -3 | 236 | 13 | 44 | 33,847 | 10 | |
| 1993 | | 944 | 749 | 54 | 53 | 0 | 244 | 7 | 47 | 30,747 | 17 | |
| 1994 | 945 | 746 | 56 | 55 | -6 | 232 | 12 | 44 | 28,268 | 18 | | |
| 1995 | 945 | 747 | 82 | 80 | +1 | 234 | 11 | 71 | 28,323 | 27 | | |
| 1996 | 960 | 748 | 46 | 46 | -1 | 216 | 11 | 35 | 19,800 | 8 | | |
| 1997 | 965 | 759 | 66 | 65 | +10 | 215 | 12 | 54 | 18,104 | 18 | | |
| Salmon Hand Troll Southeastern | 1982 | 696 | 659 | 56 | 53 | -2 | 0 | 24 | 32 | 4,036 | 4 | |
| | 1983 | 2,121 | 1,970 | 100 | 98 | -5 | 8 | 16 | 84 | 4,964 | 16 | |
| | 1984 | 2,120 | 1,951 | 75 | 73 | -11 | 12 | 7 | 68 | 4,732 | 11 | |
| | 1985 | 1,984 | 1,834 | 110 | 105 | -9 | 17 | 21 | 89 | 5,109 | 7 | |

Table 1. Permit and Permit Transfer Statistics, 1975-1997 *

| Fishery and Area | Year | Actual Transfer Information | | | | Transfer Survey Information | | | | | | |
|------------------|---------------------------------|-----------------------------|------------------------------------|---------------------------|---|--------------------------------------|--------------------------|------------------------------|------------------------------|--------------------------------|---------------------------------------|---|
| | | Total Permanent Permits | Permanent Permits Held by Alaskans | Total Number of Transfers | Number of Permits Involved in Transfers | Change in Residency Due to Transfers | Permits with State Liens | Number of Non-mon. Transfers | Number of Monetary Transfers | Average Price Paid For Permits | Number of Financed Monetary Transfers | |
| Southeastern | 1986 | 1,957 | 1,804 | 124 | 120 | - 4 | 18 | 16 | 108 | 5,252 | 5 | |
| | 1987 | 1,919 | 1,756 | 109 | 106 | - 7 | 16 | 16 | 93 | 5,551 | 8 | |
| | 1988 | 1,856 | 1,679 | 122 | 121 | -10 | 20 | 25 | 97 | 6,446 | 7 | |
| | 1989 | 1,807 | 1,630 | 79 | 76 | 0 | 19 | 13 | 66 | 7,323 | 7 | |
| | 1990 | 1,767 | 1,592 | 116 | 108 | - 4 | 20 | 18 | 98 | 8,322 | 10 | |
| | 1991 | 1,727 | 1,557 | 106 | 101 | + 3 | 17 | 24 | 82 | 8,321 | 5 | |
| | 1992 | 1,682 | 1,503 | 85 | 81 | -10 | 14 | 15 | 70 | 8,477 | 4 | |
| | 1993 | 1,627 | 1,463 | 75 | 71 | 0 | 15 | 22 | 53 | 8,853 | 11 | |
| | 1994 | 1,576 | 1,407 | 77 | 75 | - 7 | 16 | 14 | 63 | 7,362 | 9 | |
| | 1995 | 1,536 | 1,367 | 96 | 92 | - 8 | 22 | 17 | 79 | 7,415 | 9 | |
| | 1996 | 1,498 | 1,334 | 61 | 59 | + 2 | 25 | 19 | 42 | 5,868 | 3 | |
| | 1997 | 1,457 | 1,307 | 77 | 75 | + 8 | 28 | 18 | 59 | 5,579 | 9 | |
| | Salmon Fishwheel Upper Yukon | 1976 | 80 | 80 | 2 | 2 | 0 | 0 | 0 | 0 | — | 0 |
| | | 1977 | 107 | 107 | 2 | 2 | 0 | 0 | 0 | 0 | — | 0 |
| | | 1978 | 108 | 107 | 11 | 10 | 0 | 0 | 0 | 0 | — | 0 |
| | | 1979 | 114 | 114 | 6 | 6 | 0 | 0 | 1 | 3 | *** | 1 |
| | | 1980 | 114 | 114 | 9 | 9 | 0 | 0 | 4 | 5 | 9,320 | 2 |
| | | 1981 | 123 | 123 | 16 | 16 | 0 | 0 | 2 | 14 | 10,893 | 3 |
| | | 1982 | 130 | 130 | 12 | 12 | 0 | 0 | 4 | 8 | 10,500 | 2 |
| 1983 | | 130 | 129 | 19 | 19 | - 1 | 2 | 12 | 7 | 11,643 | 4 | |
| 1984 | | 130 | 129 | 10 | 10 | 0 | 4 | 4 | 6 | 12,333 | 0 | |
| 1985 | | 132 | 132 | 9 | 8 | + 1 | 4 | 6 | 3 | *** | 0 | |
| 1986 | | 133 | 132 | 8 | 8 | 0 | 4 | 6 | 2 | *** | 0 | |
| 1987 | | 133 | 133 | 13 | 13 | + 1 | 2 | 4 | 9 | 9,089 | 0 | |
| 1988 | | 133 | 133 | 12 | 11 | 0 | 2 | 7 | 5 | 8,700 | 0 | |
| 1989 | | 133 | 133 | 7 | 7 | 0 | 2 | 4 | 3 | *** | 0 | |
| 1990 | | 133 | 132 | 11 | 11 | 0 | 2 | 5 | 6 | 11,667 | 1 | |
| 1991 | | 133 | 132 | 12 | 12 | 0 | 2 | 5 | 7 | 10,843 | 0 | |
| 1992 | | 162 | 159 | 12 | 12 | 0 | 2 | 7 | 5 | 10,900 | 0 | |
| 1993 | | 164 | 160 | 14 | 13 | - 1 | 1 | 11 | 3 | *** | 0 | |
| 1994 | | 164 | 160 | 8 | 8 | 0 | 1 | 5 | 3 | *** | 0 | |
| 1995 | | 164 | 160 | 13 | 12 | 0 | 1 | 12 | 1 | *** | 0 | |
| 1996 | 163 | 158 | 14 | 13 | 0 | 2 | 9 | 5 | 8,700 | 1 | | |
| 1997 | 161 | 157 | 7 | 7 | 0 | 1 | 5 | 2 | *** | 0 | | |

Table 1. Permit and Permit Transfer Statistics, 1975-1997 *

| Fishery and Area | Year | Actual Transfer Information | | | | Transfer Survey Information | | | | | |
|---|------|-----------------------------|------------------------------------|---------------------------|---|--------------------------------------|--------------------------|------------------------------|------------------------------|--------------------------------|---------------------------------------|
| | | Total Permanent Permits | Permanent Permits Held by Alaskans | Total Number of Transfers | Number of Permits Involved in Transfers | Change in Residency Due to Transfers | Permits with State Liens | Number of Non-mon. Transfers | Number of Monetary Transfers | Average Price Paid For Permits | Number of Financed Monetary Transfers |
| AYK Salmon Gill Net Upper Yukon | 1976 | 35 | 35 | 1 | 1 | 0 | 0 | 0 | 0 | — | 0 |
| | 1977 | 44 | 44 | 1 | 1 | 0 | 0 | 0 | 1 | *** | 0 |
| | 1978 | 47 | 46 | 2 | 2 | 0 | 0 | 0 | 0 | — | 0 |
| | 1979 | 49 | 48 | 5 | 5 | 0 | 0 | 1 | 2 | *** | 1 |
| | 1980 | 48 | 47 | 6 | 5 | 0 | 0 | 6 | 0 | — | 0 |
| | 1981 | 64 | 64 | 8 | 8 | 0 | 0 | 5 | 3 | *** | 0 |
| | 1982 | 72 | 71 | 9 | 8 | 0 | 0 | 3 | 6 | 8,367 | 0 |
| | 1983 | 72 | 70 | 10 | 9 | -1 | 0 | 5 | 5 | 10,600 | 0 |
| | 1984 | 70 | 69 | 4 | 4 | 0 | 0 | 3 | 1 | *** | 1 |
| | 1985 | 70 | 69 | 2 | 2 | 0 | 0 | 0 | 2 | *** | 0 |
| | 1986 | 70 | 69 | 6 | 6 | 0 | 0 | 3 | 3 | *** | 0 |
| | 1987 | 71 | 70 | 7 | 7 | 0 | 0 | 5 | 2 | *** | 1 |
| | 1988 | 70 | 68 | 5 | 5 | 0 | 0 | 2 | 3 | *** | 0 |
| | 1989 | 69 | 67 | 4 | 4 | 0 | 1 | 0 | 4 | 9,875 | 1 |
| | 1990 | 70 | 68 | 4 | 4 | 0 | 2 | 0 | 4 | 11,250 | 1 |
| | 1991 | 71 | 69 | 3 | 3 | 0 | 2 | 2 | 1 | *** | 0 |
| | 1992 | 71 | 69 | 2 | 2 | 0 | 2 | 2 | 0 | — | 0 |
| | 1993 | 72 | 69 | 4 | 4 | 0 | 1 | 3 | 1 | *** | 0 |
| | 1994 | 72 | 69 | 4 | 4 | 0 | 1 | 4 | 0 | — | 0 |
| | 1995 | 73 | 70 | 2 | 2 | 0 | 0 | 2 | 0 | — | 0 |
| 1996 | 72 | 71 | 4 | 3 | 0 | 0 | 3 | 1 | *** | 1 | |
| 1997 | 72 | 71 | 4 | 4 | 0 | 0 | 4 | 0 | — | 0 | |
| Kuskokwim | 1976 | 688 | 688 | 8 | 8 | 0 | 0 | 3 | 0 | — | 0 |
| | 1977 | 761 | 761 | 18 | 18 | 0 | 0 | 11 | 0 | — | 0 |
| | 1978 | 766 | 765 | 50 | 47 | 0 | 0 | 26 | 6 | 6,100 | 2 |
| | 1979 | 781 | 780 | 39 | 37 | +1 | 1 | 17 | 10 | 6,420 | 4 |
| | 1980 | 782 | 782 | 59 | 56 | 0 | 3 | 33 | 16 | 6,875 | 5 |
| | 1981 | 785 | 784 | 49 | 47 | -1 | 4 | 34 | 14 | 8,339 | 3 |
| | 1982 | 831 | 829 | 44 | 44 | -1 | 4 | 36 | 8 | 9,563 | 3 |
| | 1983 | 831 | 828 | 64 | 63 | 0 | 4 | 55 | 9 | 10,222 | 2 |
| | 1984 | 831 | 829 | 52 | 52 | 0 | 9 | 37 | 15 | 9,893 | 7 |
| | 1985 | 831 | 829 | 45 | 43 | 0 | 13 | 39 | 6 | 10,083 | 1 |
| | 1986 | 829 | 828 | 43 | 42 | +1 | 16 | 28 | 15 | 10,133 | 4 |
| | 1987 | 829 | 827 | 42 | 40 | 0 | 15 | 34 | 8 | 9,563 | 0 |
| | 1988 | 828 | 825 | 45 | 43 | -1 | 19 | 27 | 18 | 9,669 | 4 |
| | 1989 | 828 | 825 | 55 | 54 | 0 | 20 | 35 | 20 | 12,050 | 0 |
| 1990 | 829 | 827 | 57 | 56 | +1 | 22 | 39 | 18 | 12,056 | 2 | |

Table 1. Permit and Permit Transfer Statistics, 1975-1997 *

| Fishery and Area | Year | Actual Transfer Information | | | | Transfer Survey Information | | | | | | |
|------------------|----------|-----------------------------|------------------------------------|---------------------------|---|--------------------------------------|--------------------------|------------------------------|------------------------------|--------------------------------|---------------------------------------|---|
| | | Total Permanent Permits | Permanent Permits Held by Alaskans | Total Number of Transfers | Number of Permits Involved in Transfers | Change in Residency Due to Transfers | Permits with State Liens | Number of Non-mon. Transfers | Number of Monetary Transfers | Average Price Paid For Permits | Number of Financed Monetary Transfers | |
| Kuskokwim | 1991 | 830 | 828 | 39 | 39 | 0 | 19 | 27 | 12 | 13,417 | 1 | |
| | 1992 | 830 | 827 | 48 | 48 | 0 | 19 | 33 | 15 | 12,333 | 4 | |
| | 1993 | 829 | 825 | 61 | 60 | -1 | 15 | 44 | 17 | 12,735 | 4 | |
| | 1994 | 830 | 826 | 44 | 43 | 0 | 11 | 39 | 5 | 12,500 | 1 | |
| | 1995 | 830 | 825 | 52 | 52 | -1 | 15 | 37 | 15 | 11,967 | 4 | |
| | 1996 | 828 | 822 | 32 | 31 | 0 | 15 | 29 | 3 | *** | 0 | |
| | 1997 | 827 | 821 | 45 | 45 | 0 | 13 | 39 | 6 | 9,683 | 3 | |
| | Kotzebue | 1976 | 118 | 118 | 4 | 4 | 0 | 0 | 2 | 0 | — | 0 |
| | | 1977 | 175 | 175 | 2 | 2 | 0 | 0 | 0 | 0 | — | 0 |
| | | 1978 | 177 | 177 | 17 | 17 | 0 | 0 | 5 | 1 | *** | 1 |
| | | 1979 | 180 | 180 | 18 | 18 | 0 | 0 | 3 | 8 | 5,200 | 2 |
| | | 1980 | 194 | 193 | 12 | 11 | 0 | 0 | 8 | 3 | *** | 1 |
| | | 1981 | 211 | 208 | 18 | 18 | -1 | 0 | 10 | 8 | 7,813 | 0 |
| | | 1982 | 219 | 216 | 25 | 23 | -1 | 2 | 14 | 11 | 9,591 | 3 |
| | | 1983 | 219 | 216 | 17 | 17 | -1 | 5 | 5 | 12 | 13,083 | 4 |
| | | 1984 | 219 | 216 | 20 | 19 | 0 | 5 | 18 | 2 | *** | 1 |
| | | 1985 | 219 | 215 | 13 | 13 | 0 | 11 | 10 | 3 | *** | 1 |
| 1986 | | 219 | 214 | 17 | 17 | -1 | 15 | 11 | 6 | 10,819 | 1 | |
| 1987 | | 219 | 211 | 15 | 15 | 0 | 16 | 11 | 4 | 9,500 | 1 | |
| 1988 | | 219 | 213 | 33 | 30 | +2 | 13 | 21 | 11 | 7,505 | 0 | |
| 1989 | | 219 | 213 | 14 | 14 | 0 | 10 | 11 | 3 | *** | 0 | |
| 1990 | | 218 | 211 | 17 | 17 | 0 | 8 | 9 | 8 | 8,250 | 2 | |
| 1991 | | 217 | 211 | 12 | 12 | +1 | 6 | 11 | 1 | *** | 1 | |
| 1992 | | 217 | 211 | 12 | 12 | 0 | 5 | 8 | 4 | 10,500 | 1 | |
| 1993 | | 214 | 206 | 11 | 11 | 0 | 5 | 9 | 2 | *** | 0 | |
| 1994 | | 215 | 207 | 11 | 11 | -1 | 5 | 10 | 1 | *** | 0 | |
| 1995 | | 215 | 208 | 9 | 9 | +1 | 4 | 6 | 3 | *** | 0 | |
| 1996 | 214 | 208 | 6 | 6 | 0 | 3 | 5 | 1 | *** | 0 | | |
| 1997 | 211 | 206 | 4 | 4 | 0 | 1 | 4 | 0 | — | 0 | | |
| Lower Yukon | 1976 | 678 | 677 | 6 | 5 | 0 | 0 | 4 | 0 | — | 0 | |
| | 1977 | 692 | 691 | 9 | 9 | 0 | 0 | 3 | 2 | *** | 0 | |
| | 1978 | 695 | 691 | 26 | 25 | -1 | 0 | 14 | 5 | 6,700 | 3 | |
| | 1979 | 702 | 698 | 28 | 27 | 0 | 0 | 12 | 8 | 5,834 | 1 | |
| | 1980 | 703 | 700 | 45 | 44 | 0 | 1 | 29 | 9 | 9,289 | 2 | |
| | 1981 | 706 | 703 | 36 | 35 | 0 | 1 | 24 | 11 | 9,545 | 3 | |
| | 1982 | 707 | 703 | 40 | 38 | 0 | 2 | 28 | 12 | 18,250 | 5 | |
| | 1983 | 703 | 698 | 74 | 71 | -1 | 4 | 48 | 26 | 22,346 | 5 | |

Table 1. Permit and Permit Transfer Statistics, 1975-1997 *

| Fishery and Area | Year | Actual Transfer Information | | | | Transfer Survey Information | | | | | | |
|------------------|--------------|-----------------------------|------------------------------------|---------------------------|---|--------------------------------------|--------------------------|------------------------------|------------------------------|--------------------------------|---------------------------------------|---|
| | | Total Permanent Permits | Permanent Permits Held by Alaskans | Total Number of Transfers | Number of Permits Involved in Transfers | Change in Residency Due to Transfers | Permits with State Liens | Number of Non-mon. Transfers | Number of Monetary Transfers | Average Price Paid For Permits | Number of Financed Monetary Transfers | |
| Lower Yukon | 1984 | 704 | 699 | 41 | 41 | 0 | 10 | 24 | 17 | 28,441 | 8 | |
| | 1985 | 704 | 700 | 38 | 35 | 0 | 11 | 26 | 12 | 22,917 | 1 | |
| | 1986 | 703 | 696 | 36 | 36 | -1 | 16 | 25 | 11 | 22,455 | 3 | |
| | 1987 | 703 | 698 | 50 | 49 | +2 | 16 | 38 | 12 | 20,688 | 2 | |
| | 1988 | 704 | 697 | 37 | 35 | 0 | 19 | 24 | 13 | 20,669 | 3 | |
| | 1989 | 704 | 696 | 43 | 43 | 0 | 27 | 32 | 11 | 25,527 | 5 | |
| | 1990 | 704 | 694 | 28 | 28 | -2 | 34 | 19 | 9 | 24,778 | 3 | |
| | 1991 | 704 | 696 | 43 | 41 | +2 | 36 | 31 | 12 | 23,904 | 0 | |
| | 1992 | 704 | 692 | 39 | 38 | -2 | 37 | 29 | 10 | 27,680 | 1 | |
| | 1993 | 704 | 692 | 38 | 35 | 0 | 36 | 30 | 8 | 31,359 | 2 | |
| | 1994 | 703 | 694 | 27 | 27 | -1 | 31 | 20 | 7 | 24,543 | 1 | |
| | 1995 | 703 | 694 | 38 | 36 | 0 | 43 | 27 | 10 | 23,000 | 4 | |
| | 1996 | 703 | 693 | 39 | 38 | -1 | 61 | 28 | 11 | 19,500 | 1 | |
| | 1997 | 701 | 693 | 30 | 30 | 0 | 76 | 21 | 9 | 17,489 | 3 | |
| | Norton Sound | 1976 | 169 | 169 | 0 | 0 | 0 | 0 | 0 | 0 | — | 0 |
| | | 1977 | 176 | 174 | 2 | 2 | -1 | 0 | 0 | 0 | — | 0 |
| | | 1978 | 176 | 176 | 8 | 8 | 0 | 1 | 1 | 4 | 4,350 | 3 |
| | | 1979 | 177 | 175 | 11 | 11 | -2 | 1 | 2 | 5 | 6,300 | 1 |
| | | 1980 | 177 | 175 | 18 | 18 | 0 | 2 | 6 | 11 | 7,909 | 3 |
| | | 1981 | 195 | 194 | 17 | 16 | 0 | 3 | 7 | 10 | 9,450 | 4 |
| 1982 | | 200 | 199 | 20 | 19 | 0 | 4 | 10 | 10 | 10,100 | 2 | |
| 1983 | | 201 | 199 | 22 | 20 | -1 | 8 | 15 | 7 | 11,429 | 2 | |
| 1984 | | 201 | 199 | 17 | 16 | 0 | 13 | 12 | 5 | 13,150 | 3 | |
| 202 | | 200 | 200 | 13 | 13 | 0 | 13 | 7 | 6 | 12,167 | 2 | |
| 1986 | | 201 | 198 | 22 | 20 | -1 | 14 | 16 | 6 | 10,167 | 3 | |
| 1987 | | 201 | 199 | 15 | 15 | 0 | 14 | 11 | 4 | 9,750 | 1 | |
| 1988 | | 201 | 199 | 11 | 10 | 0 | 11 | 8 | 3 | *** | 0 | |
| 1989 | | 201 | 198 | 14 | 13 | -1 | 10 | 7 | 7 | 9,214 | 1 | |
| 200 | | 200 | 197 | 7 | 7 | 0 | 9 | 5 | 2 | *** | 0 | |
| 1991 | | 200 | 198 | 16 | 16 | 0 | 8 | 11 | 5 | 8,100 | 0 | |
| 200 | | 200 | 198 | 8 | 8 | 0 | 7 | 6 | 2 | *** | 0 | |
| 1993 | | 198 | 196 | 13 | 13 | 0 | 7 | 11 | 2 | *** | 0 | |
| 1994 | | 198 | 196 | 13 | 13 | 0 | 4 | 9 | 4 | 7,775 | 2 | |
| 1995 | | 196 | 194 | 15 | 14 | +1 | 3 | 10 | 5 | 6,820 | 1 | |
| 1996 | 196 | 194 | 12 | 12 | -1 | 2 | 10 | 2 | *** | 1 | | |
| 1997 | 196 | 194 | 10 | 10 | +1 | 3 | 6 | 4 | 5,175 | 1 | | |

Table 1. Permit and Permit Transfer Statistics, 1975-1997 *

| Fishery and Area | Year | Actual Transfer Information | | | | Transfer Survey Information | | | | | |
|------------------|------|-----------------------------|------------------------------------|---------------------------|---|--------------------------------------|--------------------------|------------------------------|------------------------------|--------------------------------|---------------------------------------|
| | | Total Permanent Permits | Permanent Permits Held by Alaskans | Total Number of Transfers | Number of Permits Involved in Transfers | Change in Residency Due to Transfers | Permits with State Liens | Number of Non-mon. Transfers | Number of Monetary Transfers | Average Price Paid For Permits | Number of Financed Monetary Transfers |
| | 1975 | 6,762 | 4,808 | 590 | 568 | +58 | 0 | 83 | 167 | 5,694 | 102 |
| | 1976 | 9,173 | 7,115 | 776 | 729 | +6 | 0 | 152 | 199 | 5,455 | 99 |
| | 1977 | 9,772 | 7,638 | 1,108 | 1,019 | -11 | 0 | 181 | 341 | 10,013 | 178 |
| | 1978 | 9,975 | 7,800 | 1,314 | 1,185 | -8 | 6 | 260 | 385 | 20,541 | 220 |
| | 1979 | 10,104 | 7,865 | 1,209 | 1,071 | -45 | 70 | 216 | 342 | 38,491 | 195 |
| | 1980 | 10,132 | 7,852 | 1,060 | 1,017 | -17 | 375 | 441 | 480 | 45,191 | 281 |
| | 1981 | 10,204 | 7,901 | 1,092 | 1,047 | -16 | 710 | 475 | 602 | 44,288 | 361 |
| | 1982 | 11,030 | 8,647 | 1,144 | 1,100 | -57 | 922 | 490 | 654 | 48,033 | 397 |
| | 1983 | 12,488 | 10,017 | 1,211 | 1,169 | -9 | 1,195 | 536 | 675 | 48,573 | 371 |
| | 1984 | 12,531 | 9,992 | 1,053 | 1,016 | -74 | 1,423 | 444 | 609 | 49,800 | 279 |
| | 1985 | 12,507 | 9,973 | 1,111 | 1,060 | -26 | 1,612 | 422 | 689 | 46,800 | 271 |
| | 1986 | 12,509 | 9,952 | 1,191 | 1,129 | +6 | 1,738 | 440 | 750 | 48,986 | 282 |
| | 1987 | 12,486 | 9,912 | 1,120 | 1,069 | +5 | 1,792 | 422 | 698 | 50,769 | 242 |
| | 1988 | 12,578 | 9,900 | 1,125 | 1,066 | -22 | 1,857 | 428 | 695 | 61,858 | 210 |
| | 1989 | 12,654 | 9,904 | 914 | 888 | -3 | 1,910 | 406 | 506 | 86,268 | 163 |
| | 1990 | 13,019 | 10,176 | 950 | 912 | -15 | 1,955 | 401 | 549 | 89,160 | 128 |
| | 1991 | 13,061 | 10,178 | 929 | 893 | -9 | 1,928 | 399 | 530 | 84,581 | 83 |
| | 1992 | 13,419 | 10,480 | 950 | 919 | -25 | 1,897 | 419 | 530 | 76,045 | 107 |
| | 1993 | 13,423 | 10,466 | 856 | 827 | -2 | 1,860 | 417 | 439 | 79,736 | 129 |
| | 1994 | 13,404 | 10,412 | 908 | 879 | -18 | 1,804 | 425 | 482 | 62,855 | 129 |
| | 1995 | 13,357 | 10,348 | 1,010 | 978 | 0 | 1,912 | 411 | 597 | 70,715 | 190 |
| | 1996 | 13,347 | 10,274 | 941 | 900 | -27 | 1,955 | 411 | 529 | 64,285 | 171 |
| | 1997 | 13,639 | 10,544 | 961 | 935 | +43 | 2,057 | 387 | 574 | 55,879 | 196 |

NOTES FOR TABLE:

Total Permanent Permits — The number of permanent permits may decrease from one year to the next because of revocations.

Permanent Permits Held by Alaskans — Residency figures were calculated using the permit holder address from 1975-1978. After 1978 permit holders were required to declare their residency status on the renewal form and residency figures were taken from those declarations. These numbers may differ somewhat from those reported in “Changes in the Distribution of Alaska’s Commercial Fisheries Entry Permits” published by CFEC. In that report all persons who declared Alaska residency status but had out-of-state addresses are counted as non-residents. Numbers shown in this annual report may differ from those in previous annual reports due to residency status changes resulting from residency investigations. Permits held by the Dept. of Commerce or CFAB are counted as resident permits.

Total Number of Transfers — Transfers reported here include foreclosures by the Dept. of Commerce or by CFAB.

Change in Residency Due to Transfers — These figures may differ from figures reported in previous annual reports due to retroactive residency status changes.

Permits with State Liens — These are permits which have been financed by the Dept. of Commerce or by CFAB or which have been used as collateral against a commercial fishing loan from one of these agencies. These numbers differ from those shown in past CFEC Annual Reports due to permit file corrections and changes in the accounting of foreclosed permits. These figures represent permits which have had at least one outstanding lien sometime during the year and which were held by year permit holders.

Transfer Survey Information — These surveys were voluntary until January 1, 1980. Many transfers occurred without completion of a survey form during the years 1975-1979. A few surveys are missing for 1980 and 1981. In addition, there have been ten administratively ordered transfers in the 1986-1994 period for which no surveys exist.

Non-monetary/Monetary Transfers — For the years 1980-1994 any transfer survey with a sale price greater than \$500 was counted as a monetary transfer. All other transfers were counted as non-monetary transfers. For the years 1975-1979 the number of monetary transfers reported here is the number of transfer surveys which were used to compute the average price of permits for use by the Dept. of Commerce and CFAB in their loan programs. These surveys were selected using exclusionary criteria different from the \$500 minimum.

Average Price Paid for Permits — These figures are the average of the sale price taken from all surveys counted as monetary transfers. For the years 1980-1994 they may vary slightly from the average prices used by the Dept. of Commerce and CFAB which are based on exclusionary criteria different from the \$500 minimum used in this report. A “—” indicates that there were no monetary transfers for this fishery. A “****” indicates confidential information because fewer than four surveys exist.

TABLE 2

Loans Approved by the Department of Commerce and Economic Development for the Purchase of Entry Permits Summed by Election District over the 1997 Time Period.*

| House Election District | No. of Permits | Amount |
|--|----------------|--------------------|
| 01 Greater Ketchikan | 3 | \$113,700 |
| 02 Petersburg/Wrangell/Sitka | 27 | \$1,286,198 |
| 03-04 Juneau Borough | 10 | \$397,680 |
| 05 Rural Southeast/Yakutat | 13 | \$294,780 |
| 06 Kodiak/E Alaska Penn | 6 | \$726,960 |
| 07 Homer/Lower Cook Inlet | 15 | \$1,400,056 |
| 08 Soldotna/Seward/Sterling Hwy | 4 | \$82,000 |
| 09 Kenai/Nikiski/Hope | 1 | \$54,000 |
| 10-25 Anchorage | 2 | \$106,600 |
| 26 Wasilla | 2 | \$249,920 |
| 27 Palmer/Matsu | 2 | \$153,520 |
| 35 Cordova/Whittier/Delta Junction | 13 | \$775,480 |
| 36 Rural Yukon/Upper Kuskokwim | 1 | \$60,000 |
| 38 Nome/Wade Hampton/Nunivak | 6 | \$106,100 |
| 40 Alaska Peninsula/Aleutian Isles | 2 | \$88,880 |
| Totals | 107 | \$5,895,874 |

*Based on the election districts defined in November, 1994 general elections.

TABLE 3

Loans Approved by the Department of Commerce and Economic Development for the Purchase of Entry Permits by Calendar Year 1972-1997.

| Calendar Year | Permit Only | | Vessel/Gear | | Total | |
|------------------------|--------------|----------------------|-------------|---------------------|--------------|----------------------|
| | No. | Amount | No. | Amount | No. | Amount |
| 1997 | 107 | \$5,895,874 | 0 | \$0 | 107 | \$5,895,874 |
| 1996 | 94 | \$5,995,47 | 0 | \$0 | 94 | \$5,995,469 |
| 1995 | 113 | \$9,303,475 | 0 | \$0 | 113 | \$9,303,475 |
| 1994 | 91 | \$6,302,410 | 9 | \$243,600 | 91 | \$6,546,010 |
| 1993 | 99 | \$8,427,769 | 4 | \$103,000 | 99 | \$8,530,769 |
| 1992 | 89 | \$6,936,220 | 5 | \$162,645 | 89 | \$7,098,865 |
| 1991 | 77 | \$8,295,089 | 0 | \$0 | 77 | \$8,295,089 |
| 1990 | 99 | \$11,471,444 | 7 | \$502,823 | 106 | \$11,974,267 |
| 1989 | 106 | \$10,836,615 | 2 | \$171,463 | 108 | \$11,008,078 |
| 1988 | 133 | \$9,454,150 | 11 | \$959,421 | 144 | \$10,413,571 |
| 1987 | 123 | \$7,680,632 | 6 | \$489,710 | 129 | \$8,170,342 |
| 1986 | 161 | \$10,153,268 | 10 | \$702,337 | 171 | \$10,855,605 |
| 1985 | 159 | \$9,682,703 | 22 | \$1,509,168 | 181 | \$11,191,871 |
| 1984 | 155 | \$9,366,311 | 7 | \$471,050 | 162 | \$9,837,361 |
| 1983 | 147 | \$7,697,720 | 7 | \$411,465 | 154 | \$8,109,185 |
| 1982 | 194 | \$9,300,897 | 2 | \$134,473 | 196 | \$9,435,370 |
| 1981 | 223 | \$10,222,651 | 13 | \$946,591 | 236 | \$11,169,242 |
| 1980 | 93 | \$4,145,533 | 26 | \$1,939,951 | 119 | \$6,085,484 |
| 1972-79 | 82 | \$3,083,775 | 63 | \$4,706,533 | 145 | \$7,790,308 |
| Total 1972-1979 | 2,345 | \$154,252,005 | 194 | \$13,454,230 | 2,521 | \$167,706,235 |

TABLE 4

Loans Approved by the Department of Commerce and Economic Development for the Purchase of Entry Permits, Summed by Election District over the 1994-1997 Time Period. *

| House Election District | Permit Only | | Vessel/Gear | | Total | |
|------------------------------------|-------------|---------------------|-------------|------------------|------------|---------------------|
| | No. | Amount | No. | Amount | No. | Amount |
| 01 Greater Ketchikan | 14 | \$664,760 | 0 | \$0 | 14 | \$664,760 |
| 02 Petersburg/Wrangell/Sitka | 82 | \$5,113,638 | 3 | \$72,000 | 82 | \$5,185,638 |
| 03-04 Juneau Borough | 38 | \$1,793,890 | 0 | \$0 | 38 | \$1,793,890 |
| 05 Rural Southeast/Yakutat | 45 | \$1,651,028 | 2 | \$61,500 | 45 | \$1,712,528 |
| 06 Kodiak/E Alaska Penn | 31 | \$2,406,975 | 0 | \$0 | 31 | \$2,406,975 |
| 07 Homer/Lower Cook Inlet | 62 | \$6,296,106 | 2 | \$59,600 | 62 | \$6,355,706 |
| 08 Soldotna/Seward/Sterling Hwy | 18 | \$1,512,900 | 0 | \$0 | 18 | \$1,512,900 |
| 09 Kenai/Nikiski/Hope | 12 | \$858,330 | 0 | \$0 | 12 | \$858,330 |
| 10-25 Anchorage | 14 | \$1,078,960 | 0 | \$0 | 14 | \$1,078,960 |
| 26 Wasilla | 7 | \$698,560 | 0 | \$0 | 7 | \$698,560 |
| 27 Palmer/Matsu | 6 | \$546,920 | 0 | \$0 | 5 | \$546,920 |
| 28 Susitna/Talkeetna/Willow | 1 | \$48,000 | 1 | \$22,000 | 1 | \$70,000 |
| 29-34 Fairbanks | 2 | \$164,800 | 0 | \$0 | 2 | \$164,800 |
| 35 Cordova/Whittier/Delta Junc | 30 | \$1,976,120 | 0 | \$0 | 30 | \$1,976,120 |
| 36 Rural Yukon/Upper Kuskokwim | 7 | \$425,691 | 0 | \$0 | 7 | \$425,691 |
| 38 E Nome/Wade Hampton/Nunivak | 12 | \$228,940 | 0 | \$0 | 12 | \$228,940 |
| 39 Bethel/Dillingham | 7 | \$591,340 | 0 | \$0 | 7 | \$591,340 |
| 40 Alaska Peninsula/Aleutian Isles | 17 | \$1,440,270 | 1 | \$28,500 | 17 | \$1,468,770 |
| Totals | 405 | \$27,497,228 | 9 | \$243,600 | 404 | \$27,740,828 |

*Based on the election districts defined in November, 1994 general elections.